

GOVERNMENT OF MIZORAM

INFORMATION MANUAL - 2017

Under Sec.4(1)(b) of RIGHT TO INFORMATION ACT, 2005



सत्यमेव जयते

**DEPARTMENT OF
FOOD, CIVIL SUPPLIES AND CONSUMER AFFAIRS**

CONTENTS

Part – I

Organisation, functions and duties	1
Introduction	1
1. Organisation set up	1
1A The Department	1
1B Directorate	1
1C District Offices	2
1D Sub-Divisional Offices	2
1E Functions and duties	2
1F Lists of (i) Public Distribution Centres	3
(ii) Sub-Distribution Centres	3
(iii) Supply Centres	3
(iv) Supply Centre in District-wise	4
1G Staff Position	5
1H Organisation & Hierarchical Chart	6

Part – II

The powers and duties of Officers and Staff	7
2A Directorate	7-18
2B District Offices	19-38

Part – III

Procedures followed in the decision making	39
--	-------	----

Part – IV

The norms set for the discharge of the function	40
---	-------	----

Part – V

Documents held by the Department	40
----------------------------------	-------	----

Part – VI

Boards, Committees and Bodies	41-42
-------------------------------	-------	-------

Part – VII

Directory	A. Directorate	43-45
	B. District Offices	46-62

Part – VIII

Monthly remuneration	1. Directorate	63-68
	2. District Offices	69-102

Part – IX

Budget Allocation	103
-------------------	-------	-----

Part – X

Name of Information Officers	104
------------------------------	-------	-----

PART – I

ORGANISATION, FUNCTIONS AND DUTIES

Item (i) of Section 4 Sub-section 1 (b) of the Right to Information Act, 2005.

(No. 22 of 2005)

INTRODUCTION : After attaining Union Territory in 21st January, 1972, Mizoram was placed under direct control of Home Ministry, Govt. of India, the Union Territory Govt. of Mizoram has formulated the business of the Government by establishing various departments. As such, in April 1972, the Government established Supply and Transport Department to facilitate equitable distribution of essential commodities to the public and, movement of passengers and goods within the Union Territory as well as inter-State movements.

In 20th February, 1987, Mizoram became full-fledged State and in 20th December, 1988 the Department was bi-furcated into Civil Supplies Department and Transport Department. Thereafter, the subject of Food was allocated to Civil Supplies Department and re-named, Food & Civil Supplies Department.

For prompt and effective implementation of the 'Consumer Protection' Act, 1986, as amended and rules made under it from time to time, the Government considered that it is imperative to place all matters pertaining to 'Consumer Affairs' in consonance with the instructions of the Government of India from time to time. Accordingly, the subject of 'Consumer Affairs' with its related rules, acts and regulations was allocated to the department on 17th November, 2004, re-naming the department as 'Food, Civil Supplies and Consumer Affairs'.

1. ORGANISATION SET UP

The administrative head of the department is Secretary to the Govt. of Mizoram, who was assisted by Jt. Secretary, Dy. Secretary, Under Secretary, Superintendent and a number of Clerical Staffs and Peons.

The Director is the executive head of the department who was assisted by a number of subordinate officers and staff.

1.A. THE DEPARTMENT : The department is one of the most important departments under the Govt. of Mizoram. It deals with the daily necessities of the public having 1125 sanctioned posts of different categories. It has 3 (three) major wings such as (i) General Supply Wing (ii) Administrative Wing and (iii) Accounts Wing at Directorate with 9 (nine) District Offices, and 1 (one) Sub-Divisional Offices with 9 (nine) Principal Distribution Centres, 18 (eighteen) Sub-Distribution Centres and 89 (eighty nine) Supply Centres at different places in the State.

1.B. Directorate : The Department headquarters is located in the heart of Aizawl City near Head Post Office, Aizawl having 5 storeyed building.

There are 15 (fifteen) posts of Group 'A' Officers as under :

- (1) Director : The Director post is an IAS Cadre Post.
- (2) Addl. Director : The Addl. Director is Departmental officer.
- (3) Jt. Directors : There are 2(two) posts of Jt. Directors, out of which 1 post is held by the departmental officers and another 1 (one) post is manned by MCS (JAG).
- (4) Dy. Directors : There are five (5) posts of Dy. Directors as under :
 - (i) Dy. Director – 2 nos. : Departmental Officers
 - (ii) Dy. Director (Admn) – 1 no : MSS (III)
 - (iii) Dy. Director (Acct) – 1no : MF&AS
 - (iv) Dy. Director (G) – 1 no : MCS (Sr. Gr.)
- (5) Asst. Directors / ADCSO – 6 nos.
- (6) Superintendent – 2 nos. : MSS (IV)
- (7) SDFCSO&CA – 6 nos.

There are different Branches under the directorate as under :

(i) General Establishment Branch: - This Branch is functioning under the close supervision of Superintendent, dealing with the service matters and its administration of all posts.

Under this branch there are other 4 (four) sections as under

- (a) Plan & Works Section
- (b) Vehicle Section
- (c) Cash Section
- (d) Inspecting Section

(ii) Account Branch: This branch is functioning under the close supervision of Accounts Officer.

Under this branch, there are 3 (three) sections as under:

- (a) Compilation Section
- (b) Procurement Section
- (c) Accounts & Audit Section

(iii) General Supply Branch: This branch is also functioning under the close supervision of Superintendent dealing with monitoring of distribution of food stuffs all over the state and consumer affairs:-

1.C. District Offices : There are nine (9) District Offices such as :-

- (i) DCSO 'W' Aizawl
- (ii) DCSO 'E' Aizawl
- (iii) DCSO Saiha
- (iv) DCSO Champhai
- (v) DCSO Lunglei
- (vi) DCSO Lawngtlai
- (vii) DCSO Mamit
- (viii) DCSO Kolasib
- (ix) DCSO Serchhip

1.D. Sub-Divisional Offices : There is 1 (one) Sub-Divisional Office viz.
SDF & CSO Tlabung

1.E. Function and duties : Under the Government of Mizoram (AOB) Rules 2014, as amended from time to time, the department has been allocated the following subjects :

- (i) Food and Civil Supplies
- (ii) Essential Commodities Act
- (iii) Price Control and Rationing
- (iv) Inter-State Movement permits of foodstuff
- (v) Supply Advisory Boards
- (vi) Warehouse
- (vii) Control, distribution and regulation of LPG
- (viii) Control, distribution and regulation of POL and its product
- (ix) Control, distribution and regulation of essential commodities
- (x) Consumer Affairs – Consumer Protection including Mizoram State Consumer Disputes Redressal and District Forum.
- (xi) Legal Metrology.

1.F. List of PDC, SDC & SC

For equitable distribution of essential commodities to the public, there are 9 PDC, 18 SDCs and 88 Scs :

(i) Public Distribution Centres :-

- | | | |
|-------------|---------------|-----------------------|
| (i) Aibawk | (2) Zawlnuam | (3) Kolasib |
| (4) Saitual | (5) Kawlkulh | (6) Champhai |
| (7) Lunglei | (8) Lawngtlai | (9) Aizawl (Zuangtui) |

(ii) Sub-Distribution Centres :-

- | | | |
|--------------------|-------------------|---------------|
| (1) Lungdai | (2) Vairengte | (3) Vaseikai |
| (4) Serchhip | (5) N. Vanlaiphai | (6) Thenzawl |
| (7) Phullen | (8) Sakawrdai | (9) Tuipang |
| (10) Khawlzawl | (11) Ngopa | (12) Sangau |
| (13) Tlabung | (14) Hnahthial | (15) Thenhlum |
| (16) Bungtlang 'S' | (17) Saiha | (18) Kawlchaw |

(iii) Supply Centres :-

- | | | |
|--------------------|--------------------|-----------------------|
| (1) Reiek | (2) Kawrthah | (3) Mamit |
| (4) Kawnpui | (5) Kawrtethawveng | (6) Rengdil |
| (7) Phuldungsei | (8) Bairabi | (9) Phaileng 'W' |
| (10) Kanhmun | (11) Saiphai | (12) Hmuifang |
| (13) Darlung | (14) Pukzing | (15) Khawrihnim |
| (16) Tuidam | (17) Tuipuibari | (18) N. Hlimen |
| (19) Kanghmun | (20) Sialsuk | (21) Bukpui |
| (22) Darlawn | (23) Chhingchhip | (24) E. Lungdar |
| (25) Phuaibuang | (26) Khawlailung | (27) Vanbawng |
| (28) Khawruhlian | (29) Zohmun | (30) Suangpuilawn |
| (31) N. Vervek | (32) Ratu | (33) Khawlian |
| (34) Hnahlan | (35) Biате | (36) Teikhang |
| (37) Bungzung | (38) Kawlbem | (39) Vaphai |
| (40) Khuangleng | (41) Rabung | (42) Lungpuk |
| (43) Khawbung | (44) Khawhai | (45) Lungpho |
| (46) Sialhawk | (47) Farkawn | (48) N.E. Khawdungsei |
| (49) Kelkang | (50) Lungsen | (51) Tuichawng |
| (52) Bungmun | (53) Borapansury | (54) Haulawng |
| (55) Buarpui | (56) Thingsai | (57) Chawngte |
| (58) S. Vanlaiphai | (59) Tawipui 'S' | (60) Mualthum 'N' |
| (61) Chhipphir | (62) Cherhlun | (63) Tarphe |
| (64) Putlungasih | (65) Diltlang | (66) Tuithumhnar |
| (67) Vathuampui | (68) Damdep | (69) Bualpui NG |
| (70) Chhualung | (71) Serkawr | (72) Chapui |
| (73) Niawhtlang | (74) Siata | (75) Tongkolong |
| (76) Laki | (77) Vawmbuk | (78) Chakhang |
| (79) Vahai | (80) Phura | (81) Zawngling |
| (82) Tuisih | (83) Lungpher | (84) Lungtian |
| (85) Dungtlang | (86) Hliappui | (87) phalhrang |
| (88) Marpara | | |

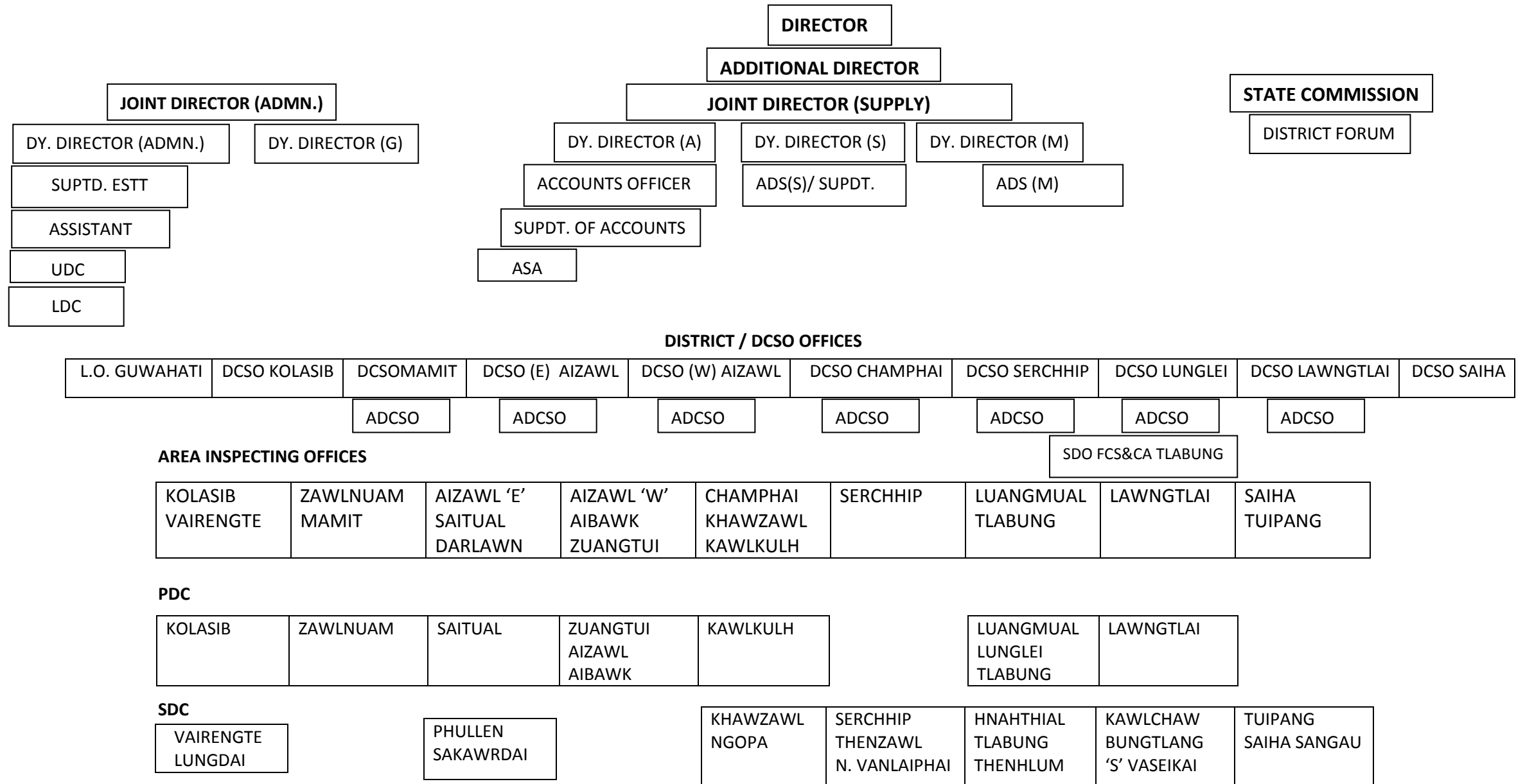
(iv) LIST OF SUPPLY CENTRE IN DISTRICT-WISE AS ON 27.8.2015

Sl. No	Name of District	PDC	SDC	Supply Centres		
1	Aizawl West	Aibawk		Sialsuk	Darlung	Hmuifang
		Aizawl GMG		Khawrihnim	Kanghmun	Reiek
2	Aizawl East	Saitual	Phullen	Khawruhlian	Darlawn	Ratu
			Sakawrdai	Zohmun	Phuaibuang	N. Vervek
				Vanbawng	Khawlian	Suangpuilawn
3	Mamit	Zawlnuam		Mamit	W. Phaileng	Rengdil
				Pukzing	Kanhmun	Tuidam
				Kawrthah	Phuldungsei	Marpara
				Kawrtethawveng	Tuipuibari	
4	Kolasib	Kolasib	Vairengte	Saiphai		Kawnpui
			Lungdai	Bairabi		Bukupi
				N. Hlimen		
5	Serchhip		Serchhip	Chhipphir	Bunghmun	Thingsai
			N. Vanlaiphai	Buarpui	Khawlailung	Chhingchhip
			Thenhlum	Lungdar 'E'	Cherhlun	
			Thenzawl			
6	Champhai	Champhai	Khawzawl	Khawbung	Bungzung	Rabung
		Kawlkulh	Ngopa	Dungtlang	NE Khawdungsei	Hnahlan
				Kawlbem	Biate	Khawhai
				Farkawn	Lungpho	Vaphai
				Chawngtlai	Khuangleng	Kelkang
				Teikhang	Hliappui	
				Sialhawk		
7	Lunglei	Lunglei	Tlabung	Lungsen	Tuichawng	Haulawng
			Hnahthial	Mualthuam 'N'	Chawngte	Tarpho
			Sangau	S. Vanlaiphai	Putlungasih	Borapansuri
				Tawipui 'S'	Lungtian	
8	Lawngtlai	Lawngtlai	Bungtlang	Diltlang	Vathuampui	Damdep
			Vaseikai	Tuithumhnar		
9	Saiha		Saiha	Bualpui NG	Chhualung	Serkawr
			Kawlchaw	Niawhtlang	Chakhang	Tuisih
			Tuipang	Siata		Lungpher
				Tongkolong	Vahai	Phura
				Chapui	Laki	Lungpuk
		Zawngling	Phalhrang	Vawmbuk		

**1. G. DETAILS OF SANCTIONED POSTS AND NUMBER OF VACANCIES
UNDER FOOD, CIVIL SUPPLIES & CONSUMER AFFAIRS AS ON 21.4.2016**

Sl. No	Name of Posts & Group	Nos. of Sanction Posts	No. of Posts filled up	No. of Vacant Posts	Remarks
1	2	3	4	5	6
1	Director 'A'	1	1	-	
2	Addl. Director 'A'	1	1	-	
3	Joint Director 'A'	2	1	1	1 MCS Post
4	Deputy Director 'A'	5	5	-	1 MCS, 1MF&AS, 1 MSS
5	DCSO 'A'	5	5	-	2 MCS Posts
6	Asst. Dir./ADCSD 'A'	6	5	1	
7	SDO (FCS&CA) 'A'	6	6	-	1 MCS Post
8	Superintendent 'A'	2	2	-	
9	FAO 'A'	1	-	1	Filled as T.O. Mamit
10	Accounts Officer 'B' (G)	4	4	-	
11	Supdt. Of Accounts 'B' (G)	9	7	2	
12	IFCS&CA 'B' (G)	49	15	34	
13	SIF&CS Group 'B' (G)	56	37	19	13 posts of SK upgraded to SIFCA vide No.A.11013/16/83-FCS&CA dt. 21.03.2013
14	S.K. Group 'C'	167	118+3 Offtg.=121	46	
15	ASA Group 'B' (NG)	51	36	15	
16	HA/Assistant, Gr. 'B' (NG)	15	13	2	Including 1 post at Mizoram House, Guwahati
17	Steno-II, Group 'B' (NG)	3	2	1	1 vacant State Commission
18	Steno-III, Group 'B' (NG)	5	3	2	
19	UDC, Group 'B' (NG)	24	14	10	
20	LDC, Group 'C'	30	28	2	
21	J.E., Group 'B' (NG)	1	1	-	
22	S.A., Group 'C'	1	1	-	
23	Driver, Group 'C'	21	19	2	
24	Despatch Rider, Group 'C'	1	-	1	
25	Transport Sirdar, Group 'C'	13	4	9	
26	Duftry, Group 'C'	1	-	1	Laithangpuia (pension)
27	Handyman, Group 'D'	1	-	1	
28	Govt. Porter, Group 'D'	344	221	123	
29	G.Ch., Group 'D'	185	96	89	
30	Office Chowkider, Group 'D'	10	7	3	
31	Scaleman, Group 'D'	51	34	17	
32	Peon, Group 'D'	39	23	16	
33	Cook, Group 'D'	1	1	-	
34	Room Bearer, Group 'D'	2	1	1	
35	Masalchi, Group 'D'	1	-	1	
36	Sweeper, Group 'D'	2	1	1	
37	Jamadar, Group 'D'	1	-	1	
38	Porter (Supplies) Gr. 'D'	8	4	4	
	TOTAL	1125	719	406	

1. H. ORGANISATION & HIERARCHICAL CHART OF FOOD, CIVIL SUPPLIES & CONSUMER AFFAIRS DEPARTMENT: MIZORAM



PART –II
THE POWERS AND DUTIES OF THE OFFICERS AND EMPLOYEES
Item (ii) of Section 4 Sub-Section (i) of the Right to Information Act, 2006

THE POWER AND DUTIES OF OFFICERS AND EMPLOYEES

2.A. Directorate : The Department is functioning under the direction of officers of the directorate, headed by the Director.

(1) Director : The Director is the executive head of the department, vested with him an over all authority. He exercises the financial power of the Head of Department, power of Appointing Authority as well as the Disciplinary Authority in respect of Group 'C' and below employees.

The Director takes all important decisions in execution of the business of the department including administrative and financial.

(2) Addl. Director : He will assist Director in the following work –

- (i) Supervision of procurement and distribution of Agency items like LPG, SKO, MS HSD, Iodized Salt, Edible oil and Cement.
- (ii) Installation of new POL Depot and other related matters.
- (iii) Supervision of function of all POL Depot in Mizoram.
- (iv) Matters concerning with LPG, including Mualkhang LPG Bottling Plant.
- (v) Procurement, allotment and distribution of wheat to various Mill in Mizoram and allotment of its products to various Dealers and public.

(3) Jt. Director : There are two posts of Jt. Director viz. Jt. Director (M) and Jt. Director (Admn.)

(i) Jt. Director (M) : The post of Jt. Director (M) is the Cadred post of the Mizoram Food & Civil Supplies Service, and is now lying vacant.

(ii) Jt. Director (Admn.) : This post is manned by MCS (JAG) Officer. He is entrusted to assist the Director in matters relating to establishment/ administration of the department, particularly pertaining to the service matters of all categories of posts within the department. He will also assist Director in matters relating to preparation of Annual Plan and maintenance and detailment of departmental Vehicles (Light).

(4) Dy. Director – 5 nos of posts :

(a) Dy. Director (Admn) : This is the cadre post of MSS (Sr. Grade) who is to assist Director through Jt. Director (Admn) in establishment and administration matters.

(b) Dy. Director (Accts.) : This is the cadre post of MF&AS (Sr. Grade), who is to assist Director in the financial control and its related matters.

(c) Dy. Director (G) : This is MCS cadre post, who is to assist Director through Jt. Director (Admn) in preparation of Budget under Plan Scheme and its implementations.

(d) Dy. Director (M) : This post is held by the Departmental Officer, who is to assist Director through Jt. Director (M) and the Programme Officer of Consumer Affairs.

(e) Dy. Director (S) : This post is also held by the departmental officer who is to assist Director through the Jt. Director (Admn.)

(4) Assistant Directors: There are two (2) posts of Assistant Director in the Directorate assisting the Director through the concerned Officers i.e Jt. Director/ Dy. Director.

(5) Superintendent: There are two (2) Superintendents, one in the Administration/Establishment Branch and another in the General Supply Branch assisting the Director through the concerned Officers i.e Jt. Director/ Dy. Director.

SI No	Name of Officer		Files Allotted
1.	Pu C. Zasanga, Addl. Director	1.	Movement & Monitoring of foodgrains, K.Oil, POL& LPG& Compilation of Data
		2.	Allocation & Distribution of foodgrains K.Oil, POL& LPG & Compilation of Data.
		3.	Coordinating with FCI, IOC, Govt. of India relating to essential commodities.
		4.	Matters relating to Essential Commodities Act/Rules/Manuals etc. & Compilation of Data.
		5.	All Action for purchase of foodgrains/Coordination with Banks, FCI, IOC, Govt. of India.
		6.	CSS including Annapurna/WI/Mid Day Meal.
		7.	All enforcement matters pertaining to Essential Commodities.
		8.	All Courts cases pertaining to the subjects under his charge.
2.	Dr. Andrew H. Vanlaldika,MCS, Joint Director (Admn.)	1.	All Planning and Establishment matters including Training matters.
		2.	Departmental Land & Building matters including matters relating to storage of PDS items and works funded by agencies other than Govt. of Mizoram. Monitoring of all such works.
		3.	Departmental vehicles and their upkeep.
		4.	Information Technology, office automation & End to End computerization.
		5.	RFD
		6.	All matters pertaining to procurement of Office stationeries.
		7.	All matters relating to Food Security Bill.
		8.	All Court Cases pertaining to the subjects under his charge
		9.	All residual matters not covered by this order.
3.	Robert C. Lalhmangaiha, MCS Deputy Director (G)	1.	Planning/Minor Works/Land & Buildings.
		2.	Movement & Monitoring of K.Oil, POL & LPG & Compilation of Data.
		3.	Allocation & Distribution of K.Oil, POL & LPG & Compilation of Data.
		4.	E-Governance/IT/Office Automation.
		5.	National Food Security Bill.
		6.	CSS including Annapurna/WI/Mid Day Meal/End to End Computerisation.
		7.	Consumer Affairs.
		8.	Vehicle
		9.	DDO under Directorate of FCS&CA.
		10	Sugar Tradings

4.	Pi Lalremtluangi, MFAS Deputy Director (Accounts)	1.	All Accounts & Finance Matters.
		2.	Audits.
		3.	Vetting of all purchases for approval/bills.
		4.	DDO for General Supply.
		5.	Presentation & Vetting of Bills for Expenditure Sanction.
		6.	Compilation & tracking of synchronization, payments received by the various PDCs.
5.	Pu H.C. Zonunthara, MSS Deputy Director (Admn.)	1.	Establishment & Administration.
		2.	Training
		3.	Courts Cases.
		4.	RTI/SPIO under RTI Act 2005.
		5.	Stationeries.
6.	Pu Thangrosiama Deputy Director (Enforcement)	1.	Court Cases under Essential Commodities Act/Rules.
		2.	All Enforcement matters pertaining to Essential Commodities.
		3.	Complaints & Prevention of Hoardings, Pilferage of foodgrains.
		4.	Disaster Management.
		5.	RFD
		6.	Ration Card.
7.	Pu R. Siamliana Deputy Director	1.	Ration Cards
		2.	Matters relating to Essential Commodities Act/Rules/Manuals etc. & Compilation of Data.
		3.	Courts Cases under Essential Commodities Act/Rules.
		4.	Movement & Monitoring of foodgrains & Compilation of Data.
		5.	Allocation & Distribution of foodgrains & Compilation of Data
		6.	Coordination with FCI, IOC, Govt. of India relating to Essential Commodities.
8.	Pu V.L. Biakhnuna Superintendent		Establishment & Administration, Planning.
9.	Pu Lalremruata Superintendent		General Supply

B. BRANCHES UNDER DIRECTORATE

1. GENERAL ESTABLISHMENT BRANCH

Sl. No.	Name& Designation	Works allotted
1	2	3
1	Philo Zothankimi, Assistant	1) Court cases 2) Departmental proceedings/ case 3) Quarterly Report on Departmental Proceedings. 4) Liabilities of Officers & Staff 5) Visit of Central Officials
2	Zosangliani, Assistant	1) Matter relating to Departmental works/ constructions etc. 2) Matter relating to NABARD 3) Special Plan Assistance (SPA) 4) NLCPR 5) Maintenance of Elevator 6) Annual Plan 7) Central Plan 8) Matter relating to Weighbridges 9) Matter relating to Departmental Land 10) 13 th & 14 th Finance Commission 11) Half yearly/ Quarterly Report on Plan Scheme 12) Monthly Progress Report under Plan 13) Expenditure statement
3	H. Lalrinsangi, Assistant	1) Stationery and Allied items 2) Office furniture 3) Maintenance of Xerox machine, Fax machine, EPABX, Telephones 4) Matter relating to GPF (NRW/Advance) etc. 5) Tarpheet, Silpouline, Gunny bags/ fencing materials 6) Matter relating to clean Mizoram/ Observation of Cleanliness of Office. 7) Matter relating to FMGE & W 8) Honorarium
4	P.C. Lalmalsawmi, Assistant	1) Creation and retention of posts 2) Conversion & upgradation of posts 3) All service matters of Gazetted Officer 4) Recruitment Rules 5) Compassionate Appointment 6) Service Rules of MESA 7) RTI 8) Executive Records 9) Quarterly Report on Manpower strength 10) Distribution of works
5	Lalbiakthangi, Assistant	1) Pay and allowance and other related matters 2) Salary and Employment Data 3) All Service matters of Driver 4) Property return 5) Quarterly return of staff position 6) RFD

6	Lalremsangi, UDC	1) All service matters of Accounts staff, including ACRs.
		2) HBA/ MCA/ Cycle Advance etc.
		3) LIC, Loan and its related matters.
		4) MACP Scheme
7	Lalsawmliani, UDC	1) All service matters of Sub-Inspectors & Storekeepers, including ACRs.
		2) All pension cases
		3) Alteration of date of birth and change of name.
		4) Any other matter relating the above which may come up from time to time.
8	Lalmuanpuii, LDC	1) All service matter of Ministerial staff, stenographers, J.E & S.A
		2) Matter relating to Tour/ Tour Notes of Ministers, Officers under FCS&CA Department.
		3) Upgradation of stenographers.
		4) Medical refer case.
		5) Muster Roll Employees.
9	Zoramthangi, LDC	1) All matters relating to Group 'D' staff.
		2) Any other matter relating to above which may come up from time to time.
10	Laltleipuii, LD C	1) All important circular/ Notification.
		2) Matter relating to Meetings
		3) Casual leave/ special casual leave
		4) Observation of important days
		5) Disaster management
		6) Matter relating to Good Governance
		7) Subscription of Newspapers.
		8) Purchase of Books.
		9) Advertisement / Display Advertisement
11	Malsawmtluangi, LDC	1) Training of all types
		2) Utilisation of service of Officer on Resource Person
		3) Election matters
		4) Assembly matters
		5) Deputation
		6) District Administration relating to Supply Deptt.
12	Vanlalchhuani, S.K	Preparation of pay & allowances
13	PB Malsawmtluangi, SK	Receipt of Daks
14	Ngurthangmawii, S.K	Issue in respect of Establishment & Accounts Branch
15	R. Sangchhungi, G/P	Issue in respect of General Supply & File Movement
16	Lalhmuakkimi, S.K	Computer Operator to assist H. Lalrinsangi, Assistant, Lalmuanpuii, LDC, Lalbiakthangi, Asst.
17	Vanlalmuani, S.K	Computer Operator to assist, Lalremsangi, UDC, Lalsawmliani, UDC, C. Zoramthangi, LDC.
18	R.C. Vanlalhluna, G/P	Computer Operator to assist Philo Zothankimi, Asst., P.C. Lalmalsawmi, Asst., Malsawmtluangi, LDC and Laltleipuii LDC.
19	Lalremruatpuii Chawngthu, M.R	Computer Operator to assist Zosangliani, Asst. and Lalsawmliana, J.E.

During the absence of any dealing hand, the staff mentioned against their name will look after their works in addition to their own works and vice versa.

1. Philo Zothankimi, Assistant - 1) Zosangliani, Assistant
2. Zosangliani, Assistant - Lalbiakthangi, Asistant
3. H. Lalrinsangi, Assistant - P.C. Lalmalsawmi, Assistant
4. Lalremsangi, UDC - Lalsawmliani, UDC
5. Lalmuanpuii, LDC - Malsawmtluangi, LDC
6. C. Zoramthangi, LDC - Laltleipuii, LDC
7. Vanlalchhuani, S.K. - C. Dengzami, G.P.
8. PB Malsawmtluangi, S.K. - 1) Ngurthangmawii, S.K.
9. Ngurthangmawiii, S.K. - R. Sangchhungi, GP
10. Lalhmuakkimi, SK - Vanlalmuani, SK
11. RC Vanlalhluna, Gh - Lalremruatpuii Chawngthu, MR

II. GENERAL SUPPLY BRANCH

Sl. No. NAME

WORKS ALLOTTED

- | | |
|------------------------|---|
| 1. Lalsangpuii, Asstt. | <ol style="list-style-type: none">1. 20 points programme2. Secretaries meetings3. Meeting of Officers under DFCS&CA4. Monthly performance report of General Supply5. Rehabilitation of Bru Migrants6. Mater relating to Assembly Question7. Mater relating to Parliaments & Lok Sabha Question8. Work Distribution of under General Supply |
| 2. Vungzathanga, Asst. | <ol style="list-style-type: none">1. Carriage Contract (Main Route)2. Carriage Contract (District Route)3. Complaint on Contractors (Main Route)4. Complaint on Contractors (District Route)5. Carrying Rate of Retailer inclung fixation of transit periods6. Project Achievement of FCS&CA7. Report on Economy Measure |
| 3. Lalbiakliani, UDC | <ol style="list-style-type: none">1. S.K.Oil with related matter2. VIP quota and its related mater3. Allocation of Rice4. Procurement of Rice5. Movement of rice (Main route & District route)6. Matter relating to Mega Block7. Tender for purchase of foodstuff8. Distribution of Ration/Special permit to public body |
| 4. Khawlkungi, UDC | <ol style="list-style-type: none">1. Site/Buildings for State Commission & District Forum, Aizawl2. Matters relating on expenditure Accounts under Consumers Affairs3. Issue of LOC to State Commission & District Forum4. Sitting of State Commission & District Forum & bills connected therewith5. Procurement/Issue of Stationeries Furniture etc.6. Audit objection & Audit Parass7. Consumer Protection Act/Rules8. Travelling Allowance in respect of District Forum9. Allowance/Honorarium of State Commission & District Forum |

- | | | |
|----|---------------------|---|
| 5. | J.Zohmingliani, UDC | <ol style="list-style-type: none"> 1. Mid-Day-Meal 2. Monthly report on Bogus Ration Card 3. Edible Oil 4. Computerization of State Commission and District Fora (CONFONET) 5. Meeting of MIZOFED 6. WABNP 7. Sabla 8. Legal Metrology matters |
| 6. | R. Lalrodingi, UDC | <ol style="list-style-type: none"> 1. All matters relating to BPL/AAY 2. Citizens Charter 3. Kharif Marketings 4. Iodised Salt 5. All matters relating to Sugar 6. Essential Commodity Act & Rules all other related matter 7. POL products with its related 8. Matter relating to RTI |
| 7. | J.Kailiana, LDC | <ol style="list-style-type: none"> 1. Opening of FPS & Monthly Reports on FPS 2. Complaint on Retailers 3. Supply Centres with its related matter 4. Annapurna 5. Welfare Institutions 6. Issue of Rice on credit 7. Governor / Chief Minister Speech etc. 8. Matter relating to Vigilance Committee |
| 8. | M.S.Thuamluaia, LDC | <ol style="list-style-type: none"> 1. Monitoring of TPDS 2. Wheat & Wheat Products. 3. End-to-End Computerization 4. Supreme Court matters relating to PDS 5. PDS and its related matter. 6. Matters relating to LPG. 7. National Food Security Act-2013 and its related matters. 8. Re- Organisation of PDC 9. Issue, printing and revision of Ration Cards under NFSA. |

During the absence of any dealing hand the following staff will look after work of other staff as shown against each in addition to their own work and vice-versa.

- | | | | |
|----|-------------------------|---|----------------------|
| 1. | Vungzathanga, Assistant | - | Lalbiakliani, UDC |
| 2. | Lalsangpuii, Assistant | - | Lalrodingi, UDC |
| 3. | Khawlkungi, UDC | - | J.Zohmingliani, UDC |
| 4. | Lalbiakliani, UDC | - | M.S. Thuamluaia, LDC |

III. ACCOUNT BRANCH

Saikhuma, A.O : He shall assist Deputy Director of Accounts in the discharge of duties & responsibilities under (a) Budget Section (b) Audit Section.

Laldingliani, S.A : She shall be overall in-charge of Budget Section & Audit Section.

Sangtluangi, S.A : She shall be overall in-charge of Procurement Section.

Zomuani, S.A : She shall be overall in-charge of Compilation Section.
All correspondences and files of the above cited sections shall be routed through the concerned Superintendent of Accounts and the Accounts Officers.

Lalmangaihi, G.P : She shall function as Computer Operator in Audit Section. She shall also be responsible for receipt & distribution of New Daks in respect of Accounts Branch.

4. **D. Lalbiakmawia, ASA :** BUDGET SECTION

- i) All matters relating to Budget & LOC
- ii) Monthly Expenditure Reports & submission to Finance Department.
- iii) Maintenance of Monthly Accounts of Receipts under Capital Head of Accounts (Treasury Schedule of all Treasuries) and submission of necessary reports thereof.
- iv) Maintenance of Monthly Accounts of Receipts under Revenue Head of Accounts (Revenue Receipts) and submission of necessary reports thereof.
- v) Small Savings Scheme.
- vi) Appropriation & Re-Appropriation of Accounts and formulation of Budget Grants.
- vii) Reconciliation of Expenditure Accounts with the Office of P.A.G.
- viii) Matters relating to Commission/Committees in respect of Finance.

5. **V.L. Malsawmi, ASA :** COMPILATION SECTION

- i) Payment of freight charges of foodstuff in respect of Carrying Contractors, Requisitioned Vehicles and Departmental Vehicles.
- ii) Correspondences regarding carriage charges of foodstuff.

6. **Engzuali Ralte, ASA :** 'A' COMPILATION SECTION

- (i) Compilation & maintenance of Stock & Cash Accounts in respect of AIZAWL WEST DISTRICT comprising of :-
- (ii) Collection of Sale Proceeds including from SBI/MRB and maintenances of all related correspondences.
- (iii) Reports and correspondences on shortages of foodstuff & Sale Proceeds.
- (iv) Reports & correspondences on damaged foodstuff.
- (v) Maintenance of District Main File.
- (vi) Checking of carriage bills of foodstuff in respect of AIZAWL WEST DISTRICT.

B' AUDIT SECTION

- i) Maintenance of Monthly Reports on Recovery of Liabilities and related correspondences in respect of Departmental Officials of FCS&CA and in respect of BDOs.AOs/Other Department's officials.
- ii) Case files of BDOs/AOs/other Departmental Officials
- iii) Preparation of Treasury Challans & Issue of Delivery Orders in respect of Allotments of foodstuff to Security Forces, Homes, Hospitals, Parties & Individuals and maintenance of the related accounts and correspondences.
- iv) Preparation of Treasury Challans & Maintenance of related Accounts in respect of Rents, license fees etc. & submission of Monthly Report to S.A. (B).
- (v) Audit Inspection Reports & submission of replies to P.A.G.
- (vi) Dealings with visiting Audit Teams.
- (vii) Internal Audit Reports.

'C' BUDGET SECTION

- (i) Preparation of Proforma Accounts & submission to P.A.G. AND maintenance of the related Accounts & correspondences.
- (ii) Collection & maintenance of Monthly Detailed Statements on Department's CURRENT ACCOUNT under SBI, Aizawl.

7. Lalzarzova-I, ASA : BUDGET SECTION
He shall function as M.T.O. (i/c Vehicle Branch)

8. Lalrinawma-II, ASA : BUDGET SECTION

- (i) Preparation of contingent bills & maintenance of the related correspondences and Accounts
- (ii) Deposit & withdrawal of 'K' Deposit
- (iii) Matter relating to Security Deposits and release thereof pertaining to freight charges and purchase of foodstuff.

9. Lalzarzova-II, ASA : 'A' COMPILATION SECTION

- (i) Compilation & maintenance of Stock & Cash Accounts in respect of SAIHA DISTRICT comprising of all the works mentioned under Sl. 3(ii) - (vi).

'B' AUDIT SECTION

- (i) Reports of CAGI, Mizoram & submission of replies to PAG.
- (ii) Reports of CAGI & submission of necessary replies thereof.
- (iii) Draft Paras, Statement of Facts, etc. & submission of replies thereof.
- (iv) Instructions regarding Audit matters.
- (v) Appropriation Accounts of CAGI & submission of replies thereof.
- (vi) Meetings of various Committees on Audit matter.
- (vii) Maintenance of Audit Certificates.
- (viii) Case Files of defaulting Retailers.
- (ix) Replies to RTI questions in respect of all works under Accounts Branch.

10. Ramengmawia, ASA : COMPILATION SECTION

- (i) Compilation & maintenance of Stock & Cash Accounts comprising of all the related works mentioned under Sl. 3 (ii) - (vi) in respect of LUNGLEI DISTRICT & AIZAWL EAST DISTRICT.

11. Lalrammawia, ASA : COMPILATION SECTION

- (i) Compilation & maintenance of Stock & Cash Accounts comprising of all the related works mentioned under Sl. 3 (ii) - (vi) in respect of CHAMPHAI DISTRICT.

12. Biaknunchami, ASA : 'A' COMPILATION SECTION

- (i) Compilation & maintenance of Stock & Cash Accounts comprising of all the related works mentioned under Sl. 3 (ii) - (vi) in respect of LAWNGTLAI & MAMIT DISTRICT

'B' BUDGET SECTION

- (i) Disposal/Payment of Personal claims on Travelling Expenses & Leave Travelling concessions with maintenance of their related correspondences.

13. Zohmingthangi, ASA : 'A' COMPILATION SECTION

- (i) Compilation & maintenance of Stock & Cash Accounts comprising of all the related works mentioned under Sl. 3(ii) - (vi) in respect of KOLASIB & SERCHHIP DISTRICT

'B' BUDGET SECTION

- (i) Disposal/Payment of Medical Re-imburements with maintenance of the related correspondences.
(ii) Disposal/Payment of claims on Children Educational Allowances and attachment allowances with maintenance of their related correspondences.

14. Lalthangliani, ASA : COMPILATION SECTION

- (i) Maintenance of the Accounts and correspondences in respect of Detailed Despatched & Receipts of foodstuff from various FCI Depots - various PDCs and from Muanna Godown, Zuangtui - various PDCs/SDCs/Centres.
(ii) Cross-checking of the Despatched consignments with the Receipted consignments.
(iii) Correspondences in respect of Missing/Doubtful consignments.

15. Lalremsiami, M/R : She shall assist Lalthangliani, ASA in the works stated above.

16. Tlauliana, LDC : He shall function as Computer Operator.

PROCUREMENT SECTION :

1. Lalbiakkima, ASA :

- i) General correspondences on TPDS, HSTS & RTC.
- ii) Purchase of foodstuff from FCI comprising of :-
 - (a) Preparation & maintenance of A/C Bills.
 - (b) Deposit of Bank Draft/DCR to FCI
 - (c) Deposit of payments received from FCI into Govt. Account.
- iii) Matters relating to purchase of foodstuff from Private Firms/Individuals.
- iv) Payment of bills with maintenance of correspondences in respect of Private Firms/Individuals.

2. Lalsawmliani, ASA :

- i) Preparation & submission of claims on HSTS to FCI in respect of TANHRIL DEPOT-PDCs with maintenance of the related correspondence
- ii) Settlement of differential costs of foodstuff.
- iii) Maintenance of Accounts on claims & Receipts of Payments from FCI in respect of all Depots - All PDCs.

3. Lalremtluanga, ASA :

- i) Preparation & submission of DCC Bills to PAG
- ii) Preparation & submission of claims on HSTS in respect of SILCHAR DEPOT – PDCs
- iii) Preparation & Re-imburement bills in respect of BRU REPATRIATES and submission to Home Department and maintenance of Records of Receipts of Payments thereof with all related correspondences.

He shall also assist Lalbiakkima, ASA in the works of purchase of foodstuff.

4. Vanlalhruaii, ASA :

- (i) Preparation & submission of claims on HSTS in respect of:-
 - (a) Bualpui Depot - PDCs
 - (b) Bairabi Depot - PDCs
 - (c) Lunglei Depot - PDCs
 - (d) Lawngtlai Depot PDCs
- (ii) Maintenance of Accounts on claims & Receipts of Payment in respect of MIDDAY MEAL.
- (iii) Preparation of LEDGER ACCOUNTS

5. Malsawmtluanga, G/Ch: He shall assist the above ASAs in preparation of claims on HSTS.

6. Lalremmawii, Porter: Computer Operator.

2. B DISTRICT OFFICES

(i) (a) District Civil Supplies Officer, Aizawl 'W' Aizawl.

Sl.No.	Name	Designation	Nature of Work / Duty Allotted
1	2	3	4
1	Lalkunga Sailo	DCSO	Head of Office and DDO

2	R. Sanghnuna	ADC SO	i/c Ration Card and allotted responsibility to append signature in Ration Card
3	Zodinpuui	A.O	Supervision of the works of Accounts Section
4	C. Zodinpuui	S.A	Attached to DCSO, Lunglei
5	Lalhmuaqliana	IFCS	Allotted responsibility to append Signature on Delivery Order
6	Lalzarliani	H.A	Supervision of the works of Establishment Section
7	Ramngaihzuala	ASA	Compilation of Centre Accounts, etc.
8	Lalmangaihi	ASA	Compilation of Centre Accounts, etc.
9	Zoparmawii	SIFCS	To assist IFCS Hqrs.
10	Lucy Zaithuami	UDC	Cashier / Handling of cash
11	C. Rengthuampuii	LDC	Allotted appointment/complaint of FPS Dealer/S.K. Oil Dealer, etc.
12	Laltanpuui Hmar	LDC	Allotted NPNS to Primary Education & Wheat Products
13	Lalchhuanawmi	SK	Preparation of Pay bills of Officers & Staff
14	Lalchhanchhuaha	SK	Allotted preparation of Delivery Order of Rice, etc.
15	Lalmachhuana	SK	Allotted preparation of Delivery Order of Rice, etc.
16	Sapthlengliana	SK	Allotted preparation of Delivery Order of Rice, etc.
17	R.S. Lalrinmawia	SK	Allotted preparation of Delivery Order of Rice, etc.
18	S.T. Hmingmawia	SK	i/c of Ration card regarding addition/deletion, etc.
19	F. Zoramthara	Peon	Duty as IV Grade in the Office of DCSO
20	K. Sangthanga	G/ch	Duty as IV Grade in Accounts Branch
21	Lalrinawma	O/ch	Assist Cashier & Xerox duty
22	Liankhumi	G/ch	Duty as IV Grade in Ration Card Room
23	C. Lalchhuanawma	G.P	Duty as IV Grade in ADCSO
24	R. Ramchullovi	G.P	Proof reading, record, maintenance of Printed Ration Card for disposal
25	R. Lalnunmawii	S.M	Issue and Receipt of Daks
26	Lalbiaksanga	G.P	Duty as IV Grade in D.O Section
27	P.C. Laldingluaia	Peon	Duty as IV Grade in D.O Section
28	Varsangkimi	G.P	Proof reading, record, maintenance of Printed Ration Card for disposal
29	Lalropara	S.M	Engaged as Computer Operator
30	Lalramluaha	G.P	Duty as IV Grade in Establishment Section
31	Kapzauva	G.P	Duty as IV Grade in the Office of DCSO

KHAWRIHNIM CENTRE			
1	Lallianruala	SK	Responsible in handling Govt. properties / stores in the godown, etc.
2	Lalrawngbawla	G/ch	Duty as IV Grade in the godown
3	Zoramchhana	G.P	Duty as IV Grade in the godown

KANGHMUN CENTRE			
1	Khatlianthuama	SK	Responsible in handling Govt. properties / stores in the godown, etc.
2	Lalhmingliana	G.P	Duty as IV Grade in the godown
3	Laldinpuia	G.P	Duty as IV Grade in the godown
AIBAWK PDC			
1	R. Hmingsangliana	IFCS	Responsible in handling Govt. properties / stores in the godown, etc.
2	Lalmalsawmi	SK	Assist IFCS
3	K. Lalrosanga	G.P	Duty as IV Grade in the godown
4	Biakngheta	G.P	Duty as IV Grade in the godown
5	Malsawma	G.P	Duty as IV Grade in the godown
REIEK CENTRE			
1	C. Zothanpari	SK	Responsible in handling Govt. properties / stores in the godown, etc.
2	Rengchuana	G.P	Duty as IV Grade in the godown
3	Laldawngliana	G.P	Duty as IV Grade in the godown
SIALSUK CENTRE			
1	H. Lalduhawma	SK	Responsible in handling Govt. properties / stores in the godown, etc.
2	Lalchawiliana	G/ch	Duty as IV Grade in the godown
3	Laltluanga	S.M	Duty as IV Grade in the godown
4	C. Zothanmawii	G/ch	Duty as IV Grade in the godown
DARLUNG CENTRE			
1	Lalbiaktluanga	SK	Responsible in handling Govt. properties / stores in the godown, etc.
2	Lalsangliana	G/ch	Duty as IV Grade in the godown
HMUIFANG CENTRE			
1	Lalngurliani	SK	Responsible in handling Govt. properties / stores in the godown, etc.
2	Vanparlawma	G/ch	Duty as IV Grade in the godown

RAWPUICHHIP CENTRE

S/N	Name	Designation	Nature of Work / Duty Allotted
1	R. Laldawngliana	SK	Responsible in handling Govt. properties / stores in the godown, etc.
2	Lalbiakdika	G/ch	Duty as IV Grade in the godown

I (b) SDF & CSO KOLASIB

<i>Sl. No.</i>	<i>Name</i>	<i>Designation</i>	<i>Nature of Work/Duty Allotted</i>
1	Biakthansanga Sailo	DCSO	
2	H. Lalluaia	ADCSO	Supervision of all the works allotted to the DCSO's staff Kolasib and signing of delivery orders etc.

3	G. M. Laskar	IFCS	Ramnagar, Silchar FCI duty
4	K. Lalfakzuala	ASA	1) Supervision of Godown. 2) Signing of Challans. 3) Preparation of budget etc.
5	Zothanzauva	ASA	Checking and Passing of FP Shop Retailer Bills
6	Ruby Majumdar	ASA	Checking and passing of Carrying Contractor Bills, Compilation etc.
7	Lalrinawma Khalthang	ASA	Checking and Passing of FP Shop Retailer Bills, Food Security etc.
8	H. Lalnunmawia	SIFCS	i/c Checkgate Vairengte
9	Lalthankima	SIFCS	i/c FCI Rengtekawn
10	R. Hrangkima	SIFCS	Dealing file and submission of stock position etc.
11	Zirsangliana	SIFCS	i/c Lungdai Centre
12	F. Lalhmingliani	SIFCS	i/c Govt. Godown Kolasib
13	II Choudhury	SIFCS	i/c Vairengte Godown
14	HK Nath	LDC	Cashier
15	S. Lalthanpari	LDC	Appointment of FPS Retailers, Miscellaneous, etc.
16	Lallawmzuala	LDC	Appointment of SK Oil Retailers, Pension etc.
17	Zothankima	Driver	Driver DCSO Kolasib
18	RC Lalawmpuii	Peon	SDC Vairengte Office duty
19	F. Vanlalpeka	S/K	i/c Bairabi Centre
20	Vanlalchhuanga	S/K	i/c Bualpui centre
21	Vanlalthuma Ralte	S/K	i/c Kawnpui centre
22	Vanlalthuma II	S/K	i/c Bukpui centre
23	Laltana	S/K	i/c Saiphai centre
24	T. Rohmingliana	O/Ch	Peon at DCSO Office, Kolasib
25	Laldinthara	S/M	Bairabi godown duty
26	Lalzamlova	S/M	Service is utilized at Govt. godown N. Hlimen
27	Zosangi	S/M	Peon at DCSO office, Kolasib
28	Lalthlengliana	C/Ch	SDC Lungdai duty
29	R. Begun	G/Ch	Service is utilized at DCSO Office, Kolasib
30	Silpi Deb	G/Ch	Service is utilized at DCSO Office, Kolasib
31	K. Lalhmangaiha	G/Ch	Service is utilized at FCI Rengtekawan
32	S.M. Das	G/Ch	Service is utilized at Govt. Godown Kolasib
33	C. Lalbiakliana	G/Ch	Service is utilized at Checkgate Vairengte

Sl. No.	Name	Designation	Nature of Work/Duty Allotted
34	Lalremmawii	G/Ch	Service is utilized at Govt. godown N. Hlimen
35	Thanghlira	G/Ch	Service is utilized at Govt. godown Kawnpui
36	Lalthanpuia	G/Ch	Service is utilized at Govt. godown Kawnpui
37	Ngotawia	G/Porter	Service is utilized at Govt. godown Lungdai
38	Lalrinawma II	G/Porter	Service is utilized at Checkgate Vairengte
39	Pasiner Leiyk	G/Porter	Service is utilized at Govt. godown Saiphai
40	R. Lalzuiliana	G/Porter	Service is utilized at Govt. godown Kawnpui
41	Pradeep Kr. Tudu	G/Porter	Service is utilized at Govt. godown Kolasib
42	Lalramhluna	G/Porter	Service is utilized at Govt. godown Kawnpui
43	Girjan Musub	G/Porter	Chowkider at DCSO office, Kolasib
44	TA Barbhuiya	G/Porter	Service is utilized at Vairengte godown
45	Tlantuliana	G/Porter	Service is utilized at Govt. godown Saiphai
46	R. Lalmalsawma	G/Porter	Service is utilized at Kawnpui Centre
47	Ngurchungnunga	G/Porter	service is utilized at Vairengte Godown
48	B. Lalremruata	G/Porter	Service is utilized at Govt. godown Kolasib
49	S. Begum Laskar	G/Porter	Peon at DCSO office, Kolasib
50	Lalthanmawii	G/Porter	Issue/Receipt & Peon at DCSO office, Kolasib
51	Laltanpuui	G/Porter	Service is utilized at Vairengte SDC
52	Lalchhanhima Chhangte	G/Porter	Service is utilized at Govt. godown Bukpui
53	Lalrindika	G/Porter	
54	Lalmuanawma	D/Rider	D/Rider at DCSO office, Kolasib
55	Lalnunsanga	MR Gr. 'D'	Peon at DCSO office, Kolasib
56	Lalbuatsaiha	MR Gr. 'D'	Peon at DCSO office, Kolasib
57	Henry Zosangzuala	MR Gr. 'D'	Service is utilized at Govt. godown Lungdai
58	Dennis Lalnunmawia	MR Gr. 'D'	Service is utilized at Govt. godown Vairengte
59	C. Lalnunsanga	MR Gr. 'D'	Service is utilized at Govt. godown Bukpui
60	John Rosangliana	MR Gr. 'D'	Service is utilized at Govt. godown Lungdai
61	Lalengliana	MR Gr. 'D'	Service is utilized at Govt. godown Saiphai
62	Lalramchhana	MR Gr. 'D'	Service is utilized at Govt. godown Lungdai
63	Remruatmawia	MR Gr. 'D'	Service is utilized at DCSO office, Kolasib
64	Zomuanpuia	MR Gr. 'D'	
65	Rinnghinglova	MR Gr. 'D'	
66	Lalmalsawma	Checkgate Keeper	Service is utilized at Checkgate Vairengte

II (a) District Civil Supplies Office, Aizawl 'E' Aizawl

S/N	Name	Designation	Nature of Work/Duty allotted
1	2	3	4
1	Malsawmtluanga	DCSO	Over all i/c DCSO 'E' Office
2	Lalthanmawia	ADCSD	Overall Supervision of Works under General Supply
3	Saikhuma	AO	Attached to DTE FCS&CA Office
4	C. Lalremruata	SA	Supervision works of Accounts Br/Sec
5	Motilal Chhetri	IFCS	To assists ADCSD
6	Zairemkima	- do -	Centre i/c of Saitual PDC
7	B. Chalchamliana	HA	Distribution of works ACR/PAR, Property Return etc.
8	K. Lalbiakengi	ASA	Compilation of Centre A/c's Passing of contingency bills etc
9	Lalthansangi	- do -	Compilation of Centre A/c's Passing of contingency bills etc
10	Denghmingliani	- do -	Compilation of Centre A/c's Passing of contingency bills etc
11	Lallianzuala	- do -	Compilation of Centre A/c's Passing of contingency bills etc
12	Zoawithanga	SIFCS	Centre i/c of Phullen SDC
13	J. Thantluanga	- do -	Centre i/c of Sakawrdai SDC
14	Vanlalchhuana	- do -	Stock Position Report Zuangtui/Chekgate etc
15	Rochhumi	- do -	Monthly Distribution of SK Oil Town+Suburb+Centre etc
16	Lalfeli	- do -	Movement of foodstuff, Allotment of Wheat Product, Anganwadi, etc
17	Vanlalchhuangi	- do -	Food Security/Allotment of AAY,PHH, APL etc
18	F. Lalthanmawii	UDC	Appointment of FP Shop Retailer. Release of Security Deposit of R/T etc
19	Vanlalchhani	LDC	Cashier
20	Lalramchuani	- do -	Appointment of Sk. Oil Dealer/Issue of challan/D.O to R/T etc
21	Zohmingliana	Driver	
22	Thanghmingliana	Peon	Office Peon
23	Lalramhluna	SK	Centre i/c of Darlawn
24	Thuamliana	- do -	Centre i/c of Khawruhlian
25	Vanlalhruaia pachuau	- do -	Centre i/c of Ratu
26	Lalremmawii	- do -	To Assist IFCS Saitual.
27	Velkima	- do -	Centre i/c of Vanbawng
28	L. Thangkhannmanga	- do -	Daily Stock Position.
29	Lalhmingliana	- do -	Centre i/c of Suangpuilawn
30	K. Zothanmawii	SK	Allotment of Midday Meal, AAY etc..
31	M. Zohmingliani	- do -	Construction/Repair of Godown/Staff Quarter, Issue of Challan D.O to Retailer
32	Lalthanthuama	- do -	Centre i/c of Khawlian
33	Zohrangzuala	- do -	Receipt and Issue of Daks
34	Lalbiaksanga	- do -	Centre i/c of N. Vervek
35	Vanlalchama	- do -	
36	S.P. Zamuana	SK	Issue of D.Os AAY, PHH, Non-NFSA to Retailer/Appointment of Sk.Oil etc.
37	Hualthanchhuma	- do -	Centre i/c of Zohmun
38	Zoramdinthara	- do -	Advance of withdrawal of GPF, Issue challan & Dos of Home Institution

S/N	Name	Designation	Nature of Work/Duty allotted
1	2	3	4
39	Theressa Z. Hmar	- do -	Centre i/c of Phuaibuang
40	Lalthanmawia	G/ch	to assist SIFCS Phullen
41	Thangtura Sailo	- do -	to assist SK Khawruhlian
42	Chawngthuama	- do -	Office Peon
43	Rosangliana	- do -	to assist Sk Darlawn
44	Chharhmingthanga	- do -	to assist IFCS Saitual
45	Roenga	- do -	Office Peon
46	Sapchhunga	- do -	to assist Sk Darlawn
47	Lalthuthlunga	- do -	to assist Sk New Vervek
48	Khawkunga	- do -	to assist SK Vanbawng
49	Lalnuntlinga	- do -	Office Peon
50	Tawnkima	- do -	to assist IFCS Saitual
51	Vanhnuaitanga	S/M	to assist Sk Phuaibuang
52	Lalzuiliana	- do -	Office Peon
53	Rinkima	- do -	to assist Sk Vanbawng
54	M.S. Dawngliana	- do -	to assist IFCS Saitual
55	Rosangzuala	- do -	Office Peon
56	Lalsanga-II	Porter	to assist Sk Vanbawng
57	Liandawla	- do -	to assist Sk Ratu
58	Vaingailova	- do -	to assist SIFCS Sakawrdai
59	Zoliana	- do -	Office Peon
60	Lalramhluna	- do -	to assist IFCS Saitual
61	Laltanpuia-II	- do -	to assist Sk Zohmun
62	Laltanpuia-III	- do -	to assist Sk Phuaibuang
63	Liankanglova	- do -	to assist Sk Khawruhlian
64	Lalbiaksanga-I	- do -	Office Chowkider
65	VL Hlutthanga	- do -	Dak Runner
66	R.T. Kima	- do -	to assist SIFCS Sakawrdai
67	H. Lalmalsawma	- do -	to assist IFCS Saitual
68	Rinvuana	- do -	Office Peon
69	J. Vanlallawmi	- do -	Pay Bill Assistant
70	Lalremtluanga	- do -	to assist Sk Khawlian
71	Chawimawithangi	- do -	Office Peon
72	Lalzingpuii	- do -	to assist Sk Zohmun
73	Albert Lalrintluanga	M.R	Computer Operator DCSO 'E' Office
74	Lalrinhlua	- do -	to assist Sk Darlawn
75	Lalmuankima	- do -	to assist Sk Khawlian
76	Vanlalsawma	- do -	to assist Sk Suangpuilawn
77	Vanlalthlamuana	- do -	to assist Sk Khawruhlian
78	F. Lalchamliana	- do -	to assist SIFCS Phullen
79	Lalfamkima	- do -	to assist IFCS Saitual
80	C. Lalnunmawia	- do -	to assist Sk N. Vervek
81	Lalbiakmawia	- do -	to assist Sk Vanbawng
82	Lalbiakmawia	- do -	to assist Sk Vanbawng
83	R. Lalremkima	- do -	to assist Sk Ratu
84	Michael Zodinpuia	- do -	Office Peon
85	Lalramrawngbawla	- do -	to assist Sk Suangpuilawn

II (b) DCSO Office, Serchhip

Sl. No.	Name	Designation	Nature of Work / Duty allotted
1	2	3	4
	DCSO Office, Serchhip		
1	Rosangmawia	DCSO	Head of DCSO Serchhip jurisdiction
2	Lalremliana	ASA	Accounts matter
3	Lalrinawma	ASA	Accounts matter
4	RL.Phena	SIFCS	Inspecting
5	H. Lalmalsawmi	LDC	Establishment matter
6	V.Lalromawii	LDC	Establishment matter
7	Rodingliana	Driver	DCSO Driver
8	H.Chhawnthanga	S.K.	Inspecting
9	Laldinchami	Peon	Duty for DCSO
10	Melody Lalremruati	G.Ch.	Chowkidar at DCSO Office
11	Zosanga	G.P.	Duty for General Branch
12	Lalnunsanga	G.Ch.	Chowkidar at DCSO Office

Serchhip PDC

13	Vanlalhriata	IFCS	Godown i/c at Serchhip PDC, Inspecting of fed Centres
14	Lalthlamuani	S.K.	Assist Pu Vanlalhriata, IFCS at Serchhip PDC
15	Englawma	G.P.	Govt Porter at Serchhip PDC
16	Lalnunhlina	G.P.	Govt Porter at Serchhip PDC

Chhingchhip Centre 25

17	R.Lalrohluna	S.K.	Godown i/c at Chhingchhip Centre
18	Varthanmawia	S.M.	Scaleman at Chhingchhip
19	Lalhmunliana	G.P.	Govt Porter at Chhingchhip

Khawlailung Centre

20	JH Zarzoliaana	S.K.	Godown i/c at Khawlailung Centre
21	PC Thankunga	G.P.	Govt. Porter at Khawlailung
22	Lalkristiana	G.P.	Govt Porter at Khawlailung

E Lungdar Centre

23	B.Lalbiakvela	S.K.	Godown i/c at E.Lungdar
24	Laltlanfela	G.Ch.	Godown Chowkidar at E.Lungdar
25	R.Lalremthanga	G.P.	Govt Porter at E.Lungdar

N Vanlaiphai Centre

26	Lalawmawia	SIFCS	Godown i/c at N.Vanlaiphai Centre
27	James Hmingthangzuala	G.Ch.	Godown Chowkidar at N.Vanlaiphai

Cherhlun Centre

28	J.Lalrotluanga	S.K.	Godown i/c at Cherhlun Centre
29	Rokunga	G.P.	Govt Porter at Cherhlun
30	Lalmuanzuala	G.P.	Govt Porter at Cherhlun

Thingsai Centre

31	Lalramchhana	S.K.	Godown i/c at Thingsai Centre
32	CVL Malsawmzuala	G.Ch.	Godown Chowkidar at Thingsai
33	Lalhriatrenga	G.P.	Govt. Porter at Thingsai

Thenzawl SDC

34	Sangzela	SIFCS	Godown i/c at Thenzawl SDC, Inspecting of fed Centres
35	Tlangkhuma	G.Ch.	Godown Chowkidar at Thenzawl
36	Thanglianachhunga	G.P.	Govt Porter at Thenzawl
37	C.Lalfakawma	G.P.	Govt Porter at Thenzawl
38	Nunthianghlina	G.P.	Govt Porter at Thenzawl
39	Lalkrosthanga	G.P.	Govt Porter at Thenzawl

	Chhipphir Centre		
40	Lianzela	S.K.	Godown i/c at Chhipphir Centre
41	R.Zomuanpuia	G.P.	Govt Porter at Chhipphir
42	Biakchhhawna	G.Ch	Godown Chowkider at Chhipphir
	Buarpui Centre		
43	R.Vanlaltluanga	G.Ch.	Godown Chowkidar at Buarpui
44	F.Lianzuala	G.P.	Govt Porter at Buarpui
	Thenhlum Centre		
45	Vanlalchhuana - II	S.K.	Godown i/c at Thenhlum Centre
	Bunghmun Centre		
46	Vanlaltlana	S.K.	Godown i/c at Bunghmun Centre
47	Lalbuatsaiha	G.P.	Govt Porter at Bunghmun
48	Lalropuia	G.P.	Govt Porter at Bunghmun

III. DCSO, LUNGLEI

SN	Name	Designation	Nature of work/ Duty allotted
1	2	3	4
1.	H. Lalrinpuia	DCSO	Supervision of all roles of Supply matters
2.	B. Liansiama	ADCSO	Supervision of Supply matters including checking of con. Affairs
3.	P. Lalengmawii	H.A.	Correspondences of all establishment/pension etc.
4.	Lalduhawmi	UDC	Cashier, correspondence relating to cash matters
5.	Lalramliana Ralte	UDC	Bill Assistant/ preparing Pay bills, etc.
6.	Vanhlupeui	LDC	Appointment of Retailers, Rice, K.Oil
7.	R. Lalbiakliana	ASA	Accounting relating to all supply matters
8.	Pachuaui Lalbiaksanga	ASA	-do-
9.	C. Vanlala	IFCS	Distribution, receipt and issue of Rice
10	Lalneihkima	IFCS	-do-
11	Laltanpuia	Driver	Driving
12	A. Lalsanglura	IFCS	Attached to Pre-Distributing Centre
13	HP Lalrammawia	IFCS	Attached to DCSO Office for supervising of lifting of Rice
14	H. Lalbanga	SIFCS	Receipt/Issue of Rice to various Centres
15	R. Zirliana	SIFCS	-do-
16	SR Lalramzauva	SIFCS	-do-
17	CT Biakthansanga	SIFCS	-do-
18	KV Liana	S.K.	Attached to PDC
19	Lalruatfeli	S.K.	Receipt/Issue of Rice
20	H. Aingengi	S.K.	-do-
21	K. Zoramchhana	S.K.	-do-
22	C. Lalrosanga	S.K.	-do-
23	H. Lalruata	S.K.	Attache to DCSO Office/Receipt & Issue of letters
24	L Mahu	S.K.	Receipt/Issue of Rice
25	Saimawia	S.K.	-do-
26	Lalawmpuia	S.K.	Attached to DCSO Office
27	Dominic Rozamlia	S.K.	Receipt/Issue of Rice
28	Chuantuahlala	Peon	Attached to Chawngte
29	H. Vanlalruati	Peon	Attached to H.A. Room
30	Lalrinmawii	Peon	Attached to SIFCS Office, S. Vanlaiphai
31	C. Rohlira	G/Ch	Attached to DCSO Office/Typing Mualthum Godown
32	C. Rodinga	-do-	Attached to DCSO Office/Typing
33	PC Kapthianga	-do-	Attached to allotment of ration, etc.
34	Lalzamlia	-do-	Attached to DCSO Office, Night duty
35	Kapthangpuia	-do-	Attached to Centre
36	Zohmingthanga	Scaleman	Attached to Luangmual Godown as Scaleman
37	Lawmzama	G/Ch	PDC Hnahthial
38	Malsawmzuala	-do-	DCSO Office as Peon
39	Lalh mangaih zuala	-do-	Attached to Centre
40	Thanmawii	-do-	Attached to DCSO Office, assist Cashier

SN	Name	Designation	Nature of work/ Duty allotted
1	2	3	4
41	Zadingi	-do-	Attached to DCSO at Account Branch as Peon
42	Lalengzauva	-do-	Attached to DCSO as Dak runner
43	Sangtluanga	-do-	Attached to Centre
44	Laldingliana	-do-	Attached to Tawipui 'S' Centre
45	Lalrinawma	Govt. Porter	Loading and unloading of foodstuff
46	Biakkima	-do-	-do-
47	Vanlalhluna	-do-	-do-
48	Rokima	-do-	-do-
49	Zohmingmawia	-do-	-do-
50	K. Lalsanga	-do-	-do-
51	Liantluang	-do-	-do-
52	Chawngdingliana	-do-	-do-
53	Malsawma	-do-	-do-
54	Zothanga	-do-	-do-
55	Lalramzauva	-do-	-do-
56	Rosanga	-do-	-do-
57	Lalchhuma	-do-	-do-
58	Tlanlawma	-do-	-do-
59	Dokapa	-do-	-do-
60	C. Biakchhunga	-do-	-do-
61	Vanlalngura	-do-	-do-
62	Rammawia	-do-	-do-
63	Rohmingthanga	-do-	-do-
64	Lalremruata	-do-	-do-
65	Lalramthanga	-do-	-do-
66	C. Lalthanzuala	-do-	-do-
67	Thanchungnunga	-do-	-do-
68	Zodingliana	-do-	-do-
69	Tlanghmingthanga	-do-	-do-
70	Lalremruati	-do-	-do-
71	T. Biakzama	-do-	-do-
72	Lalhmunsanga	-do-	-do-
S/N	Name	Designation	Nature of Work/Duty alloteted
1	2	3	4
1.	H. Lalramthanga	SK	Receipt and issue of Rice
2.	Promot Kumar	G/Ch	Loading and unloading of Rice
3.	Singkamlova	G/Ch	Loading and unloading of Rice
4.	Chhimthangpuia	G/P	Loading and unloading of Rice
5.	Lalremruati	G/P	Loading and unloading of Rice

IV. District Civil Supplies Office, Champhai.

S/N	Name	Designation	Nature of Work/Duty allotted
1	2	3	4
1.	HC.Lallianzuala	DCSO	As DCSO
2.	Zosangluaia	ADCSD	Assist DCSO as and when
3.	CC.Sakhawliana	IFCS&CA	Station at Godown PDC issue receipt of
4.	Lalbiakkunga	ASA	Monthly Compile of Centre, Pass & Checks bills
5.	MS.Dawngzuala	ASA	Monthly Compile of Centre, Pass & Checks bills
6.	PC.Lalmachhuani	UDC	Cashier
7.	Tlangthangzuali	LDC	Establishment, General file Construction of Godown Quarter etc.
8.	Laltanpuui	LDC	Allotment of Food Staff NFSA etc.
9.	RS.Vantharngaka	SIFCS	Posted at Ngopa
10.	Rohnuna	SIFCS	Posted at Khawzawl
11.	Lalthanmawia	SIFCS	Posted at Sialhawk
12.	Vanlalhuaia	SIFCS	Posted at Kawkulh
13.	C.Ramrinliana	SK	Posted at Hnahlan
14.	Rozamliani Chawngthu	SK	Posted at Kelkang
15.	F.Lalhungliana	SK	Posted at Khuangleng
16.	Zosangkima Renthlei	SK	Posted at Dungtlang
17.	Vanlalveni	SK	Posted at Khawbung
18.	lalengliani	SK	Posted at Vaphai
19.	F.Zirliana	SK	Posted at Farkawn
20.	C.Lalrammuanpui	SK	Posted at Bungzung
21.	Lalrinzuala Pachuau	SK	Posted at Lungpho
22.	JH.Neihkima	SK	Posted at Hliappui
23.	R.Remmawia	SK	Posted at NE.Khawdungsei
24.	J.Lalramtluanga	SK	Posted at Kawlbem
25.	Lalrinpuia Hualngo	SK	Posted at Teikhang
26.	Zonuntluanga	SK	Posted at Rabung
27.	HC.Lalthawmmawia	SK	Posted at Khawhai
28.	SN.Lalmuanpui	SK	Posted at Biate
29.	John Zoramawia	SK	Posted at DCSO Office Champhai
30.	Chhawrthangpui	G/Ch	Posted at DCSO Office Champhai

S/N	Name	Designation	Nature of Work/Duty allotted
1	2	3	4
31.	PC.Thanglawta	G/Ch	Posted at Ngopa
32.	Lianthuama	G/Ch	Posted at Champhai PDC
33.	K.Zoramthanga	G/Ch	Posted at DCSO Office Champhai
34.	Lalthankima	G/Ch	Posted at NE.Khawdungsei
35.	Lalzuui	G/Ch	Posted at DCSO Office Champhai
36.	B.Lalringgheta	G/Ch	Posted at Hliappui
37.	Zothansanga	G/Ch	Posted at Khawbung
38.	H.Lalremsiama	G/Ch	Posted at Khawhai
39.	Thangmuana	G/Ch	Posted at Teikhang
40.	H.Laltanpuia	G/Ch	Posted at Biate
41.	R.Vanlalthanga	G/Ch	Posted at Khawzawl
42.	Thankungi	G/Ch	Posted at Kawlkulh
43.	Hrangvela	G/Ch	Posted at Khawbung
44.	Lalrinthanga	G/Ch	Posted at Vaphai
45.	RK.Rohlua	SM	Posted at Khuangleng
46.	VM.Dawngsanga	SM	Posted at Khawhai
47.	Lalthlenga	SM	Posted at Ngopa
48.	Vanlalhruaia	SM	Posted at Champhai PDC
49.	Laldawnthanga	SM	Posted at Kawlkulh
50.	JH. Lalrinkimi	SM	Posted at DCSO Office Champhai
51.	T.Thangseia	SM	Posted at Vaphai
52.	Lalremsiama	GP	Posted at Khawhai
53.	Lalnghinglova	GP	Posted at Bungzung
54.	Lallawmsanga	GP	Posted at DCSO Office Champhai
55.	Lalchuaailova	GP	Posted at Dungtlang
56.	B.Zaliana	GP	Posted at Dungtlang
57.	Lalengmawii	GP	Posted at Biate
58.	C.Lalthlamuana	GP	Posted at Khawhai
59.	Vanlalrawni	GP	DCSO Office Champhai
60.	Lalhmunpuia	GP	Posted at Lungpho

S/N	Name	Designation	Nature of Work/Duty allotted
1	2	3	4
61.	Lalbiakzaua	GP	Posted at Kawlkulh
62.	Lallura	GP	Posted at Khawhai
63.	Vanlalruati	GP	Posted at DCSO Office Champhai
64.	Zodinsanga	GP	Posted at Khuangleng
65.	Zoramthanga	GP	Posted at Khawzawl
66.	Kapzaua	GP	Posted at Kawlbem
67.	Vungzasuana	GP	Posted at Kawlbem
68.	Hrangzuala	GP	Posted at Bungzung
69.	Lalthakima	GP	Posted at Lungpho
70.	Zarzoliana	GP	Posted at Champhai PDC
71.	Zaithantluanga	GP	Posted at Biate
72.	F.Lalnithanga	GP	Posted at Khawzawl
73.	Lalbiakthanga	GP	Posted at Kawlkulh
74.	Sangnghina	GP	Posted at Khawzawl
75.	Sangliansiam	GP	Posted at Ngopa
76.	Vanlalduha	GP	Posted at Ngopa
77.	Lalthlanthanga	GP	Posted at Hliappui
78.	F.Zaithana	GP	Posted at Kawlkulh
79.	Albert Rozuala	Driver	DCSO Office Champhai

V. District Civil Supply Office, Saiha

Sl. No	Name	Designation	Nature of work/Duty allotted
1.	B.Liansiama	DCSO	DCSO Office
2.	HT Philip	HA	DCSO Office
3.	R. Lalzuiliana	SA	DCSO Office, Lunglei
4.	N. Paulunglien Gangte	ASA	Account matter
5.	Hlychho Beirapha	ASA	Account matter
6.	H. Sangkhara	LDC	Cashier
7.	Roselyn Notlia	LDC	Establishment Assistant
8.	Avijit Chowdhury	SK	As LDC
9.	Kiran Mala	SK	As LDC
10.	Liansanga	SIFCS	Kawlchaw Supply Godown
11.	KH Pawhra	SIFCS	Siaha Supply Godown
12.	V. Sawla	SIFCS	Tuipang Supply Godown
13.	VL Mawia Khenglawt	SIFCS	Chapui Supply Godown
14.	K. Lalsangluaia	SK	Chakhang Supply Centre
15.	JR Thianghlima	SK	Bualpui 'NG' Supply Centre
16.	Lalrokima	SK	Phalhrang& Vawmbuk Supply Centre
17.	TC Chozah	SK	Siata Supply Centre
18.	Jonesia	SK	Chhualung Supply Centre
19.	Lalremliana	SK	Niawhtlang Supply Centre
20.	Lalramthlenga	SK	Phura,Lungpuk, Tongkolong Supply Centre
21.	Beireisi	SK	Tuisi Supply Centre
22.	H. Vantuma	SK	Zawngling
23.	Nelson Hlychho	SK	Laki and Vahai Supply Centre
24.	Ramhlunmawii	G/P	As LDC, File dealing
25.	Ramhupa	Driver	As DCSO Driver
26.	S. Lalropuii	G/P	As LDC, File dealing
27.	K. Sanglawta	Peon	Duty DCSO Office
28.	Hrangtinthanga	G/P	As LDC Pay Bill Assistant, DCSO Office
29.	Lawmkima	G/P	As LDC K.Oil i/c DCSO Office
30.	S. Lalenpuia	G/P	As Peon, General Branch, DCSO Office
31.	Kaphmingthanga	Peon	Peon DCSO Office
32.	K. Khaihmo	Peon	Peon DCSO Office, Account Branch
33.	K. Laltanpuui	M/R	Incharge of Ration Card
34.	HC Euredice	m/r	i/c of Issue & Record Assistant
35.	Zoramthara	G/Ch	As Office Chowkidar
36.	Mahadev	G/P	Siaha Supply Godown
37.	Gubin Hasdah	G/P	Siaha Supply Godown
38.	Sunilal Hebrom	G/P	Siaha Supply Godown
39.	Butu Murmu	GP	Siaha Supply Godown
40.	Sukhu Hebrom	GP	Siaha Supply Godown
41.	K. Lallura	GP	Siaha Supply Godown
42.	Badurai Hebrom	GP	Siaha Supply Godown
43.	FC Lalchhuanthanga	GP	Tuipang Supply Godown
44.	K. Vanlalliana	GP	Laki Supply Godown
45.	F. Biekhu	GP	Chapui Supply Godown
46.	Laihra	GP	Zawngling Supply Godown
47.	Rochama	M/R	Laki Supply Godown
48.	S. Ngokhu	G/P	Vahai Supply Godown

Sl. No	Name	Designation	Nature of work/Duty allotted
49	Pahua	SM	Chakhang Supply Godown
50	Donao Solo	G/P	Chakhang Supply Godown
51.	Chiakunga	SM	Siata Supply Godown
52.	Ssangcheuva	G/P	Siata Supply Godown
53.	Beinua	G/P	Chhualung Supply Godown
54.	Pawha	G/P	Chhualung Supply Godown
55.	V. Chhachhai	M/R	Tuipang Supply Godown
56.	A. Khaichho	G/P	Niawhtlang Supply Godown
57.	Zorammmawia	GP	Kawlchaw Supply Godown
58.	S. Laili	GP	Phalhrang Supply Godown
59.	Lalthlamuana	GP	Phalhrang Supply Godown
60.	Sanghulha	GP	Vawmbuk Supply Godown
61.	B. Lalremruata	MR	Vawmbuk Supply Godown
62.	Tialhluna	GP	Bualpui 'NG' Supply Godown
63.	Rinsanga	GP	Lungpher Supply Godown
64.	Ng. Beicho	GP	Tuisi Supply Godown
65.	Boro Mardi	G/P	Phura Supply Godown
66	C. Zamao	G/P	Phura Supply Godown
67	Lalroenga	G/P	Lungpuk Supply Godown
68	Robert Lianchungnunga	G/P	Tongkolong Supply Godown
69	Beiraduakhei	M/R	Lungpuk Supply Godown
70	Joseph Lalawmpuia	M/R	Serkawr Supply Godown
71	Lalnunsanga	M/R	Kawlchaw Supply Godown
72	Karu Mardi	G/P	Siaha Supply Godown
73	Vanlalpeka	G/P	Peon at DCSO Office

VI. District Civil Supplies Office, Mamit

Sl No	Name	Designation	Nature of Work/Duly allotted
1	Pu K.Hlimthanga	DCSO	He is over all in charge of the District Office
2	Pc. Lawmkima	ADCSO	He assist the DCSO in the administration of the District Office
3	Laldawngzela	ASA	Dealt with accounting matters of DCSO's Office i.e Budgeted monthly Expenditure, Return, SSP's and bill assistant etc.
4	Joseph Vanlalzawma Ralte	ASA	He is the pay bill assistant and cashier in the District Office
5	R.Zadingluaia	SIFCS&CA	He is in charge of the stocks and stores in the District Office
6	Zonunsanga	LDC	He is in charge of the office establishment function
7	Laura Lalthanzuali	LDC	She is in charge of the office establishment function
8	Michael Zothantluanga	LDC	He is in charge of the office establishment function
9	Pc.Lalmachhuani	S.K.	She is in charge of the stocks and stores in the District Office
10	Parmawia	Porter	
11	Lalthankhuma	M.R.Driver	
12	Malsawmdawngzela	MR	
13	Lalthanfala	S/M	
14	Pc.Lalremmawia	MR	
15	Chuauhmingliana	S.K.	He is in charge of the stocks and stores in the Mamit Centre
16	Phirhmingthanga	G/CH	
17	Lallawmawma	MR	
18	Lallianpuia	MR	
19	J.C.Vanlalhriata	S.K	He is in charge of the stocks and stores in the Zawnuam Centre
20	Bidhu Nath	Porter	
21	Lalchhandama	MR	
22	Lalthlengliana	SIFCS&CA	He is in charge of the stocks and stores in the Kanhmun Centre
23	Zoramnunthara	SM	
24	Lalnunsanga	G/CH	
25	A.I.Laskar	Porter	
26	Lalhmingthanga	S.K	He is in charge of the stocks and stores under Rengdil Centre
27	Lalmuana	SM	
28	Laltlankima	MR	
29	Lalsangzuala	S.K.	He is in charge of the stocks and stores under Kawrthah Centre
30	Lalbiakzama	Porter	
31	Zomuankima	Porter	
32	C.Lalngaihawma	MR	
33	P.Lalroenga	S.K.	He is in charge of the stocks and stores under Tuipuibari Centre

Sl No	Name	Designation	Nature of Work/Duly allotted
34	Ajoy Kumar Dey	Porter	
35	Lalnunsanga	MR	
36	R.Rotluanga	S.K.	He is in charge of the stocks and stores under Kawrtethawveng/Tuidam Centre
37	Laldinmawia	MR	
38	Lalnunhlana	G/CH	
39	Hrangthangvela	SIFCS&CA	He is in charge of the stocks and stores under W.Phaileng Centre
40	Dohmingthanga	Porter	
41	Laltlanzova	MR	
42	C.Lalrinliana	MR	
43	J.Malsawmthanga	S.K.	He is in charge of the stocks and stores under Phuldungsei Centre
44	C.Sangkhuma	Porter	
45	Rozamliaana	Porter	
46	Lalfakawma Ralte	S.K.	He is in charge of the stocks and stores under Marpara/Pukzing Centre
47	Boloram Shah	Porter	
48	K.I.Laskar	Porter	
49	Zoramthangi	G/CH	
50	Vanlalnghaka	G/CH	

VII. District Civil Supplies Office, Lawngtlai.

S/N	Name	Designation	Nature of Work/ Duty allotted
1	Spencer Vanlalchhuanga	DCSO	DDO
2	Laithangpuia	IFCS	Duty at DCSO's Office Lawngtlai
3	T. Lalduhkima	IFCS	PDC Godown In-charge
4	Lianchhuma Chinzah	IFCS	FCI Godown In-charge
5	C. Vanlalhluna	SIFCS	SDC Godown Bungtlang In-charge
			Passing of Treasury Challan
			Tuipang, Maubawk, Kawlchaw and compare with
			Handing over/taking over of charge of Go-down in-charge
			Withdrawal of Security deposit of Retailers
6	J. Lalduhawma	ASA	Preparation of Budget.
			LOC and requirement of Funds.
			Checking and passing of R/T bills/Contractor bills.
			Checking and passing of MR and OE.
			Compilation of Accounts of Lti.
			Passing of Treasury Challan.
			Fixation of price of all Essential Commodities.
			Retentions of Posts.
			Matters of Go-down shortages.
			Damage Rice.
			Complaint against any contractor.
			Contractor appointment file.
Matter relating audit paper etc.			
7	C. Roliana	SK	FCI Godown
8	J.H. Lalrawngbawla	SK	SDC Tuithumhnar In-Charge
9	Rohlua	SK	SDC Godown Vaseikai In-charge
10	TC. Lalsiammawii	SK	PDC Godown
11	Lalhmingthanga I	SK	SDC Damdep In-Charge
12	S. Zoramsanga	SK	DCSO Office

S/N	Name	Designation	Nature of Work/ Duty allotted
13	Biaksiami	LDC	File index Register/Staff Position Register.
			Govt. Notification / Circular etc.
			Staff meetings / Press conference etc.
			Maintenance of service book of all staff.
			ACR of MR & Group C&D.
			All other matters involving establishment matters.
			She will function as Cashier.
			Drawing / Disbursing of all kinds of Bills.
			Preparation of Pay Bills/GPF Adv/withdrawal
			Maintenance of GPF Accounts of all staff.
			All other saving schemes.
			Indent of stationary and maintenance of Register thereof.
			Pension cases.
			Quarterly return of Pension cases.
Quarterly return of Staff Position.			
Work distribution file/stationary file.			
Appointment/Transfer/Leave etc of all Staffs			
14	T. Zasangi	LDC	Preparation and distribution of all kinds of Ration Cards ie, APL/BPL/AAY and maintenance of the accounts thereof.
			Matters relating to Tender and Appointment of FP Shopof Rice / Sugar and SK Oil.
			Issue and maintenance of accounts of special permits of Rice/Sugar/SK Oil for VIPs. As these involve finance no otherstaff will issue these without specific order of the DCSO.
			Maintenance of attendance register and matters regarding disciplinary matters of staff.
			Security deposits/Licence fee in respect
15	B.K. Rai	S/M	PDC Godown (Scaleman)
16	Laltlana	S/M	Bungtlang Centre (Scaleman)
17	Alpha Omega	G/Ch	DCSO Office Peon
18	Lalkhawngaiha	G/Ch	Vaseikai Centre (chowkider)
19	C. Lawmsanga	G/Ch	DCSO Office Lawngtlai (chowkider)
20	C. Lalthlamuana	G/Ch	Diltlang Centre (Chowkider)
21	Vanlalchhuana	G/P	Diltlang Centre (Porter)
22	Hrakhy	G/P	Vathuampui Centre (Porter)
23	N. Lalpianmawia	G/P	PDC Godown (Porter)
24	Lalmangaihawia	G/P	PDC Godown (Porter)
25	A.S. Barbhuiya	G/P	DCSO Office Lawngtlai (Porter)
26	R.T Sawma	G/P	Damdep Centre (Porter)

S/N	Name	Designation	Nature of Work/ Duty allotted
27	Vanhnuaithanga	G/P	Vaseikai Centre (Porter)
28	Sungtlingliani	G/P	PDC Godown (Porter)
29	Lalmachhuana	G/P	PDC Godown (Porter)
30	Lalfela	G/P	Tuithumhnar Centre (Porter)
31	Tumsanga	G/P	PDC Godown (Porter)
32	B. Vanlalmazlova	G/P	Bungtlang Centre (Porter)
33	R. Vanlalpeka	G/P	PDC Godown (Porter)
34	Sangthangpuia Chinzah	G/P	FCI Godown (Porter)
35	Vanlaldiki Chinzah	Gr 'D' (MR)	Maintenance of Treasury challan accounts/challan. Maintenance of despatch register of foodstuffs dispatched from Lawngtlai PDC to other centers. Typing of office correspondences. Preparation of D.O. for APL/BPL/AAY. Maintenance of Receipt / Issue Register. Maintenance of Log Book & Dak Book, Office Guard File.
36	T. Lalhriatpuia	Gr 'D' (MR)	Computer Operator
37	H. Lianchungnunga	Gr 'D' (MR)	DCSO Office Peon
38	Ramdinthara	Gr 'D' (MR)	Vathuampui Centre (Porter)
39	Zonunsanga	Gr 'D' (MR)	Tuithumhnar Centre (Porter)
40	Laldinpuia	Gr 'D' (MR)	Vaseikai Centre (Porter)

VII. Guwahati, Mizoram House

SI No.	Name	Designation	Nature of Work/ Duty Allotted
1	Lalzidingi	Assistant	Dealing of establishment file
2	Bhoben Roy	Cook	Duty performed as Room Waiter
3	Mahesh Nath	Room Bearer	Room Waiter
4	Tilak Barman	Sweeper	Sweeper

PART – III

PROCEDURES, FOLLOWED IN THE DECISION MAKING PROCESS, INCLUDING CHANNELS OF SUPERVISION

Item (iii) of Section 4, Sub-Section (1) (b) of the RTI Act, 2005.

3. The Procedure followed in the decision making, including channels of Supervision.

3.A. DIRECTORATE : As mentioned at Part – II above, all officers are entrusted specific subjects to assist Director for execution of the Govt. policies concerning the department.

(i) Receipt of Daks and its disposal : All daks, may also called 'Correspondences' coming from outside the directorate are received together in the General Establishment Branch under the supervision of Superintendent. The entire daks are sorted out in officer wise and put up together to the Director first in daks pad and returned to the dealing hand through each of the officers concerned. After gone thoroughly to the new received of daks by Director and concerned officers, the dealing hand diarise the daks and distributed to the concerned dealing hand for its disposal.

(ii) Disposal of daks : The department followed the functional filling system of the Central Government. Accordingly, all files are numbered and dated at the appropriate major subject heads and minor subject heads.

The daks received by the concerned dealing hand is properly docketed in the concerned file and put up to the immediate officer, that is, Superintendents and Accounts Officer or Superintendent of Accounts as the case may be, with providing rules, regulations, precedence, etc. if arises.

(iii) Final Decision : After providing all necessary information right from the dealing hand concerned the Programme Officers concerned have further examine the cases for final decision to be made by the Director. After making decision or if require further action to be taken, each of the concerned officer executed on behalf of the Director.

(iv) Generally, in actual practices, all officers other than the Director have no any powers of its own. But for efficient and immediate disposal of the cases pertaining to the department concerned as provided in the Government of Mizoram (Allocation of Business) Rules, 1987, the Director delegated powers to the particular officers who can decide such cases at their own level in the public interest. Even in such delegated powers, some cases are requiring executive policy decision on general management and administration, the matter are brought to the Director by subordinate officers for making appropriate final decisions.

(a) Jt. Director (Admn) : As already mentioned at 1.B (2) *ibid*, this post is being manned by MCS Officer in the grade of Junior Administrative Grade. In its nature, he have the responsibilities to assist the Director for making decision in the matter relating all service matters of the employees under the department. But in the event of normal routine work or in minor cases he may sometimes decide the cases at his own level for the interest of the department. He also exercise control both in regard to the dispatch of business and maintenance of discipline of all branches. In fact, all requires information relating to the establishment and administration matters are provided by the General Establishment Branch.

He is also entrusted to assist the Director in matter relating to maintenance and detailment of department light vehicles. With the knowledge of Director, he is authorized to detail the vehicle for official tour and issue of POL etc.

(b) Jt. Director (S) : Within the work allotted to him as indicated at 2.A (2) (b) *ibid*, he has discretion to instruct and supervise the subordinate offices and staff of directorate. He is also authorized to issue LPG, POL and Wheat Bran etc. to the public on special permit system.

(c) Jt. Director (M) : Within the work allotted to him as indicated at 2 (A) (2) (c) *ibid*, he has the discretion to dispatch foodstuff to various centres as per their requirement and detailment of HMTV to carry such foodstuff. He is also authorized to issue foodstuff to the public on special permit system.

PART – IV

The norms set by the Department for the discharge of the function :

As statutory norms set by the Government of Mizoram in general and the administrative department in particulars are complied with for the discharge of the departmental function.

For general disposal of the Government policies issued by DP&AR, GAD, Law & Judicial, Finance Department etc. in time to time are followed in letter and spirit.

In particular, the department has also set up some norms for discharging the departmental function which will be elaborated in the following Part.

The Director is over-all authority of the Department. Every Officer assisted him, by providing ideas, relevant rules, regulations and precedences etc. for the disposal of the Department business.

In the event of the Director being out of station due to performances of official duties, the Director normally handed over the charge to the Jt. Director (Admn).

(vi) The Procedure followd in the financial sanction :

Delegation of Financial Power Rules :

The Financial sanctioning authority of the department is vested in the hand of the Director. But, as provided under DFPR, the Director has delegated the powers of Drawing and Disbursement Authority to the Dy. Director (Accts.). Dy. Director (M) and Dy. Director (G) for a particular head of accounts.

As such, each of the above Dy. Directors has signed in the endorsement of such sanctions in their autorised head of operations.

After following all procedures, the dealing hand in the Branch or Section, proposal for financial sanction is put-up in the relevant files and the concerned officers examine the authencity of such proposals and put forward to the Director for sanctions.

The Cashier, after authenticated in the body of such bills or otherwise in the require manner by the concerned officer, and sanctioned by the Director, such financial sanctions are drawn and disbursed to the rightful receipient with the knowledge of the Drawing and Disbursing Officer.

PART –V

A Statement of the categories of documents that are held by it or under its control
Items (v) and (vi) of Section 4-1(b)

SI No	Category of the documents	Name of the documents	Held/under control
1	Budget	Demand for Grant for the Deptt. Of FCS&CA	Dy. Director (Accts)
2	Recruitment Rules	Recruitment Rules of different Categories od posts.	Dy. Director (G)
3	Orders relating to Motor Spirit and Oil	Motor Spirit & High Speed Diesel (Prevention of Mal-practices in supply and Distribution) Order 1990	Jt. Director (S)
4	Orders relating to Service Matters, etc.	Appointment, Promotion, Transfer, etc. Orders	Dy. Director (Admn)
5	Orders relating to works	Appointment of works supervisor	Dy. Director (G)
6	Publications	Publication for Advertisement	Dy. Director (Admn)
7	Tender forms	Tender forms for carriage of food stuff. Agreements.	Jt. Director (M)
8	Audit	Audits paras with its replied therof.	Dy. Director (Accts)
9	Targetted Public Distribution Scheme	Instruction, Orders, guidelines, etc. on TPDS received from Govt. of India. Selected lists of BPL, AAY, etc.	Jt. Director (M)
10	Selection of carrying contractors	List of carrying contractors. Lists of carrying contractors District Routes.	Concerned DCSO
11	Manual	Manual on the Deptt. Of FCS&CA	All Jt. Directors
12	Price Fixation	1) Food Stuff 2) POL etc.	Jt. Director (M) Jt. Director (S)

PART – VI

Boards Committees and other Bodies

Items (vii) and (viii) of Section 4.1(b)

(A) Consultative Committee :

Chairman	:	Pu John Rotluangliana, Hon'ble Minister
Vice Chairman	:	Pu T.T. Zothansanga, Hon'ble Parliamentary Secretary
Members	:	1) Pu Lalthanliana, MLA 2) Pu K. Sangthuama, MLA 3) Pu P.C. Zoramsangliana, MLA 4) Dr. Ngurdingliana, MLA 5) Pu John Siamkunga, MLA
Member Secretary	:	Secretary of the concerned Department
Ex-Officio Member	:	Secretary, PAD or his representative not below the rank of Joint Secretary.

(B) Vigilance Committees : The Vigilance Committees are set up at State, District and Block levels to oversee the scheme under FCS&CA Department. The Committees, at their respective jurisdiction have to review quarterly overall functioning of TPDS scheme, visiting Fair Price Shops, meet beneficiaries of the schemes and if and when, the Committee faced problems which cannot be solved at their level or warrant attention of the higher authority should be brought to the notice of their next higher committee or authority –

(i) State Level Vigilance Committee on TPDS

1) Minister, FCS&CA Deptt.	-	Chairman
2) Parliamentary Secretary, FCS&CA	-	Vice Chairman
3) Commissioner/Secretary FCS&CA Deptt.	-	Member Secretary
4) Secretary, School Education Department	-	Member
5) Secretary, Social Welfare Department	-	Member
6) Commissioner for Persons with Disabilities (PWD)	-	Member
7) Director, FCS&CA	-	Member
8) One representative each from all recognised Political Parties-	-	Member
9) President, MCU Hqrs. (or his representative)	-	Member
10) President, CYMA (or his representative)	-	Member
11) President, MHIP Hqrs. (or his representative)	-	Member
12) President, MUP Hqrs. (or his representative)	-	Member

(ii) District Level Vigilance Committee on TPDS

1) Deputy Commissioner of the District	-	Chairman
2) DCSO of the District	-	Member Secretary
3) SDO (Sadar) of the District	-	Member
4) District Education Officer of the District	-	Member
5) District Social Welfare Officer of the District	-	Member
6) President, District Consumer Union or his representative	-	Member
7) President or his representative of YMA/YLA/MTP/YCA within the District	-	Member
8) President or his representative of MHIP/MCHP/LWA within the District	-	Member
9) President or his representative of MUP within the District	-	Member
10) One prominent person to be nominated by the Govt.	-	Member
11) All BDOs within the District	-	Member
12) All Sitting MLAs within the District	-	Ex-Officio Member

(iii) Block Level Vigilance Committee on TPDS

- | | | |
|---|---|------------------|
| 1) BDO within the Block | - | Chairman |
| 2) Inspector, FCS&CA who is posted in the Block Hqrs.
Or a senior most Inspector posted within the Block | - | Member Secretary |
| 3) All President, Village Council / Chairman, Local Council
within the Block | - | Member |
| 4) Sub-Divisional Education Officer within the Block | - | Member |
| 5) Child Development Project Officer within the Block | - | Member |
| 6) All Centre Incharge of Supply Godowns within the Block | - | Member |
| 7) One prominent citizen to be nominated by the Govt. | - | Member |

(C) Departmental Purchase & Advisory Boards : As per Finance Department Office Memorandum No. FMC.17/88/317/91. The DPAB is constituted as under :

- | | | |
|--|---|---------------------------------------|
| (i) Secretary to the Govt. of Mizoram FCS&CA | - | Chairman |
| (ii) DFCS&CA | - | Member Secretary |
| (iii) Representative of L & J Deptt. | - | Member (Not below
the rank of D/D) |
| (iv) Representative of Finance Deptt. | - | Member |
| (v) Deputy Director (Acct.) | - | Member |

(D) Scrutinising Committee for Compassionate Appointment : As per Finance Department Office Memorandum No. A.28022/1/96-F-Est. dt. 18.10.2001, the department constituted a scrutinising Committee for Compassionate Appointment to make recommendation for appointment on compassionate ground for those who applied thereof as under :-

- | | | |
|-------------------------------|---|------------------|
| (i) Director, FCS&CA | - | Chairman |
| (ii) Addl. Director | - | Member |
| (iii) Jt. Director (Admn.) | - | Member |
| (iii) Deputy Director (Admn.) | - | Member |
| (iv) Superintendent (Admn.) | - | Member Secretary |
| (v) Dealing Assistant | - | Member |

(E) Committee for ACP Scheme : To implement Assured Career Progression Scheme for Group 'B' under the Department, a committee has been constituted and meeting is required to be convened twice a year, as under :-

- | | | |
|------------------------------|---|------------------|
| (i) Director, FCS&CA Deptt. | - | Chairman |
| (ii) Representative of DP&AR | - | Member |
| (iii) Director FCS&CA Deptt. | - | Member Secretary |

To implement Assured Career Progression Scheme for Group 'C' & 'D' under the Department, a committee has been constituted and meeting is required to be convened twice a year, as under :-

- | | | |
|--|---|------------------|
| (i) Director, FCS&CA Deptt. | - | Chairman |
| (ii) Representative of DP&AR | - | Member |
| (iii) Dy. Director (Admn.) FCS&CA Deptt. | - | Member Secretary |

PART – VII
DIRECTORY OF OFFICERS AND EMPLOYEES
A. DIRECTORATE, EPABX – 0389 – 2325261
FAX – 0389 -2321035

S/N	Name	Designation	Address	Telephone Office	Mobile No. Residence
1.	R. Lalramnghaka	Director	Electric Veng	2322872	9436371641
2.	C. Zasanga	Addl. Director	Upper Kanan	2323141	9436145174
3.	Dr.Andrew H.Vanlaldika	Jt. Director	Ramhlun	2323181	9436375129
4.	H.C. Zonunthara	Dy. Director	Vaivakawn	2325663	9436152482
5.	Robert C. Lalhmangaiha	Dy.Dir (G)	Chawnpui	2324340	9485114964
6.	Lalremtluangi	Dy.Dir(Acct)	Dawrpui	2324335	9436156150
7.	Thangrosiama	Dy.Director	Chanmari	2316178	9436195733
8.	V.L. Biakhnuna	Supdt.(Admn)	Republic	2316177	9436152883
9.	Lalremruata	Supdt.	Chanmari 'W'	2310377	9862725122
10.	Hmingthanzauva Pachuau	Acct. Officer	Ramthar		8414895307
11.	Saikhuma	Supdt. of Accts	Kanan		9436152107
12.	Laldingliani	Supdt. of Accts	Bungkawn Vengthar		9436146353
13.	Zomuani	Supdt. of Accts	Chaltlang		9436152289
14.	Sangtluangi	Supdt. of Accts	Republic		9862843254
15.	Laldingliani	Supdt. of Accts	Bungkawn Vengthar		9436146353
16.	Lalrinsanga	Inspector	Armed Veng		9436141703
17.	V.L. Malsawmi	ASA	Mission Vengthlang		9436374900
18.	Lalrammawia	ASA	Vaivakawn		9436961229
19.	Zohmingthangi	ASA	Mission Vengthlang		9436152109
20.	Engzuali Ralte	ASA	Ramhlun 'N'		9612165633
21.	Vanlalhruaii	ASA	Mission Veng		9436153184
22.	Lalbiakkima	ASA	Zemabawk		9436150250
23.	D. Lalbiakmawia	ASA	Model Veng		9436157357
24.	Lalsawmliani	ASA	Bethlehem V/T		8794509328
25.	Ramengmawia	ASA	ITI		9862551930
26.	Lalthangliani	ASA	Mission Veng		8415854439
27.	Biaknunchami	ASA	Tuikual		9436159244
28.	Lalzarzova – I	ASA	Bethlehem		9436141920
29.	Lalrinawma – II	ASA	Thakthing		9436361235
30.	Lalzarzova – II	ASA	Chaltlang		9612477211
31.	Lalremtluanga	ASA	Zemabawk		9436361753
32.	P.Zothankimi	Assistant	Mission Veng		9436142894
33.	Zosangliani	Assistant	Tuikhuahtlang		9862017167
34.	H. Lalrinsangi	Assistant	Upper Republic		9436199175
35.	P.C. Lalmalsawmi	Assistant	Bethlehem V/T		9612516517
36.	F. Lalsawmliana	J.E.	Kulikawn		9436362413
37.	R. Lalbiakkima	Steno – II	Ramhlun		9862758012
38.	Lalremsangi	UDC	Armed veng 'S'		9615720959
39.	Khawlkungi	UDC	Zemabawk		9856932749
40.	J. Zohmingliani	UDC	Kulikawn		8974435204
41.	V. Lalthakimi	UDC	Upper Republic		9436351850
42.	Lalsawmliani	UDC	Nursery		9856736014
43.	Lalbiakliani	UDC	Dawrpui Vengthar		9612229825
44.	F. Lalnunluanga	S.A	Republic		9612903876
45.	Lalsawmliani	SIFCS	Khatla		9402590795
46.	Lalnghakliani Sailo	SIFCS	Ramhlun 'S'		9612166501
47.	J. Vanlalchhuanga	IFCS	Ramhlun North		8974638175
48.	R. Lalrodingi	UDC	Chanmari 'W'		9436353670

S/N	Name	Designation	Address	Telephone	Mobile No.
49.	C. Zoramthangi	LDC	Venghlui		9862383562
50.	H. Lalrinliani	LDC	Luangmual Complex		
51.	Lalmuanpuii	LDC	Bungkawn Vengthar		9856579375
52.	J. Lalkailiana	LDC	College Veng		9436362247
53.	Malsawmtluangi	LDC	Chawnpui		9862530544
54.	Laltleipuii	LDC	Kanan		9774093804
55.	M.S. Thuamluaia	LDC	Bawngkawn		9862358549
56.	Tlauliana	LDC	Kulikawn		9862055593
57.	R. Vanlalchhuani	Store Keeper	Kanan		9862373729
58.	T. Lalthanpuii	Store Keeper	Bawngkawn		9436151013
59.	Vanlalmuani	Store Keeper	Model Veng		9436199222
60.	Lalhmuaakkimi	Store Keeper	Tuikual		9436155323
61.	PB Malsawmtluangi	Store Keeper	Chawlhmun		9612235289
62.	PC Thanbanglova	Store Keeper	Sihphir		9436158194
63.	Lalngenmawii	Store Keeper	College Veng		9436351893
64.	F. Lalremruata	Store Keeper	Ramhlun Venglai		9862577310
65.	Vanlalmangaihfaunvela	Store Keeper	Chaltlang		9436379677
66.	Ngurthangmawii	Store Keeper	Bungkawn		9862344071
67.	PH Vanlalmuana	Store Keeper	Dinthar		9862902741
68.	Remkunga	Driver	Kulikawn		9436153469
69.	Lalnunsanga	Driver	Chaltlang		9862026067
70.	H. Lalbiaksanga	Driver	Tuikual		9612082294
71.	Vanlalchhandama	Driver	Mission Veng		9436376264
72.	Zalianmanga	Driver	Vaivakawn		9436159220
73.	Zothankima	Driver	Mission Veng		9862371043
74.	Zamvela	Driver	Maubawk		8575894907
75.	Lalhmingschhuan	Driver	Venghlui		9862303038
76.	Lalnuna	Driver	Falkland		9436198818
77.	Zoliana	Driver	Tuikhuahtlang		9612335197
78.	Lalrinfela	Driver	Tuikual		8575180806
79.	S. Lalfakzuala	Driver	Govt. Complex		9862900487
80.	Lalenga	Sirdar			9856879723
81.	Laltanpuia –I	Sirdar	Ramhlun 'S'		9862383565
82.	Thandailova	Peon	Durtlang		9436351730
83.	Lalchhandama	Peon	Kulikawn		9436196301
84.	B. Malsawma	Peon	Kulikawn		9436352675
85.	Lalchhuanawma	Peon	Bethlehem VT		9612587133
86.	Zothanpuia	Peon	Bawngkawn		9862382468
87.	Thanglura	Peon	ITI		7085265741
88.	Lalrambuatsaiha	Peon	Durtlang		8731099981
89.	Lalrintluangi	Peon	ITI		8974670101
90.	T. Lalvulmawii	Peon	Chawnpui		9863189788
91.	Lalsangzela	Peon	Tuikual		9862359627
92.	C. Hlawseii	Peon	Republic		9612289979
93.	C. Lalramnghaki	Peon	Thakthing tlang		9612864749
94.	K. Hauzika	Chowkider (O)	Chawnpui		9436158711
95.	HF Hrangkima	Chowkider (O)	Tuikual		9862717358
96.	Kapchhuanga	Chowkider (O)	Bungkawn		9436381532
97.	Lalhmunthanga	Chowkider (G)	Zuangtui		
98.	Lalmuanpuia	Chowkider (G)	Armed Veng		9862552748
99.	Kamdingliana	Chowkider (G)	Zuangtui		9862315788
100.	T. Hrilliana	Chowkider (G)	Model Veng		9774638492

S/N	Name	Designation	Address	Telephone	Mobile No
101	H. Zoliana	Chowkider (G)	Ramhlun		9612081737
102	Zanuari	Chowkider (G)	Bungkawn		9856737274
103	Laldinmawia	Chowkider (G)	Tuikual 'S'		9856301506
104	RC Vanlalhluna	Chowkider (G)	ITI		9862357654
105	R. Vanlalrenga	Chowkider (G)	Electric veng		9862384273
106	Malsawmtluanga	Chowkider (G)	Kanan		8414092199
107	Hmachhuana	S/M	Zuangtui		8575143437
108	Tek Bahadur	S/M	Zuangtui		9862509583
109	Malsawmsanga	S/M	Tuikhuahtlang		9436197951
110	Lallianzuala	S/M	Chawnpui		9862728045
111	V. Pauzamanga	S/M	Kanan		9436960909
112	Lalkiamlova	S/M	Tuikual North		9862310790
113	R. Zothanpuia	S/M	Salem Veng		9612366488
114	Ralkapthanga Pachuau	S/M	Maubawk		
115	Badal Kumar Maity	Porter	Kolkata		9007478184
116	Deepak Kumar	Porter	Zotlang		8974860541
117	Chinmoy Sharma	Porter			
118	Chuangkima	Porter	Ramhlun Vengthar		
119	Thangchhanliana	Porter	Bethlehem VT		9612513644
120	Vanlalmuana	Porter	Ramhlun		9856960667
121	Morak	Porter	Zuangtui		
122	R. Thangkima	Porter	Tuikual 'S'		9612369028
123	Lalthakima	Porter	Muanna Veng		9856687631
124	Paudawla	Porter	Ramthar		9612319588
125	Kharka Bahadur	Porter	Maubawk		9774220357
126	Elizabeth	Porter	Kulikawn		
127	Syam Sonar	Porter	Khatla		
128	Ramdina	Porter	Armed Veng 'S'		9774833297
129	Laltanpuia –II	Porter			
130	Chawngchhingpuii	Porter	Zotlang		9612162470
131	Vanlalvuana	Porter	Bethlehem VT		8575774953
132	Vanlaltluanga	Porter	Zemabawk		9436159419
133	Abdul Rahman	Porter	Upper Republic		9436702864
134	Zakhumi	Porter	Bethlehem VT		9612191179
135	Lalzampuii	Porter	Kulikawn		8974588504
136	C. Dengzami	Porter	Tlangnuam		9436153182
137	R. Lalremmawii	Porter	Kanan		9774392297
138	Lalmangaihi	Porter	Venghlui		9436197831
139	C. Lalmalsawmi	Porter	Kulikawn		9612376812
140	Balle Baske	Porter	Tuikhuahtlang		
141	Saihmingthangi	Porter			
142	F. Lalbiaksangi	Porter	Zemabawk		
143	Lallawmawma	Porter	Zemabawk		9862374793
144	H. Vanlalnghaka	Porter	Zuangtui		
145	Thangmawizuala	Porter	Colleg e Veng		9862380049
146	G. Singkhanlal	Porter	Zotlang		9612775243
147	R. Sangchhungi	Porter	Republic		9856567038
148	Sibu Sonar	Porter	Tuikual 'A'		9615820113
149	K. Lalrinkhuma	Porter	Hlimen		9862713778
150	V. Biakchungnunga	Porter	Ramhlun Venglai		9862385492
151	Dengkunga	Porter	Tuikual		9862976887
152	Biakmuanpuia	Porter	Zemabawk		8014698981

B. DISTRICT OFFICES

1. District Civil Supply Office, 'W' Aizawl

Sl. No.	Name	Designation	Address	Telephone Office	Mobile No. Residence
1	2	3	4	5	6
1	Lalkunga Sailo	DCSO	Ramhlun South	2333218	2341620 / 9862214248
2	R. Sanghnuna	ADCSD	Khatla		2333828 / 9436146071
3	Zodinpuii	A.O	Mission Veng		2300725 / 9436197328
4	C. Zodinpuii	S.A	Lunglei		-
5	Lalhmuakliana	IFCS	Armed Veng		2323193 / 9436195545
6	Lalzarliani	H.A	Kulikawn		2325355 / 9436198020
7	Ramngaihzuala	ASA	ITI Mualpui Road		9436190280
8	Lalmangaihi	ASA	Zarkawt		9436154787
9	Zoparmawii	SIFCS	Khatla South		2339265 / 9774781099
10	Lucy Zaithuami	UDC	Chanmari West		9436361699
11	C. Rengthuampuii	LDC	Saron Veng		9436199862
12	Laltanpuii Hmar	LDC	Tuikual South		9862431761
13	Lalchhuanawmi	SK	Chaltlang		9436197451
14	Lalchhanchhuaha	SK	Chaltlang		9862362555
15	Lalmachhuana	SK	Vaivakawn		9131826033
16	Sapthlengliana	SK	Lengpui		9612310795
17	R.S. Lalrinmawia	SK	Bungkawn		9436963756
18	S.T. Hmingmawia	SK	Mission Vengthlang		9436149269
19	F. Zoramthara	Peon	Hlimen		9612893159
20	K. Sangthanga	G/ch	Edentharr		9862516522
21	Lalrinawma	O/ch	Tuikual South		9862124494
22	Liankhumi	G/ch	Tuikual North		8794015010
23	C. Lalchhuanawma	G.P	Tuikual North		9774237699
24	R. Ramchullovi	G.P	Tuikual South		9862378475
25	R. Lalnunmawii	S.M	Chanmari		9862376044
26	Lalbiaksanga	G.P	Ramhlun South		9862901488
27	P.C. Laldingluaia	Peon	Kulikawn		9862537971 / 9436457486
28	Varsangkimi	G.P	Tlangnuam		8794798127
29	Lalropara	S.M	Tuithiang Veng		9862376432
30	Lalramluaha	G.P	Chawlhmun		9862790580
31	Kapzauva	G.P	Kapzauva		9615269709

Sl. No.	Name	Designation	Address	Telephone Office	Mobile No. Residence
KHAWRIHNIM CENTRE					
1	Lallianruala	SK	Chawnpui		9436142328
2	Lalrawngbawla	G/ch	Khawrihnim		9862979841
3	Zoramchhana	G.P	Mission Veng		-
KANGHMUN CENTRE					
1	Khatlianthuama	SK	Luangmual		9615881982
2	Lalhmingliana	G.P	Maubawk		9862023116
3	Laldinpuia	G.P	Tuikual 'A'		9863622456
AIBAWK PDC					
1	R. Hmingsangliana	IFCS	Chawnpui		9436197502
2	Lalmalsawmi	SK	Tuikual 'A'		9439197988
3	K. Lalrosanga	G.P	Aibawk		9856584334
4	Biakngheta	G.P	Tachhip		8014226113
5	Malsawma	G.P	Vaivakawn		9862362159
REIEK CENTRE					
1	C. Zothanpari	SK	Falkawn		9862598358
2	Rengchuana	G.P	Reiek		8974208790
3	Laldawngliana	G.P	Zuangtui		9615451107
SIALSUK CENTRE					
1	H. Lalduhawma	SK	Bethlehem Vengthlang		2326017 / 8730922240
2	Lalchawiliana	G/ch	Sialsuk		8974616902
3	Laltluanga	S.M	Sialsuk		8730094055
4	C. Zothanmawii	G/ch	Bethlehem		8257948655
DARLUNG CENTRE					
1	Lalbiaktluanga	SK	Bethlehem Vengthlang		9436150463
2	Lalsangliana	G/ch	Mission Veng		8974669939
HMUIFANG CENTRE					
1	Lalngurliani	SK	Kulikawn		9436354623
2	Vanparlawma	G/ch	Hmuifang		9862315945

RAWPUICHHIP CENTRE

Sl. No.	Name	Designation	Address	Telephone Office	Mobile No. Residence
1	R. Laldawngliana	SK	Model Veng		8131984502 / 9436366262
2	Lalbiakdika	G/ch	Rawpuichhip		8974138185

2. (a) District Civil Supply Office, 'E' Aizawl

S/N	Name	Designation	Address	Telephone Office	Mobile No. Residence
1	Malsawmtluanga	DCSO	Chaltlang	2326337	9862689748
2	Lalthanmawia	ADCSSO	Tuikual		9436159263
3	Saikhuma	AO	Kanan		9436152107
4	C. Lalremruata	SA	Chaltlang		9436145177
5	Motilal Chhetri	IFCS	Durtlang		8732078480
6	Zairemkima	- do -	Saitual		9862225038
7	B. Chalchamliana	HA	Venghlu		9436195957
8	K. Lalbiakengi	ASA	Electric		9436154626
9	Lalthansangi	- do -	Mission Veng		9436140705
10	Denghmingliani	- do -	Electric		9436156262
11	Lallianzuala	- do -	Dawrpui Vengthar		9862562428
12	Zoawithanga	SIFCS	Phullen		9436365699
13	J. Thantluanga	- do -	Sakawrdai		8131059547
14	Vanlalchhuana	- do -	Chaltlang		8575674256
15	Rochhumi	- do -	Republic		9412586057
16	Lalfeli	- do -	Durtlang		961268049
17	Vanlalchhuangi	- do -	Saikhamakawn		9862564975
18	F. Lalthanmawii	UDC	Kulikawn		9862358169
19	Vanlalchhani	LDC	Chaltlang		9436150243
20	Lalramchuan	- do -	Saron		9612064166
21	Zohmingliana	Driver	Chaltlang		9862067072
22	Thanghmingliana	Peon	Kanan		9862842458
23	Lalramhluna	SK	Darlawn		96121616264
24	Thuamlia	- do -	Khawruhlian		9863189751
25	Vanlalhruaia pachuau	- do -	Ratu		9436191074
26	Lalremmawii	- do -	Saitual		9862362159
27	Velkima	- do -	Vanbawng		9774324642
28	L. Thangkhanmanga	- do -	Ramhlun North		9436783993
29	Lalhmingliana	- do -	Suangpuilawn		8414012215
30	S.P. Zamuana	- do -	Chhinga Veng		9856736115
31	Hualthanchhuma	- do -	Zohmun		9856862393
32	K. Zothanmawii	- do -	Upper Republic		8014246722
33	M. Zohmingliani	- do -	College Veng		9436199644
34	Lalthanthuama	- do -	Khawlian		9863758378
35	Zohrangzuala	- do -	Saitual		
36	Lalbiaksanga	- do -	N. Vervek		9856529380
37	Vanlalchama	- do -	Chaltlang		9863142405
38	Zoramdinthara	- do -	Zohmun		8575539703
39	Theresa Z. Hmar	- do -	Phuaijuang		9436365016
40	Lalthanmawia	G/ch	Khawruhlian		9863527586
41	Thangntura Sailo	- do -	Khawruhlian		9863593096
42	Chawngthuama	- do -	Ramhlun N		8974132296
43	Rosangliana	- do -	Darlawn		
44	Chharhmingthanga	- do -	Saitual		8974170589
45	Roenga	- do -	Vaivakawn		96123208595
46	Sapchhunga	- do -	Darlawn		8014664701
47	Lalthuthlunga	- do -	N. Vervek		8575900412
48	Khawlkunga	- do -	Vanbawng		9485077789
49	Lalnuntlinga	- do -	Electric		9862824009

S/N	Name	Designation	Address	Telephone Office	Mobile No. Residence
50	Tawnkima	- do -	Saitual		9856665420
51	Vanhnuaitanga	S/M	Phuaibuang		
52	Lalzuiliana	- do -	Ramthar		9862334778
53	Rinkima	- do -	Darlawn		9615650114
54	M.S. Dawngliana	- do -	Saitual		9612550730
55	Rosangzuala	- do -	Ramhlun South		8014113281
56	Lalsanga-II	Porter	Vanbawng		9863707592
57	Liandawla	- do -	Ratu		
58	Vaingailova	- do -	Sakawrdai		8974637438
59	Zoliana	- do -	Republic		9612329203
60	Lalramhluna	- do -	Saitual		9862498376
61	Laltanpuia-II	- do -	Zohmun		8975146322
62	Laltanpuia-III	- do -	Phuaibuang		8259942781
63	Liankanglova	- do -	Khawruhlian		9615949827
64	Lalbiaksanga-I	- do -	Venghlui		9862841299
65	VL Hlutthanga	- do -	Chhinga Veng		8413062516
66	R.T. Kima	- do -	Sakawrdai		8575301225
67	H.Lalmalswma	- do -	Saitual		8575301225
68	Rinvuana	- do -	Venghlui		8014474469
69	J. Vanlallawma	- do -	College Veng		9436362276
70	Lalremtluanga	- do -	Khawlian		
71	Chawimawithangi	- do -	Ramhlun Vengthar		9874743302
72	Lalzingpuii	- do -	Zohmun		8731873686
73	Albert Lalrintluanga	M.R	Ramhlun South		9436190520
74	Lalrinhlua	- do -	Darlawn		8575403864
75	Lalmuankima	- do -	Khawlian		
76	Vanlalsawma	- do -	Suangpuilawn		9863799765
77	Vanlalthlamuana	- do -	Khawruhlian		8415848955
78	F. Lalchamliana	- do -	Phullen		9856547286
79	Lalfamkima	- do -	Saitual		
80	C. Lalnunmawia	- do -	N. Vervek		
81	Lalbiakmawia	- do -	Vanbawng		9402551063
82	R. Lalremkima	- do -	Ratu		9862353336
83	Michael Zodinpuia	- do -	Edentharr		9612110792
84	Lalramrawngbawla	- do -	Suangpuilawn		

2. (b) District Civil Supply Office, Serchhip.

Sl. No.	Name	Designation	Address	Telephone Office	Mobile No. Residence
1	2	3	4	5	6
1	Rosangmawia	DCSO	DCSO Office	(03838) 225152	9436158549
2	Vanlalhriata	IFCS	Serchhip PDC		8131989127
3	Lalremliana	ASA	DCSO Office		9436354514
4	Lalrinawma	ASA	DCSO Office		9436198439
5	Sangzela	SIFCS	Thenzawl SDC		9436146017
6	Lalawmawia	SIFCS	N.Vanlaiphai Centre		8416078662
7	RL.Phena	SIFCS	DCSO Office		9436762960
8	B. Lalbiakvela	SIFCS	E. Lungdar Centre		9863130996
9	H. Lalmalsawmi	LDC	DCSO Office		9436190264
10	V.Lalromawii	LDC	DCSO Office		9862576607
11	Rodingliana	Driver	DCSO Office		9862843101
12	H.Chhawnthanga	S.K.	DCSO Office		8131821483
13	Laldinchami	Peon	DCSO Office		9612798294
14	Melody Lalremruati	G.Ch.	DCSO Office		9862363862
15	Zosanga	G.P.	DCSO Office		9402112909
16	R.Lalrohluna	S.K.	Chhingchhip Centre		9436145275
17	J.Lalrotluanga	S.K.	Cherhlun Centre		9436759065
18	Lalramchhana	S.K.	Thingsai Centre		9402179530
19	JH.Zarzoliana	S.K.	Khawlailung Centre		9436453895
20	Vanlalchhuana - II	S.K.	Thenhlun Centre		9402145963
21	Vanlaltlana	S.K.	Bunghmun Centre		9436592179
22	Lianzela	S.K.	Chhipphir Centre		8730095761
23	Lalthlamuani	S.K.	Serchhip PDC		9612639859
24	Varthanmawia	S.M.	Chhingchhip Centre		8414960473
25	James Hmingthangzuala	G.Ch.	N.Vanlaiphai Centre		9856929162
26	Tlangkhuma	G.Ch.	Thenzawl SDC		9862333056
27	Lalnunsanga	G.Ch.	DCSO Office		9863303385
28	R. Vanlaltluanga	G.Ch.	Buarpui Centre		9436974921
29	Laltlanfela	G.Ch.	E.Lungdar Centre		8974993643
30	CVL Malsawmzuala	G.Ch.	Thingsai Centre		9862597655
31	Biakchhawna	G.Ch	Chhipphir Centre		9089988768
32	PC.Thankunga	G.P.	Khawlailung Centre		9862186170
33	Thanglianhhunga	G.P.	Thenzawl SDC		9863097579
34	Englawma	G.P.	Serchhip PDC		9862770537
35	Rokunga	G.P.	Cherhlun Centre		7308236784
36	Lalbuatsaiha	G.P.	Bunghmun Centre		9402157508
37	Lalnunhlina	G.P.	Serchhip PDC		9612842690
38	Lalropuia	G.P.	Bunghmun Centre		8974303615
39	Lalkristiana	G.P.	Khawlailung Centre		9402104537
40	Lalhriatrenga	G.P.	Thingsai Centre		9863369531
41	F.Lianzuala	G.P.	Buarpui Centre		9436732539
42	C.Lalfakawma	G.P.	Thenzawl SDC		8974742991
43	Lalhmunliana	G.P.	Chhingchhip Centre		9856991931
44	R.Zomuanpuia	G.P.	Chhipphir Centre		9402520894
45	R.Lalremthanga	G.P.	E.Lungdar Centre		8414860902
46	Nunthianghlina	G.P.	Thenzawl SDC		9402520894
47	Lalmuanzuala	G.P.	Cherhlun Centre		8014227785
48	Lalkrosthanga	G.P.	Thenzawl SDC		9862179536

3. District Civil Supply Office, Lunglei District.

S/N	Name	Designation	Address	Telephone Office	Mobile / Residence
1	2	3	4	5	6
1.	H. Lalrinpuia	DCSO	Lunglei		9436597898
2.	B. Liansiama	ADCSO	Lunglei		7085760676
3.	P. Lalengmawii	H.A	Lunglei		9612199514
4.	Lalduhawmi	UDC	Lunglei		9862925337
5.	Lalramliana Ralte	UDC	Lunglei		9436147749
6.	Vanhlupuii	LDC	Lunglei		9436147993
7.	R. Lalbiakliana	ASA	Lunglei		9862360382
8.	Lalbiaksanga Pachuau	ASA	Lunglei		9436147286
9.	C. Vanlala	IFCS	Lunglei		8131932034
10.	Lalneihkima	IFCS	Lunglei		
11.	Laltanpuia	Driver	Lunglei		
12.	A. Sanglura	SIFCS	Hnahthial		8974420687
13.	HP Lalrammawia	SIFCS	Lunglei		8131953535
14.	H. Lalbanga	SIFCS	S. Vanlaiphai		9774222127
15.	R. Zirliana	SIFCS	Tlabung		9436157121
16.	SR Lalramzauva	SIFCS	Chawngte		9863151359
17.	C. Biakthansanga	SIFCS	Sangau		9436147851
18.	K.V. Liana	SK	Hnahthial		
19.	Lalruatfeli	SK	Tawipui 'S'		
20.	H. Aingengi	SK	Tarpho		
21.	K. Zoramchhana	SK	Haulawng		
22.	C. Lalrosanga	SK	Putlungasih		
23.	H. Lalruata	SK	Lunglei		
24.	L. Mahu	SK	Lungtian		
25.	Saimawia	SK	Borapansury		9856227101
26.	Lalawmpuia	SK	Lunglei		
27.	Dominic Rosiamliana	SK	Mualthuam 'N'		
28.	Chuautuahhala	Peon	Chawngte		
29.	H. Valalruati	Peon	Lunglei		9862500799
30.	Lalrinmawii	Peon	S. Vanlaiphai		
31.	C. Rohlira	G/Ch	Mualthuam		
32.	C. Rodinga	G/Ch	Lunglei		
33.	PC Kapthianga	G/Ch	Lunglei		9862726782
34.	Lalzamlia	G/Ch	Lunglei		9485056387
35.	Kapthangpuia	G/Ch	Sangau		
36.	Zohmingthanga	G/Ch	Lunglei		
37.	Lawmzama	G/Ch	Hnahthial		
38.	Malsawmzuala	G/Ch	Lunglei		
39.	Lalhmailhazuala	G/Ch	Lunglei		
40.	Thanmawii	G/Ch	Lunglei		9436730543
41.	Zadingi	G/Ch	Lunglei		9612079552
42.	Lalengzauva	G/Ch	Lunglei		
43.	Sangtluanga	G/Ch	Sangau		
44.	Rinawma	G/P	Lunglei		
45.	Biakkima	G/P	Hnahthial		
46.	Vanlalhluna	G/P	Chawngte		
47.	Rokima	G/P	Hnahthial		
48.	Zohmingmawia	G/P	Putlungasih		

S/N	Name	Designation	Address	Telephone Office	Mobile / Residence
1	2	3	4	5	6
49.	K. Lalsanga	G/P	Lunglei		
50.	Liantluanga	G/P	Hnahthial		
51.	Chawngdingliana	G/P	Tarpho		
52.	Malsawma	G/P	Lunglei		
53.	Zothanga	G/P	Lungsen		
54.	Lalramzauva	G/P	Mualthuam 'N'		
55.	Rosanga	G/P	Tarpho		
56.	Lalchhuma	G/P	Lunglei		
57.	Tlanlawma	G/P	Lunglei		
58.	Dokapa	G/P	S. Vanlaiphai		
59.	C. Biakchhunga	G/P	Hnahthial		
60.	Vanlalngura	G/P	Lunglei		
61.	Rammawia	G/P	Tawipui 'S'		
62.	Rohmingthanga	G/P	Lunglei		
63.	Lalremruata	G/P	Lunglei		
64.	Lalramthanga	G/P	Tuichawng		
65.	C. Lalthanzuala	G/P	Lunglei		
66.	Thanchungunga	G/P	Lunglei		
67.	Zodingliana	G/P	Borapansury		
68.	Tlanghmingthanga	G/P	Tlabung		
69.	Lalremruati	G/P	Lunglei		9862654752
70.	T. Biakzama	G/P	Lungtian		
71.	Lalhmunsanga	G/P	Hnahthial		
72.	Laldingliana	G/Ch	Tawipui		
S/N	Name	Designation	Address	Telephone Office	Mobile / Residence
1	2	3	4	5	6
1.	H. Lalramthanga	SK	Tlabung		9436157052
2.	Promot Kumar	G/Ch	Tlabung		
3.	Singkamlova	G/Ch	Tlabung		
4.	Chhimthangpuia	G/P	Tlabung		
5.	Lalremruati	G/P	Tlabung		

4. District Civil Supply Office, Kolasib

<i>Sl. No.</i>	<i>Name</i>	<i>Designation</i>	<i>Address</i>	<i>Telephone Office</i>	<i>Mobile No. Residence</i>
1	Biakthansanga Sailo	DCSO	Mission Vengthlang Aizawl	(03837) 220058	9436156125
2	H. Lalluaia	ADCSD	Ramhlun 'S' Aizawl		9862363333
3	G. M. Laskar	IFCS	Silchar		9401714291
4	K. Lalfakzuala	ASA	Venglai, Kolasib		9436158953
5	Zothanzauva	ASA	Zemabawk Aizawl		9612299612
6	Ruby Majumdar	ASA	Silchar		9862536941
7	Lalrinawma Khalthang	ASA	Model Veng Aizawl		9862581162
8	H. Lalnunmawia	SIFCS	Vairengte	(03837) 261038	8974919528
9	Lalthankima	SIFCS	Vairengte		9856442673
10	R. Hrangkima	SIFCS	Venglai, Kolasib		8415847184
11	Zirsangliana	SIFCS	Ramhlun 'N' Aizawl		9862309924
12	F. Lalhmingliani	SIFCS	Khatla, Aizawl		9862222939
13	I.I. Choudhury	SIFCS	Vairengte		8974819606
14	HK Nath	LDC	Guwahati		8794241816
15	S. Lalthanpari	LDC	Bawngkawn, Aizawl		9862588327
16	Lallawmzuala	LDC	Project Veng, Kolasib		9862447537
17	Zothankima	Driver	Aizawl		
18	RC Lalawmpuii	Peon	Vairengte		8416078983
19	F. Vanlalpeka	Store Keeper	Project veng Kolasib		9436158770
20	Vanlalchhuanga	Store Keeper	Aizawl		8974320384
21	Vanlalthuma Ralte	Store Keeper	Chaltlang, Aizawl		8575715010
22	Vanlalthuma II	Store Keeper	Lungdai		9436143572
23	Laltana	Store Keeper	Vairengte		9612156948
24	T. Rohmingliana	O/Ch	Project veng Kolasib		9862035826
25	Laldinthara	Scale man	Vairengte		8731877133
26	Lalzamlova	Scale man	Lungdai		9774938524
27	Zosangi	S/M	Project veng Kolasib		9612271354
28	Lalthlengliana	G/Ch	Lungdai		8794921570
29	R. Begum	G/Ch	Silchar		9401395145
30	Silpi Deb	G/Ch	Silchar		9854138656
31	K. Lalmangaiha	G/Ch	Hortoki		9856539228
32	S.M. Das	G/Ch	Silchar		8794542591
33	C. Lalbiakliana	G/Ch	Vairengte		8876318175
34	Lalremmawii	G/Ch	Lungdai		9612882631
35	Thanghlira	G/Ch	Kawnpui		9862978519
36	Lalthanpuia	G/Ch	Vairengte		
37	Ngotawia	G/Porter	Bukpui		9862339691

Sl. No.	Name	Designation	Address	Telephone Office	Mobile No. Residence
38	Lalrinawma II	G/Porter	Lungdai		8415882594
39	Pasinar Leyk	G/Porter	Jharkhand		9402179684
40	R Lalzuiliana	G/Porter	Kawnpui		8014416687
41	Pradeep Kr Tudu	G/Porter	Banglakawn Kolasib		9862318972
42	Lalramhluna	G/Porter	Kawnpui		
43	Girjan Musub	G/Porter	Project veng Kolasib		9863604420
44	TA Barbhuiya	G/Porter	Silchar		9954343114
45	Tlantuliana	G/Porter	Aizawl		9862711851
46	R. Lalmalsawma	G/Porter	Hortoki		9856539228
47	Ngurchungnunga	G/Porter	Vairengte		9615085390
48	B. Lalremruata	G/Porter	Vairengte		8974419458
49	S. Begum Laskar	G/Porter	Silchar		7399739227
50	Lalthanmawii	G/Porter	Venglai, Kolasib		9862735377
51	Laltanpuii	G/Porter	Vairengte		9862306015
52	Lalchhanhima Chhangte	G/Porter	Aizawl		
53	Lalrindika	G/Porter			
54	Lalmuanawma	D/Rider	Tumpui Kolasib		9862416036
55	Lalnunsanga	M.R Gr. 'D'	N. Diakkawn, Kolasib		9615690899
56	Lalbuatsaiha	M.R Gr. 'D'	Project Veng, Kolasib		9612132682
57	Henry Zosangzuala	M.R Gr. 'D'	Vairengte		8258872870
58	Dennis Lalnunmawia	M.R Gr. 'D'	Vairengte		
59	C. Lalnunsanga	M.R Gr. 'D'			
60	John Rosangliana	M.R Gr. 'D'			
61	Lalengliana	M.R Gr. 'D'	Vengthar, Kolasib		
62	Lalramchhana	M.R Gr. 'D'			
63	Remruatmawia	M.R Gr. 'D'	Project Veng, Kolasib		9612588477
64	Zomuanpuia	M.R Gr. 'D'			
65	Rinnghinglova	M.R Gr. 'D'			
66	Lalmalsawma	Checkgate Keeper	Vairengte		8731995741

5. District Civil Supply Office, Mamit

Sl No	Name	Designation	Address	Telephone Office	Mobile No. Resident
1	Pu K.Hlimthanga	DCSO	DCSO's Office	2565347/2565773	7085417350
2	Pc. Lawmkima	ADCSD	-do-	2565347/2565773	8414046263
3	Laldawngzela	ASA	-do-	2565347/2565773	9612298266
4	Joseph Vanlalzawma Ralte	ASA	-do-	2565347/2565773	8731989126
5	Michael Zothantluanga	LDC	-do-	2565347/2565773	
6	R.Zadingluaia	SIFCS&CA	-do-	2565347/2565773	9862374664
7	Pc.Lalmachhuani	S.K.	-do-	2565347/2565773	9612695129
8	Laura Lalthanzuali	LDC	-do-	2565347/2565773	7308301040
9	Zonunsanga	LDC	-do-	2565347/2565773	9862949019
10	Parmawia	Porter	-do-	2565347/2565773	8731058146
11	Lalthankhuma	M.R.Driver	-do-	2565347/2565773	8256990979
12	Malsawmdawngzela	MR	-do-	2565347/2565773	8731069171
13	Lalthanfala	S/M	-do-	2565347/2565773	
14	Pc.Lalremmawia	MR	-do-	2565347/2565773	8974393634
15	Chuauhmingliana	S.K.	Mamit Godown	2565347/2565773	8974966141
16	Phirhmingthanga	G/CH	-do-	2565347/2565773	
17	Lallawmawma	MR	-do-	2565347/2565773	9612296336
18	Lallianpuia	MR	-do-	2565347/2565773	
19	J.C.Vanlalhriata	S.K	Kanhmun	2565347/2565773	9862696029
20	Bidhu Nath	Porter	-do-	2565347/2565773	9435379410
21	Lalchhandama	MR	-do-	2565347/2565773	
22	Lalthlengliana	SIFCS&CA	Zawlnuam	2565347/2565773	9436141025
23	Zoramnunthara	SM	-do-	2565347/2565773	
24	Lalnunsanga	G/CH	-do-	2565347/2565773	
25	A.I.Laskar	Porter	-do-	2565347/2565773	
26	Lalhmingthanga	S.K	Rengdil	2565347/2565773	9612770175
27	Lalmuana	SM	-do-	2565347/2565773	8259981646
28	Laltlankima	MR	-do-	2565347/2565773	8413830231
29	Lalsangzuala	S.K.	Kawrthah	2565347/2565773	9862329645
30	Lalbiakzama	Porter	-do-	2565347/2565773	
31	Zomuankima	Porter	-do-	2565347/2565773	8974398373
32	C.Lalngaihawma	MR	-do-	2565347/2565773	9862786414
33	P.Lalroenga	S.K.	Tuipuibari	2565347/2565773	8416083824
34	Ajoy Kumar Dey	Porter	-do-	2565347/2565773	9862775993
35	Lalnunsanga	MR	-do-	2565347/2565773	
36	R.Rotluanga	S.K.	Kawrtethawv eng/Tuidam	2565347/2565773	8974132032
37	Laldinmawia	MR	Kawrtethawv eng	2565347/2565773	8575884977
38	Lalnunhlana	G/CH	-do-	2565347/2565773	
39	Hrangthangvela	SIFCS&CA	W.Phaileng	2565347/2565773	8118914211
40	Dohmingthanga	Porter	-do-	2565347/2565773	

Sl No	Name	Designation	Address	Telephone Office	Mobile No. Resident
41	Laltlanzova	MR	W.Phaileng	2565347/2565773	
42	C.Lalrinliana	MR	-do-	2565347/2565773	8415094665
43	J.Malsawmthanga	S.K.	Phuldungsei	2565347/2565773	9612469071
44	C.Sangkhuma	Porter	-do-	2565347/2565773	
45	Rozamliaana	Porter	-do-	2565347/2565773	9856726197
46	Lalfakawma Ralte	S.K.	Marpara/Puk zing	2565347/2565773	9485018044
47	Boloram Shah	Porter	-do-	2565347/2565773	
48	K.I.Laskar	Porter	-do-	2565347/2565773	
49	Zoramthangi	G/CH	Pukzing	2565347/2565773	
50	Vanlalnghaka	G/CH	-do-	2565347/2565773	

6. District Civil Supply Office, Lawngtlai

S/N	Name	Designation	Address	Telephone Office	Mobile / Residence
1	2	3	4	5	6
1	Spencer Vanlalchhuanga	DCSO	Lawngtlai	03835-232276	9436 147 492
2	Laithangpuia	IFCS	Lawngtlai		9436 621 390
3	T. Lalduhkima	IFCS	Lawngtlai		9436 371 182
4	Lianchhuma Chinzah	IFCS	Lawngtlai		9436147377
5	C. Vanlalhuma	SIFCS	Bungtlang		9436148485
6	J. Lalduhawma	ASA	Lawngtlai		8974 802 866
7	C. Roliana	SK	Lawngtlai		9436 748 110
8	J.H. Lalrawngbawla	SK	Tuithumhnar		9436 149 630
9	Rohlua	SK	Vaseikai		9436 149 050
10	TC. Lalsiammawii	SK	Lawngtlai		8414 046 518
11	Lalhmingthanga I	SK	Damdep		9436 148 146
12	S. Zoramsanga	SK	Lawngtlai		8414 892 836
13	Biaksiami	LDC	Lawngtlai		9436 764 215
14	T. Zasangi	LDC	Lawngtlai		9436 760 737
15	B.K. Rai	S/M	Lawngtlai		9436 148 529
16	Laltlana	S/M	Bungtlang		9863 297 257
17	Alpha Omega	G/Ch	Lawngtlai		9862 432 552
18	Lalkhawngaiha	G/Ch	Vaseikai		8413 935 170
19	C. Lawmsanga	G/Ch	Lawngtlai		8415 881 709
20	Zonunthara	G/Ch	Lawngtlai		9612 851 833
21	Vanlalchhuana	G/P	Diltlang		8974 559 397
22	Hrakhy	G/P	Vathuampui		9485 058 175
23	N. Lalpianmawia	G/P	Lawngtlai		8974 243 146
24	Lalmangaihawia	G/P	Lawngtlai		9612 345 074
25	A.S. Barbhuiya	G/P	Lawngtlai		9613 354 783
26	R.T Sawma	G/P	Damdep		9415 845 992
27	Vanhnuaitanga	G/P	Vaseikai		9402 373 531
28	Sungtingliani	G/P	Lawngtlai		9863 478 235
29	Lalmachhuana	G/P	Lawngtlai		9612 614 204
30	Lalfela	G/P	Tuithumhnar		9612 679 962
31	Tumsanga	G/P	Lawngtlai		
32	B. Vanlalmazlova	G/P	Bungtlang		9089 296 392
33	R. Vanlalpeka	G/P	Lawngtlai		9862 338 640
34	Sangthangpuia Chinzah	G/P	Lawngtlai		8414 052 086
35	Vanlaldiki Chinzah	Gr 'D' (MR)	Lawngtlai		9862 844 990
36	T. Lalhriatpuia	Gr 'D' (MR)	Lawngtlai		9862 631 249
37	H. Lianchungnunga	Gr 'D' (MR)	Lawngtlai		9402 186 442
38	Ramdinthara	Gr 'D' (MR)	Vathuampui		8993 722 074
39	Zonunsanga	Gr 'D' (MR)	Tuithumhnar		9774 630 135
40	Laldinpuia	Gr 'D' (MR)	Vaseikai		9862 222 810
41	C. Lalrinawma	T/A	Lawngtlai		9089261020
42	Lalengruali	T/A	Lawngtlai		9612063890
43	H. Lalrinmawii	T/A	Lawngtlai		8414961703

7. District Civil Supply Office, Saiha

Sl.No	Name	Designation	Address	Telephone Office	Mobile No
1.	C. Zadailova	DCSO	Siaha		8974777999
2.	HT Philip	HA	Siaha		9402125648
3.	R. Lazuiliana	SA	Siaha	Attached to Lunglei DCSO Office	
4.	Paulunglien Gangte	ASA	Siaha		9436149049
5.	Beirapha Hlychho	ASA	Siaha		9436149565
6.	H.Sangkhara	LDC	Siaha		
7.	Roselyn Notlia	LDC	Siaha		
8.	Avijit Chowdhury	SK	Siaha		
9.	Kiran Mala	SK	Siaha		
10.	Liansanga	SIFCS	Kawlchaw		8730929409
11.	KH Pawhra	SIFCS	Siaha		9862705212
12.	V. Sawla	SIFCS	Tuipang		9862742916
13.	VL Mawia Khenglawt	SIFCS	Chapui		9862685913
14.	K. Lalsangluaia	SK	Chakhang		
15.	JR Thianghlima	SK	Bualpui 'NG'		9436149097
16.	Lalrokima	SK	Phalhrang		9862229222
17.	TC Chozah	SK	Siata		9402322655
18.	Jonesia	SK	Chhualung		8131988347
19.	Lalremliana	SK	Niawhtlang		8132911944
20.	Lalramthlenga	SK	Phura		9436148063
21.	Beireisi	SK	Tusi		9436559282
22.	H. Vantuma	SK	Zawngling		9436337796
23.	Nelson Hlychho	SK	Vahai&Laki		9612607610
24.	Ramhupa	Driver	Siaha		
25.	Ramhlunmawii	GP	Siaha		8257944268
26.	S. Lalropuii	G/P	Siaha		9436379880
27.	K. Sanglawta	Peon	Siaha		9612696736
28.	Hrangtinthanga	G/P	Siaha		9862429800
29.	Lawmkima	G/P	Siaha		8974317258
30.	S. Lalenpuia	G/P	Siaha		
31.	Kaphmingthanga	Peon	Siaha		9862429800
32.	K. Khaihmo	Peon	Siaha		7422036117
33.	K. Laltanpuui	M/R	Siaha		9862877209
34.	HC Euredice	M/R	Siaha		9862739303
35.	Zoramthara	G/Ch	Siaha		8415844848
36.	Mahadev	G/P	Siaha		
37.	Gubin Hasdah	G/P	Siaha		
38.	Karu Mardi	G/P	Siaha		
39.	Sunilal Hembrom	G/P	Siaha		
40.	Butu Murmu	G/P	Siaha		
41.	Suku Hembrom	G/P	Siaha		
42.	K. Lallura	G/P	Siaha		
43.	Badurai Hembrom	GP	Siaha		
44.	FC Lalchhuamthanga	G/P	Siaha		
45.	K. Vanlalliana	G/P	Siaha		
46.	F. Bieku	G/P	Chapui		
47.	Laihra	G/Ch	Zawngling		
48.	Rochama	M/R	Laki		
49.	S. Ngokhu	G/P	Vahai		
50.	Pahua	S/M	Chakhang		

Sl.No	Name	Designation	Address	Telephone Office	Mobile No
51.	Donao Solo	G/P	Chakhang		
52.	Chiakunga	S/M	Siata		
53.	Sangcheuva	GP	Siata		
54.	Beinua	G/P	Chhualung		
55.	Pawha	G/P	Chhualung		
56.	V. Chhachhai	M/R	Tuipang		
57.	A. Khaichho	G/P	Niawhtlang		
58.	Zoramawia	G/P	Siaha		
59.	S. Laily	G/P	Phalhrang		
60.	Lalthlamuana	G/P	Phalhrang		
61.	Sanghulha	G/P	Vawmbuk		
62.	B. Lalremruata	M/R	Vawmbuk		
63.	Tialhluna	G/P	Bualpui 'NG'		
64.	Rinsanga	G/Ch	Lungpher		
65.	Ng. Beicho	G/P	Tuisi		
66.	Boro Mardi	G/P	Phura		
67.	C. Zamau	G/P	Phura		
68.	Lalroenga	G/P	Lungpuk		
69.	Robert Lianchungnunga	G/P	Tongkolong		
70.	Beiraduakhei	M/R	Lungpuk		
71.	Joseph Lalawmpuia	M/R	Serkawr		
72.	Lalnunsanga	M/R	Kawlchaw		
73.	Vanlalpeka	G/P	Siaha		

8. District Civil Supply Office, Champhai

S/N	Name	Designation	Address	Telephone Office	Mobile No. Residence
1	2	3	4	5	6
1.	HC.Lallianzuala	DCSO	Bethel	234419	8974133561
2.	Zosangluaia	ADCSD	Mission Veng		8014311191
3.	CC.Sakhawliana	IFCS&CA	Vaivakawn		9436150077
4.	Lalbiakkunga	ASA	Bethel		8974035518
5.	MS.Dawngzuala	ASA	Vengthlang		9615180605
6.	PC.Lalmachhuani	UDC	Bethel Veng		9862148755
7.	Tlangthangzuali	LDC	Bethel		9862790202
8.	Laltanpuui	LDC	Kanan		9862392547
9.	RS.Vantharngbaka	SIFCS	Venglai		8974571439
10.	Rohnuna	SIFCS	Vengthlang		9862614132
11.	Lalthanmawia	SIFCS	Sialhawk		9615379532
12.	Vanlalhuaia	SIFCS	Ramhlun'S'		9862824774
13.	C.Ramrinliana	SK	Bethel		8575175733
14.	Rozamliani Chawngthu	SK	Vengthlang		9436141355
15.	F.Lalhungliana	SK	Bawngkawn		9862603705
16.	Zosangkima Renthlei	SK	Kulikawn		9862131304
17.	Vanlalveni	SK	Tlangsam		8014226328
18.	lalengliani	SK	Kahrawt		9862663264
19.	F.Zirliana	SK	Farkawn		8575332591
20.	C.Lalrammuanpui	SK	Kulikawn		9862754198
21.	Lalrinzuala Pachuau	SK	Khatla		8014956810
22.	JH.Neihkima	SK	Khatla'S'		8731873939
23.	R.Remmawia	SK	Ramthar		7085880877
24.	J.Lalramtluanga	SK	Chawnpui		8729986074
25.	Lalrinpuia Hualngo	SK	Thingdawl		7085845846
26.	Zonuntluanga	SK	Dinthar		9856059298
27.	HC.Lalthawmmawia	SK	Chanmari		8014124241
28.	SN.Lalmuanpuui	SK	Rahsi Veng		7085222393
29.	John Zoramawia	SK	Vaphai		
30.	Chhawrthangpuui	G/Ch	Vengthlang		

S/N	Name	Designation	Address	Telephone Office	Mobile No. Residence
1	2	3	4	5	6
31.	PC.Thanglawta	G/Ch	Ngopa		
32.	Lianthuama	G/Ch	Zote		
33.	K.Zoramthanga	G/Ch	Bethel		9856998742
34.	Lalthankima	G/Ch	Ramhlun'S'		
35.	Lalzuii	G/Ch	Bethel		
36.	B.Lalringheta	G/Ch	Hliappui		
37.	Zothansanga	G/Ch	Khawbung		
38.	H.Lalremsiama	G/Ch	Chawngtlai		
39.	Thangmuana	G/Ch	Teikhang		
40.	H.Laltanpuia	G/Ch	Biate		
41.	R.Vanlalthanga	G/Ch	Khawzawl		
42.	Thankungi	G/Ch	Kawlkulh		
43.	Hrangvela	G/Ch	Zion Veng		
44.	Lalrinthanga	G/Ch	Bungkawn		
45.	RK.Rohlua	SM	Khuangleng		
46.	VM.Dawngsanga	SM	Zemabawk		
47.	Lalthlenga	SM	Ngopa		
48.	Vanlalhruaia	SM	Awmpui Veng		
49.	Laldawnthanga	SM	Kawlkulh		
50.	JH. Lalrinkimi	SM	Kanan Veng		9862087085
51.	T.Thangseia	SM	Vaphai		7085462668
52.	Lalremsiama	GP	Republic		
53.	Lalnghinglova	GP	Salem		9862372840
54.	Lallawmsanga	GP	Kanan		
55.	Lalchuilova	GP	Dungtlang		
56.	B.Zaliana	GP	Farkawn		
57.	Lalengmawii	GP	Biate		
58.	C.Lalthlamuana	GP	Chawngtlai		
59.	Vanlalrawni	GP	Zion Veng		9862732185
60.	Lalhmunpuia	GP	Lungpho		

S/N	Name	Designation	Address	Telephone Office	Mobile No. Residence
1	2	3	4	5	6
61.	Lalbiakzaua	GP	Kawlkulh		
62.	Lallura	GP	Kanan Aizawl		
63.	Vanlalruati	GP	Kanan		8575175109
64.	Zodinsanga	GP	Khuangleng		
65.	Zoramthanga	GP	Khawzawl		
66.	Kapzaua	GP	Kawlbem		
67.	Vungzasuana	GP	Kawlbem		
68.	Hrangzuala	GP	Bungzung		
69.	Lalthakima	GP	Lungpho		
70.	Zarzoliana	GP	Vengthlang'N'		
71.	Zaithantluanga	GP	Biate		
72.	F.Lalnithanga	GP	Khawzawl		
73.	Lalbiakthanga	GP	Kawlkulh		
74.	Sangnghina	GP	Khawzawl		
75.	Sangliansiama	GP	Ngopa		
76.	Vanlalduha	GP	Ngopa		
77.	Lalthlanthanga	GP	Hliappui		
78.	F.Zaithana	GP	Kawlkulh		
79.	Albert Rozuala	Driver	Ramhlun Venglai		

9. Mizoram House, Guwahati

Sl No.	Name	Designation	Address	Telephone Office	Mobile/ Residence
1	2	3	4	5	6
1	Lalzidingi	Assistant	Republic Veng. Aizawl, Mizoram	0361-2529626	8486028966
2	Bhoben Roy	Cook	Basistha Chariali, Vil: Paitharkuchi Guwahati, Assam	0361-2529626	8876268510
3	Mahesh Nath	Room Bearer	Christian Basti, G.S.Road, Guwahati, Assam	0361-2529626	9707194341
4	Tilak Barman	Sweeper	Panjabari, Guwahati, Assam	0361-2529626	9954767736

PART – VIII
MONTHLY REMUNERATION RECEIVED BY OFFICERS AND EMPLOYEES INCLUDING THE
SYSTEM OF COMPENSATION AS PROVIDED IN THE REGULATIONS

1. DIRECTORATE

S/N	Name	Designation	Scale	Present Pay			Gross	Net
				PB	GP	Total		
1	2.	3.	4.	5.	6.	7.	8.	9.
1	R. Lalramnghaka	Director	37400-67000+8900	46380	8900	55280	132058	68540
2	C. Zasanga	Addl.Dir	37400-67000+8700	40220	8700	48920	116882	58324
3	Dr Andrew H.Vanlaldika	Jt.Director	15600-39100+7600	27170	7600	34770	83210	50189
4	H.C. Zonunthara	Dy.Dir(Adm)	15600-39100+6600	22920	6600	29520	70872	43123
5	Robert C. Lalmangaiha	Dy.Dir(G)						
6	Lalremtluangi	Dy.Dir(A)						
7	Thangrosiama	Dy.Dir	15600-39100+6600	25230	6600	31830	76301	41374
8	R. Siamliana	Dy. Dir	-do-	25230	6600	31830	76301	13074
9	V.L. Biakhnuna	Supdt(E)	15600-39100+5400	25060	5400	30460	73081	40599
10	Lalremruata	Supdt(G)	-do-	20350	5400	25750	62013	30909
11	Hmingthanzauva Pachuau	A.O	9300-34800+4800	26700	4800	31500	75225	44355
12	Zomuani	S.A	9300-34800+5400	26390	5400	31790	76207	44261
13	Sangtluangi	S.A	-do-	25440	5400	30840	73974	73674
14	Laldingliani	S.A	-do-	26450	5400	31850	76348	36205
15	Lalrinsanga	IFCS	9300-34800+4800	22010	4800	26810	64204	32992
16	J. Vanlalchhuanga	IFCS	-do-	21310	4400	25710	61619	39265
17	V.L. Malsawmi	ASA	9300-34800+5400	24940	5400	30340	73219	39294
18	Lalrammawia	ASA	9300-34800+4800	23510	4800	28310	67729	40347
19	Zohmingthangi	ASA	-do-	23500	4800	28300	67705	30166
20	Engzuali Ralte	ASA	-do-	23500	4800	28300	68125	38226
21	Vanlalhruii	ASA	-do-	23500	4800	28300	67705	37844
22	Lalbiakkima	ASA	-do-	23030	4800	27830	67021	35014

S/N	Name	Designation	Scale	Present Pay			Gross	Net
				PB	GP	Total		
1	2.	3.	4.	5.	6.	7.	8.	9.
23	Lalsawmliani	ASA	9300-34800+4800	22520	4800	27320	65402	36292
24	Ramengmawia	ASA	-do-	22550	4800	27350	65473	39010
25	Lalthangliani	ASA	-do-	22060	4800	26860	64321	36342
26	Biaknunchami	ASA	-do-	22060	4800	26860	64321	35555
27	D. Lalbiakmawia	ASA	-do-	23020	4800	27820	66577	39077
28	Lalzarzova – I	ASA	-do-	22500	4800	27300	65355	38761
29	Lalrinawma – II	ASA	-do-	22500	4800	27300	65355	37261
30	Lalzarzova – II	ASA	9300-34800+4600	19820	4600	24420	58587	29910
31	Lalremtluanga	ASA	-do-	12920	4400	17320	41902	37705
32	F. Lalsawmliana	J.E	9300-34800+4800	18030	4800	22830	54851	33371
33	Jubilee H. Chuauhang	Steno-II	-do-	20720	4600	25320	60702	30652
34	R. Lalbiakkima	Steno-II	-do-	22020	4800	26820	64227	37313
35	T. Lalnunhlimi	Steno-III	-do-	19880	4600	24480	58728	32834
36	P. Zothankimi	Asst.	9300-34800+4600	22150	4600	26750	64063	32898
37	Zosangliani	-do-	-do-	21490	4600	26090	62512	29887
38	Vungzathanga	-do-	-do-	20300	4600	24900	57225	28280
39	Lalbiakthangi	-do-	-do-	20330	4600	24930	59786	33313
40	H. Lalrinsangi	-do-	-do-	21570	4600	26170	63100	32387
41	P.C. Lalmalsawmi	-do-	-do-	21140	4600	25740	62139	32851
42	Lalremsangi	UDC	-do-	20320	4600	24920	60162	35635
43	Khawlkungi	-do-	-do-	18670	4600	23270	55885	27434
44	J.Zohmingliani	-do-	-do-	18670	4600	23270	53558	24707
45	V. Lalthakimi	-do-	-do-	18660	4600	23260	56611	28668
46	Lalsawmliani	-do-	-do-	17920	4600	22520	54122	53822
47	Lalsawmliani	SIFCS	9300-34800+4400	16710	4400	21750	52313	52013
48	Malsawma	-do-	-do-	16440	4400	20840	50174	27619
49	Lalngakliani Sailo	-do-	-do-	15700	4200	19900	48365	29384
50	F. Lalnuntluanga	S.A	-do-	18840	4600	23440	56284	22801
51	Lalbiakliani	UDC	-do-	16960	4600	21560	51866	28629
52	R. Lalrodingi	-do-	9300-34800+4400	17860	4400	22260	53511	30289
53	C. Zoramthangi	LDC	-do-	17510	4400	21910	52689	31783

S/N	Name	Designation	Scale	Present Pay			Gross	Net
				PB	GP	Total		
1	2.	3.	4.	5.	6.	7.	8.	9.
54	H. Lalrinliani	-do-	9300-34800+4200	16540	4200	20740	47865	22244
55	Lalmuanpuii	-do-	-do-	16500	4200	20700	49845	29159
56	J. Lalkailiana	-do-	-do-	15500	4200	19700	47495	27929
57	Malsawmtluangi	-do-	5200-20400+2400	10190	2400	12590	30787	16267
58	Laltleipuii	-do-	-do-	10190	2400	12590	30787	18767
59	M.S. Thuamluaia	-do-	-do-	10190	2400	12590	30787	18767
60	Tlauliana	-do-	-do-	9110	2400	11510	28289	25459
61	K. Lalrinliana	S.K	9300-34800+4200	15010	4200	19210	46344	29960
62	R. Vanlalchhuani	-do-	-do-	15070	4200	19270	46485	28754
63	T. Lalthanpuii	-do-	-do-	15070	4200	19270	46485	26254
64	Vanlalmuani	-do-	-do-	15030	4200	19230	46391	30192
65	Lalhmuaakkimi	-do-	5200-20200+2800	11530	2800	14330	34876	19999
66	PB Malsawmtluangi	-do-	5200-20200+2400	9460	2400	11860	29071	17620
67	P.C. Thanbanglova	-do-	9300-34800+4200	15550	4200	19750	47613	28008
68	Lalngenmawii	-do-	-do-	15070	4200	19270	46485	29254
69	F. Lalremruata	S.K	5200-20200+2800	14160	2800	16960	41056	22627
70	Vanlalmangaihfa wnvela	-do-	-do-	13660	2800	16460	39881	23842
71	Ngurthangmawii	-do-	5200-20200+2400	10610	2400	13010	31984	13190
72	PH Vanlalmuana	-do-	-do-	8770	2400	11170	27450	24737
73	Remkunga	Driver	9300-34800+4400	17110	4400	21510	51809	29831
74	Lalnunsanga	-do-	-do-	17110	4400	21510	51809	21170
75	H. Lalbiaksanga	-do-	-do-	8160	2200	10360	26006	24806
76	Vanlalchhandama	-do-	-do-	14540	4400	18940	45769	27102
77	Zalianmanga	-do-	-do-	14540	4400	18940	45769	25796
78	Zamvela	-do-	-do-	14540	4400	18940	45769	24796
79	Lalhmimgchhuana	-do-	9300-34800+4200	14340	4200	18540	44829	13619
80	Lalnuna	-do-	-do-	14750	4200	18950	45793	20812
81	Zoliana	-do-	-do-	13290	4200	17490	42572	23730

S/N	Name	Designation	Scale	Present Pay			Gross	Net
				PB	GP	Total		
1	2.	3.	4.	5.	6.	7.	8.	9.
82	Lalrinfela	-do-	9300-34800+4200	11490	4200	15690	38132	18169
83	S. Lalfakzuala	-do-	5200-20200+2400	11170	2400	13570	31793	14812
84	C. Vanlalenga	Sirdar	5200-20200+2800	11810	2800	14610	35744	21648
85	Laltanpuia I	-do-	5200-20200+2400	11100	2400	13500	32925	19695
86	Thandailova	-do-	5200-20200+2800	12470	2800	15270	37145	22395
87	Lalchhandama	-do-	5200-20200+2400	11820	2400	14220	34887	24598
88	B. Malsawma	-do-	-do-	11640	2400	14040	34254	21632
89	Lalchhuanawma	-do-	-do-	10770	2000	12770	31270	20499
90	Zothanpuia	-do-	-do-	10590	2000	12590	30847	22361
91	Thanglura	-do-	-do-	10590	2000	12590	31057	21924
92	Lalrambuatsaiha	-do-	4440 – 7440+1650	6000	1650	7650	18473	16522
93	Lalrintluangi	-do-	-do-	5550	1650	7200	18180	16460
94	T. Lalvulmawii	-do-	-do-	5550	1650	7200	18180	16460
95	K. Hauzika	O.Ch	-do-	10770	2000	12770	31270	23690
96	C. Hlawseii	Peon	4440-7440+1650	6720	1650	8370	20930	16233
97	Lalsangzela	-do-	-do-	6720	1650	8370	20930	17233
98	C. Lalramnghaki	-do-	-do-	6720	1650	8120	20342	15238
99	H.F. Hrangkima	O.Ch	5200–20200+2000	10590	2000	12590	30847	21762
100	Kapchhunga	-do-	-do-	10590	2000	12590	30847	22882
101	Lalhmunthanga	G.Ch	-do-	10770	2000	12770	31270	22515
102	Lalmuanpuia	G.Ch	5200-20200+2000	10590	2000	12590	30907	22392
103	Kamdingliana	-do-	4440-7440+1800	9230	1800	11030	27181	20000
104	T. Hrilliana	-do-	-do-	9400	1650	111050	27228	21645
105	H. Zoliana	-do-	-do-	11640	2400	14040	34254	20959
106	Zanuari	-do-	-do-	10590	2000	12590	30847	23089
107	Laldinmawia	-do-	-do-	9910	1900	11810	29014	18628

S/N	Name	Designation	Scale	Present Pay			Gross	Net
				PB	GP	Total		
1	2.	3.	4.	5.	6.	7.	8.	9.
108	R.C. Vanlalhluna	G.Ch	4440-7440+1650	6000	1650	7650	19238	17417
109	R. Vanlalrenga	-do-	-do-	6000	1650	7650	19238	17417
110	Malsawmtluanga	-do-	-do-	6000	1650	7650	19238	17417
111	Ngurvuni	Peon	-do-	5340	1650	6990	17687	16014
112	Hmachhuana	-do-	5200-20200+2000	10770	2000	12770	31270	23445
113	Tek Bahadur	-do-	-do-	10770	2000	12770	31270	23445
114	Malsawmsanga	-do-	-do-	10590	2000	12590	30847	18534
115	Lallianzuala	-do-	4440-7440+1650	5550	1650	7200	18180	16460
116	V. Pauzamanga	-do-	-do-	6720	1650	8370	20930	13233
117	Lalkiamlova	-do-	-do-	6720	1650	8370	20930	15733
118	R. Zothanpuia	-do-	-do-	6720	1650	8370	21005	14808
119	Ralkapthanga Pachuau	-do-	-do-	6720	1650	8370	20930	16733
120	Badal Kumar Maity	Porter	5200-20200+2000	10770	2000	12770	31270	25445
121	Deepak Kumar	-do-	-do-	10770	2000	12770	31270	25445
122	Chinmoy Sharma	-do-	-do-	10770	2000	12770	29993	24038
123	Lalruatfeli	-do-	4440-7440+1650	5340	1650	6990	17687	16014
124	Thangchhanliana	-do-	5200-20200+2000	10970	2000	12970	31740	19841
125	Vanlalmuana	-do-	-do-	10770	2000	12770	31270	23445
126	Marak	-do-	-do-	10760	2000	12760	31246	25425
127	R. Thangkima	-do-	-do-	10760	2000	12760	31246	20725
128	Lalthakima	-do-	-do-	10760	2000	12760	31246	23425
129	Paudawla	-do-	-do-	10590	2000	12590	30847	20029
130	Kharka Bahadur	-do-	-do-	10590	2000	12590	30847	25089
131	Elizabeth	-do-	5200-20200+1900	10100	1900	12000	29460	18093
132	Syam Sonar	-do-	-do-	10100	1900	12000	29460	21920
133	Ramdina	-do-	-do-	10100	1900	12000	29460	21713
134	Laltanpuia IV	-do-	-do-	9380	1900	11280	27633	20396
135	Chawngchhingpuii	-do-	-do-	9720	1900	11620	28567	18238
136	Vanlalvuana	-do-	-do-	9910	1900	11810	29014	21544
137	Vanlaltluanga	-do-	-do-	9230	1900	11130	27281	18100
138	Abdul Rahman	Porter	5200-20200+1800	9720	1900	11620	28567	18613

S/N	Name	Designation	Scale	Present Pay			Gross	Net
				PB	GP	Total		
1	2.	3.	4.	5.	6.	7.	8.	9.
139	Zakhumi	-do-	4440-7440+1650	6720	1650	8370	20930	16733
140	Lalzampuii	Porter	4440-7440+1650	6720	1650	8370	20930	16733
141	C. Dengzami	-do-	-do-	6720	1650	8370	20930	16733
142	R. Lalremmawii	-do-	-do-	6720	1650	8370	20930	16733
143	Lalmangaihi	-do-	-do-	6720	1650	8370	20930	14733
144	C. Lalmalsawmi	-do-	-do-	6720	1650	8370	20930	16733
145	Balle Baske	-do-	4440-7440+1650	6720	1650	8370	20930	14266
146	Saihmingthangi	-do-	-do-	6720	1650	8370	20930	15733
147	F. Lalbiaksanga	-do-	-do-	6720	1650	8370	20930	15733
148	Lallawmawma	-do-	-do-	6720	1650	8370	20930	16733
149	H. Vanlalnghaka	-do-	-do-	6720	1650	8370	20930	16733
150	Thangmawizuala	-do-	-do-	6720	1650	8370	20930	14733
151	G.Singkhanlal	-do-	-do-	6720	1650	8370	20930	14733
152	R. Sangchhungi	-do-	-do-	6470	1650	8120	20342	13738
153	Sibu Sonar	-do-	-do-	6470	1650	8120	20342	13438
154	K. Lalrinkhuma	-do-	-do-	6000	1650	7650	19238	17417
155	V. Biakchungnunga	-do-	-do-	6000	1650	7650	19238	17417
156	Dengkunga	-do-	-do-	6000	1650	7650	19238	16460
157	Biakmuanpuia	-do-	-do-	5550	1650	7200	18180	16460

NAME OF OFFICE : DISTRICT FORUM

S/N	Name	Designation	Scale	Present Pay			Gross	Net
				PB	GP	Total		
1.	2.	3.	4.	5.	6.	7.	8.	9.
1.	P. Singthanga	President, Dist.Forum		27925		27925	116561	116561
2.	J. Vanlalpari	Steno-III	9300-34800+4600	20310	4600	24910	59739	34523
3.	Lalrinawmi	LDC	9300-34800+4200	15850	4200	20050	46523	23298
4.	Chawngthakima	Peon						
5.	Lalhlantanga	-do-	5200-20200+1800	9910	1900	11810	29014	80210

2. DISTRICT OFFICES

(i) (a) District Civil Supply Office, 'W' Aizawl

S/N	Name	Designation	Scale of Pay	Present Pay			Gross	Net
				PB	GP	Total		
1	2	3	4	5	6	7	8	9
1	Lalkunga Sailo	DCSO	15600 – 39100	24250	6100	30350	72823	23750
2	R. Sanghnuna	ADCSD	15600 – 39100	23580	5400	28980	70023	27019
3	Zodinpuui	A.O	15600 – 39100	27760	5400	33160	79426	45758
4	C. Zodinpuui	S.A	15600 – 39100	27390	5400	32790	78557	42681
5	Lalhmuaqliana	IFCS	9300 – 34800	22010	4800	26810	64204	38669
6	Lalzarliani	H.A	9300 – 34800	21690	4600	26290	63432	34626
7	Ramngaihzuala	ASA	9300 – 34800	23010	4800	27810	66554	36562
8	Lalhmangaihi	ASA	9300 – 34800	24480	4800	29280	70008	40570
9	Zoparmawii	SIFCS	9300 – 34800	16730	4400	21130	50856	23915
10	Lucy Zaithuami	UDC	9300 – 34800	15850	4400	20250	49938	31343
11	C. Rengthuampuii	LDC	9300 – 34800	16530	4200	20730	49916	24588
12	Laltanpuui Hmar	LDC	9300 – 34800	16520	4200	20720	49892	20071
13	Sapthlengliana	S.K	9300 – 34800	15830	4200	20030	48271	29448
14	S.T. Hmingmawia	S.K	9300 – 34800	15520	4200	19720	47542	27960
15	Lalhmachhuana	S.K	5200 – 20200	13930	2800	16730	40516	24267
16	Lalchhanchhuaha	S.K	5200 – 20200	13930	2800	16730	40516	26267
17	Lalchhuanawmi	S.K	5200 – 20200	10910	2800	13710	33419	19525
18	R.S. Lalrinmawia	S.K	5200 – 20200	13620	2400	16020	38847	24151
19	K. Sangthanga	G/ch	5200 – 20200	11360	2400	13760	33596	21677
20	F. Zoramthara	Peon	4440 – 7440	10770	2000	12770	31270	20232
21	P.C. Laldingluaia	Peon	4440 – 7440	6470	1650	8120	20342	14738
22	Liankhumi	G/ch	4440 – 7440	9930	1900	11830	29061	21638
23	Lalrinawma	O/ch	4440 – 7440	10580	2000	12580	30898	22588
24	R. Lalnunmawi	S/M	4440 – 7440	9200	1800	11000	27110	19994
25	Lalropara	S/M	4440 – 7440	6230	1650	7880	19778	17905
26	Lalbiaksanga	G.P	4440 – 7440	10100	1900	12000	29460	20147

S/N	Name	Designation	Scale of Pay	Present Pay			Gross	Net
				PB	GP	Total		
1	2	3	4	5	6	7	8	9
27	C. Lalchhuanawma	G.P	4440 – 7440	8860	1800	10660	26311	18440
28	R. Ramchullovi	G.P	4440 – 7440	6470	1650	8120	20342	14738
29	Vasangkimi	G.P	4440 – 7440	6470	1650	8120	20342	15088
30	Lalramluaha	G.P	4440 – 7440	9390	1800	11190	27557	19317
31	Kapzauva	G.P	4440 – 7440	10790	2000	12790	31317	19585
KHAWRIHNIM CENTRE								
1	Lallianruala	SK	9300 – 34800	15500	4200	19700	47495	29201
2	Lalrawngbawla	G/ch	5200 – 20200	12740	2800	15540	37779	23799
3	Zoramchhana	G.P	4440 – 7440	9720	1900	11620	28567	19841
KANGHMUN CENTRE								
1	Khatlianthuama	SK	5200 – 20200	12570	2800	15370	37320	23631
2	Lalhmingliana	G.P	4440 – 7440	6000	1650	7650	19238	17417
3	Laldinpuia	G.P	4440 – 7440	10100	1900	12000	29460	20392
AIBAWK PDC								
1	R. Hmingsangliana	IFCS	9300 – 34800	18380	4400	22780	54733	26665
2	Lalmalsawmi	SK	5200 – 20200	11290	2800	14090	34312	20394
3	K. Lalrosanga	G.P	4440 – 7440	10220	2000	12220	29977	22910
4	Biaknggheta	G.P	4440 – 7440	10970	2000	12970	31740	25041
5	Malsawma	G.P	4440 – 7440	10220	2000	12220	29977	21356
REIEK CENTRE								
1	C. Zothanpari	SK	5200 – 20200	14180	2800	16980	41103	18659
2	Rengchuana	G.P	4440 – 7440	9050	1800	10850	26758	21043
3	Laldawngliana	G.P	4440 – 7440	9040	1800	10840	26734	22023
SIALSUK CENTRE								
1	H. Lalduhawma	SK	9300 – 34800	15500	4200	19700	47495	30729
2	Lalchawiliana	G/ch	4440 – 7440	10760	2000	12760	31246	25625
3	Laltluanga	S.M	4440 – 7440	10810	2000	12810	31364	22524
4	C. Zothanmawii	G/ch	4440 – 7440	6230	1650	7880	19778	17905

DARLUNG CENTRE								
S/N	Name	Designation	Scale of Pay	Present Pay			Gross	Net
				PB	GP	Total		
1	2	3	4	5	6	7	8	9
1	Lalbiaktluanga	SK	9300-34800	15500	4200	19700	47495	19929
2	Lalsangliana	G/Ch	4440-7440	10770	2000	12770	31270	22218
HMUIFANG CENTRE								
1	Lalngurliani	SK	5200 – 20200	9860	2800	12660	30951	15994
2	Vanparlawma	G/ch	5200 – 20200	11660	2400	14060	34301	28199
<u>RAWPUICHHIP CENTRE</u>								
1	R. Laldawngliana	SK	9300 – 34800	15070	4200	19270	46485	30254
2	Lalbiakdika	G/ch	4440 – 7440	9040	1800	10840	26734	21623

(i) (b) District Civil Supply Office, Kolasib

Sl. No.	Name	Designation	Pay Scale	Present Pay			Gross	Net
				PB	GP	Total		
1	Biakthansanga Sailo	DCSO	15600-39100 +6600	26700	6600	33300	76425	16651
2	H. Lalluaia	ADCSD	15600-39100 +6100	23790	6100	29890	71742	38028
3	G. M. Laskar	IFCS	9300-34800 +4600	20310	4600	24910	59739	40004
4	K. Lalfakzuala	ASA	9300-34800 +4800	23030	4800	27830	66601	36079
5	Zothanzauva	ASA	9300-34800 +4800	22530	4800	27330	65426	40581
6	Ruby Majumdar	ASA	9300-34800 +4800	22560	4800	27360	65496	40497
7	Lalrinawma Khalthang	ASA	9300-34800 +4400	12920	4400	17320	41902	34977
8	H. Lalnunmawia	SIFCS	9300-34800 +4400	16460	4400	20860	50221	28964
9	Lalthankima	SIFCS	9300-34800 +4400	15850	4400	20250	48788	22693
10	R. Hrangkima	SIFCS	9300-34800 +4400	16470	4400	20870	50245	28666
11	Zirsangliana	SIFCS	5300-20200 +4200	15780	4200	19980	48153	31269
12	F. Lalhmingliani	SIFCS	9300-34800 +4200	15780	4200	19980	48153	27269
13	II Choudhury	SIFCS	9300-34800 +4200	15790	4200	19990	48177	31984
14	HK Nath	LDC	5200-20200 +4200	16430	4200	20630	50431	32361
15	S Lalthanpari	LDC	9300-34800 +4200	16540	4200	20740	49939	28562
16	Lallawmzuala	LDC	5200-20200 +2800	11700	2800	14500	35275	20515
17	Zothankima	Driver	9300-34800 +4400	14540	4400	18940	45709	26546
18	RC Lalawmpuii	Peon	4440-7440 +1650	7680	1650	9330	23126	18934

Sl. No.	Name	Designation	Pay Scale	Present Pay			Gross	Net
				PB	GP	Total		
19	F Vanlalpeka	S/K	5300-20200 +4200	15560	4200	19760	47636	28023
20	Vanlalchhuanga	S/K	5300-20200 +4200	16980	4200	21180	50973	32253
21	Vanlalthuma Ralte	S/K	5300-20200 +2800	15590	2800	18390	44417	27706
22	Vanlalthuma II	S/K	5300-20200 +2800	14800	2800	17600	42560	25622
23	Laltana	S/K	5300-20200 +2400	10780	2400	13180	32173	20564
24	T Rohmingliana	O/Ch	4400-7400 +2000	10780	2000	12780	31503	23644
25	Laldinthara	S/M	4400-7400 +2000	11640	2000	13640	33314	27959
26	Lalzamlova	S/M	4400-7400 +2000	11120	2000	13120	32092	26138
27	Zosangi	S/M	4400-7400 +2000	10570	2000	12570	30800	20349
28	Lalthlengliana	G/Ch	4400-7400 +2000	10970	2000	12970	31740	25841
29	R. Begum	G/Ch	4400-7400 +2000	10220	2000	12220	29977	24356
30	Silpi Deb	G/Ch	4400-7400 +2000	10590	2000	12590	30847	25089
31	K.Lalhmgaiha	G/Ch	4400-7400 +1800	10100	1800	11900	29225	23920
32	SM Das	G/Ch	4400-7400 +1800	9910	1800	11710	28779	23414
33	C. Lalbiakliana	G/Ch	4400-7400 +1800	9560	1800	11360	27956	21153
34	Lalremmawii	G/Ch	4400-7400 +1800	9390	1800	11190	27557	21068
35	Thanghlira	G/Ch	4440-7400 +1800	9390	1800	11190	27557	21560
36	Lalthanpuia	G/Ch	4440-7440 +1650	4630	1650	6280	16018	15918
37	Ngotawia	G/Porter	4440-7440 +2000	11360	2000	13360	32656	26913

<i>Sl. No.</i>	<i>Name</i>	<i>Designation</i>	<i>Pay Scale</i>	<i>Present Pay</i>		<i>Total</i>	<i>Gross</i>	<i>Net</i>
				<i>PB</i>	<i>GP</i>			
38	Lalrinawma II	G/Porter	4440-7440 +2000	11170	2000	13170	32210	20337
39	Pasiner Leiyk	G/Porter	4440-7440 +2000	10780	2000	12780	31293	23964
40	R. Lalzuiliana	G/Porter	4440-7440 +2000	10780	2000	12780	31293	23964
41	Pradeep Kr. Tudu	G/Porter	4440-7440 +2000	10590	2000	12590	30847	24688
42	Lalramhluna	G/Porter	4440-7440 +2000	10770	2000	12770	31270	25389
43	Girjan Musub	G/Porter	4440-7440 +1900	10100	1800	11900	29225	24220
44	TA Barbhuiya	G/Porter	4440-7440 +1900	9930	1800	11730	28826	23884
45	Tlantuliana	G/Porter	4440-7440 +1900	9940	1800	11740	28849	20903
46	R. Lalmalsawma	G/Porter	4440-7440 +1800	9380	1800	11180	27533	22296
47	Ngurchungnunga	G/Porter	4440-7440 +1800	9230	1800	11030	27181	22300
48	B.Lalremruata	G/Porter	4440-7440 +1800	9040	1800	10840	26734	21923
49	S. Begum Lasker	G/Porter	4440-7440 +1800	9230	1800	11030	27181	22000
50	Lalthanmawii	G/Porter	4440-7440 +1800	8860	1800	10660	26311	21267
51	Laltanpuui	G/Porter	4440-7440 +1650	6720	1650	8370	20930	17033
52	Lalchhanhima Chhangte	G/Porter	4440-7440 +1650	6470	1650	8120	20342	16238
53	Lalrindika	G/Porter	4440-7440 +1650	6720	1650	8370	20930	17033

M.R. Staff under DCSO Kolasib			Rate of Wages
54	Lalmuanawma	D/Rider	370
55	Lalnunsanga	M.R. Gr. 'D'	270
56	Lalbuatsaiha	M.R. Gr. 'D'	270
57	Henry Zosangzuala	M.R. Gr. 'D'	270
58	Denmnis Lalnunmawia	M.R. Gr. 'D'	270
59	C. Lalnunsanga	M.R. Gr. 'D'	270
60	John Rosangliana	M.R. Gr. 'D'	270
61	Lalengliana	M.R. Gr. 'D'	270
62	Lalramchhana	M.R. Gr. 'D'	270
64	Zomuanpuia	M.R. Gr. 'D'	270
65	Rinnghinglova	M.R. Gr. 'D'	270
66	Lalmalsawma	M.R. Gr. 'D'	300

(ii) (a) District Civil Supply Office, 'E' Aizawl

Sl. No	Name	Designation	Scale of Pay	Present Pay			Gross	Net
				PB	GP	Total		
1	2	3	4	5	6	7	8	9
1	Malsawmtluanga	DCSO	15600-39100-6600	22130	6600	28730	67292	44506
2	Lalthanmawia	ADCSD	15600-39100-5400	22230	5400	27630	63115	328521
3	Saikhuma	AO	9300-34800-4800	24810	4800	29610	67230	38611
4	C. Lalremruata	SA	9300-34800-5400	25850	5400	31250	71188	38388
5	Motilal Chhetri	IFCS	9300-34800-4600	22670	4800	27470	62458	35055
6	Zairemkima	IFCS	9300-34800-4600	19590	4600	24190	55144	35427
7	B. Chalchamlia	HA	9300-34800-4600	21620	4600	25750	61716	34828
8	K. Lalbiakengi	ASA	9300-34800-4600	23600	4800	28400	64532	33609
9	Lalthansangi	ASA	9300-34800-4600	24050	5400	29450	66874	35370
10	Denghmingliani	ASA	9300-34800-4600	22210	4800	27010	61432	28670
11	Lallianzuala	ASA	9300-34800-4600	19100	4600	23700	54051	18687
12	Zoawithanga Sailo	SIFCS	9300-34800-4400	16420	4400	20820	47629	27339
13	Vanlalchhuana	SIFCS	9300-34800-4400	15860	4400	20250	46358	28478
14	Rochhumi	SIFCS	9300-34800-4400	15860	4400	20250	46568	25688
15	Lalfeli	SIFCS	9300-34800-4400	15860	4400	20250	46358	24478
16	J. Thantluanga	SIFCS	9300-34800-4400	15240	4200	19440	44551	258254
17	Vanlalchhuangi	SIFCS	9300-34800-4400	15070	4200	1270	44172	218582
18	F. Lalthanmawii	UDC	9300-34800-4600	19990	4600	24590	46036	33431
19	Vanlalchhani	LDC	9300-34800-4200	15190	4200	19390	45190	29029

Sl. No	Name	Designation	Scale of Pay	Present Pay			Gross	Net
				PB	GP	Total		
1	2	3	4	5	6	7	8	9
20	Lalramchuani	LDC	9300-34800+4200	9820	2400	12220	28451	15953
21	Zohmingliana	Driver	9300-34800+4400	14930	4400	19330	44366	24248
22	Thanghmingliana	Peon	4440-7440+1650	6470	1650	8120	19368	13251
23	Lalramhluna	Sk	9300-34800+4200	14970	4200	19170	44159	21498
24	Thuamliaana	Sk	9300-34800+4200	14920	4200	19120	43838	20736
25	Vanlalhruaia Pachuau	Sk	9300-34800+4200	14920	4200	19120	43838	24872
26	Lalremmawii	Sk	9300-34800+4200	15330	4200	19530	47096	23663
27	Velkima	Sk	9300-34800+4200	14070	4200	18270	41942	41742
28	L. Thangkhamanga	Sk	5200-20200+2800	13500	2800	16300	37549	23613
29	S.P. Zamuana	Sk	5200-20200+2800	13210	2800	16010	38824	24136
30	Lalhmingliana	Sk	5200-20200+2800	13990	2800	16790	38642	16694
31	K. Zothanmawii	Sk	5200-20200+2800	13690	2800	16490	37973	17900
32	M. Zohmingliani	Sk	5200-20200+2800	13440	2800	16240	37415	14772
33	Lalthanthuama	Sk	5200-20200+2800	13020	2800	15820	36479	23389
34	Hualthanchhuma	Sk	5200-20200+2400	13860	2400	16260	39411	25028
35	Zohrangzuala	Sk	5200-20200+2400	13380	2400	15780	36389	36189
36	Lalbiaksanga	Sk	5200-20200+2400	12010	2400	14410	33334	21759
37	Vanlalchama	Sk	R5200-20200+2400	10020	2800	12820	29789	16413
38	Zoramdinthara	Sk	5200-20200+2400	9110	2400	11510	26867	17380

Sl.No	Name	Designation	Scale of Pay	Present Pay			Gross	Net
				PB	GP	Total		
1	2	3	4	5	6	7	8	9
39	Theresa Z. Hmar	Sk	R5200-20200+2400	8440	2400	10840	25373	22846
40	Lalthanmawia	G/ch	5200-20200-2800	11760	2800	14560	33729	22908
41	Thangtura Sailo	G/ch	5200-20200-2000	10840	2000	12840	29893	22813
42	Chawngthuama	G/ch	5200-20200-2000	10590	2000	12590	29336	24333
43	Rosangliana	G/ch	5200-20200-2000	10590	2000	12390	28890	23949
44	Chharhmingthanga	G/ch	5200-20200-2000	10390	2000	12390	28890	22003
45	Roenga	G/ch	5200-20200-2000	10220	2000	12220	25811	18239
46	Sapchhunga	G/ch	5200-20200-2000	10220	2000	12220	28511	22677
47	Lalthuthlunga	G/ch	5200-20200-2000	10010	2000	12010	28042	21894
48	Khawlkunga	G/ch	5200-20200-2000	10200	1900	12100	28243	19392
49	Lalnuntlinga	G/ch	4440-7440-1800	9590	1800	11390	26870	16293
50	Tawnkima	G/ch	4440-7440-1800	8710	1800	10510	24697	20339
51	Vanhnuaitanga	SM	5200-20200-2000	10590	2000	12590	29336	22387
52	Lalzuiliana	SM	5200-20200-2000	10390	2000	12390	28890	19503
53	Rinkima	SM	5200-20200-2000	10220	2000	12220	28511	22298
54	M.S. Dawngliana	SM	4440-7440-1800	9590	1800	11390	26660	22029
55	Rosangzuala	SM	4440-7440-1800	8710	1800	10510	24697	18714
56	Lalsanga-II	Porter	5200-20200-2000	10970	2000	12970	30183	22562
57	Zoliana	Porter	5200-20200-2000	10590	2000	12590	29336	17533

Sl.No	Name	Designation	Scale of Pay	Present Pay			Gross	Net
				PB	GP	Total		
1	2	3	4	5	6	7	8	9
58	Liandawla	Porter	5200-20200-2000	10590	2000	12590	29336	24333
59	Vaingailova	Porter	5200-20200-2000	10380	2000	12380	28867	18123
60	Lalramhluna	Porter	5200-20200-2000	10220	2000	12220	28511	23623
61	Laltanpuia-II	Porter	5200-20200-2000	10220	2000	12220	28511	17895
62	Laltanpuia-III	Porter	5200-20200-2000	9750	1900	11650	27240	20771
63	Liankanglova	Porter	5200-20200-1800	9250	1800	11050	25902	20376
64	Lalbiaksanga-L	Porter	5200-20200-1800	9590	1900	11490	26883	20518
65	V.L. Hlutthanga	Porter	5200-20200-1800	9230	1800	11030	25857	13664
66	R.T. Kima	Porter	5200-20200-1800	9050	1800	10850	25456	20992
67	H. Lalmalsawma	Porter	5200-20200-1800	8900	1800	10700	25121	20704
68	Rinvuana	Porter	5200-20200-1800	8550	1800	10350	24341	19032
69	J. Vanlallawmi	Porter	5200-20200-1650	6470	1650	8120	19368	137510
70	Lalremtluana	Porter	5200-20200-1650	6470	1650	8120	19368	12251
71	Chawimawithangi	Porter	5200-20200-1650	6230	1650	7880	18832	12289
72	Lalzingpuui	Porter	5200-20200-1650	6230	1650	7880	18832	13289
Sl.No	Name	Designation	Date	Rate	Gross	Net		
1	Albert Lalrintluanga	MR	30 days	220 /-	6600	6600		
2	Lalrinhlua	MR	30 days	220 /-	6600	6600		
3	Lalmuankima	MR	30 days	220 /-	6600	6600		
4	Vanlalsawma	MR	30 days	220 /-	6600	6600		
5	Vanlalhlamuana	MR	30 days	220 /-	6600	6600		
6	F. Lalchamlia	MR	30 days	220 /-	6600	6600		
7	Lalfamkima	MR	30 days	220 /-	6600	6600		
8	C. Lalnunmawia	MR	30 days	220 /-	6600	6600		
9	Lalbiakmawia	MR	30 days	220 /-	6600	6600		
10	R. Lalremkima	MR	30 days	220 /-	6600	6600		
11	Michael Zodinpuia	MR	30 days	220 /-	6600	6600		
12	Lalramrawngbawla	MR	30 days	220 /-	6600	6600		

(ii) (b) District Civil Supply Office, Serchhip

Sl. No.	Name	Designation	Scale of pay	Present Pay			Gross	Net
				PB	GP	Total		
1	2	3	4	5	6	7	8	9
1	Rosangmawia	DCSO	15600 - 39100	24070	6600	30670	73995	40438
2	Vanlalhriata	IFCS	3900 - 34800	19880	4600	24480	56280	31786
3	Lalremliana	ASA	3900 - 34800	24460	4800	29260	67635	32212
4	Lalrinawma	ASA	3900 - 34800	22540	4800	27340	65449	34502
5	Sangzela	SIFCS	3900 - 34800	17360	4400	21760	50160	29687
6	Lalawmawia	SIFCS	3900 - 34800	15550	4200	19750	45638	25174
7	RL.Phena	SIFCS	3900 - 34800	14670	4200	18870	45545	22916
8	B. Lalbiakvela	SIFCS	5200 - 20200	15010	4200	19210	44423	27039
9	H. Lalmalsawmi	LDC	5200 - 20200	15830	4200	20030	48271	30948
10	V. Lalromawii	LDC	5200 - 20200	9060	2400	11460	28431	16292
11	Rodingliana	Driver	3900 - 34800	14940	4400	19340	46649	26095
12	H.Chhawnthanga	S.K.	5200 - 20200	14480	4200	18680	45098	27328
13	Laldinchami	Peon	4400 - 7440	6720	1650	8370	20930	15733
14	Melody Lalremruati	G.Ch.	4400 - 7440	6230	1650	7880	19778	17905
15	Zosanga	G.P.	5200 - 20200	11370	2000	13370	32680	25708
16	R.Lalrohluna	S.K.	5200 - 20200	15530	4200	19730	47566	24977
17	J.Lalrotluanga	S.K.	5200 - 20200	13920	2800	16720	38820	17478
18	Lalramchhana	S.K.	5200 - 20200	13920	2800	16720	38820	17478
19	JH.Zarzoliana	S.K.	5200 - 20200	13600	2400	16000	37200	37100
20	Vanlalchhuana – II	S.K.	5200 - 20200	15250	4200	19450	44963	26492
21	Vanlaltlana	S.K.	5200 - 20200	15780	4200	19980	46155	20661
22	Lianzela	S.K.	5200 - 20200	9110	2400	11510	27098	24208
23	Lalthlamuani	S.K.	5200 - 20200	10290	2800	13090	31962	16514
24	Varthanmawia	S.M.	5200 - 20200	10770	2000	12770	31270	23445
25	James Hmingthangzuala	G.Ch.	5200 - 20200	10100	1900	12000	28260	22120
26	Tlangkhuma	G.Ch.	5200 - 20200	9940	1900	11840	29084	22603
27	Lalnunsanga	G.Ch.	5200 - 20200	9720	1900	11620	28567	22668
28	R. Vanlaltluanga	G.Ch.	5200 - 20200	9390	1800	11190	27557	21817

Sl. No.	Name	Designation	Scale of pay	Present Pay			Gross	Net
				PB	GP	Total		
1	2	3	4	5	6	7	8	9
29	Laltlanfela	G.Ch.	5200 - 20200	9230	1800	11030	27181	19243
30	CVL Malsawmzuala	G.Ch.	5200 - 20200	6470	1650	8120	20342	15238
31	Biakchhawna	G.Ch	4400-7440	5130	1650	6780	17193	15597
32	PC.Thankunga	G.P.	5200 - 20200	11800	2400	14200	34630	27776
33	Thanglianchung	G.P.	5200 - 20200	11360	2400	13760	33596	26405
34	Englawma	G.P.	5200 - 20200	10590	2000	12590	30847	22664
35	Rokunga	G.P.	5200 - 20200	10590	2000	12590	30847	24589
36	Lalbuatsaiha	G.P.	5200 - 20200	10770	2000	12770	31270	23688
37	Lalnunhlina	G.P.	5200 - 20200	10770	2000	12770	31270	24635
38	Lalropuia	G.P.	5200 - 20200	10770	2000	12770	31270	21999
39	Lalkristiana	G.P.	5200 - 20200	10590	2000	12590	30847	23089
40	Lalhriatrenga	G.P.	5200 - 20200	9940	1900	11840	29084	19232
41	F.Lianzuala	G.P.	5200 - 20200	10100	1900	12000	29460	23420
42	C.Lalfakawma	G.P.	5200 - 20200	9230	1800	11030	26078	19797
43	Lalhmunliana	G.P.	5200 - 20200	9230	1800	11030	27181	21000
44	R.Zomuanpuia	G.P.	4400 - 7440	6720	1650	8370	20930	16233
45	R.Lalremthanga	G.P.	4400 - 7440	6470	1650	8120	20342	12738
46	Nunthianghlina	G.P.	4400 - 7440	6000	1650	7650	19238	17417
47	Lalmuanzuala	G.P.	4400 - 7440	6000	1650	7650	19238	17417
48	Lalkrosthanga	G.P.	4400 - 7440	6000	1650	7650	19238	17417

(iii) District Civil Supply Office, Champhai

S/N	Name	Designation	Scale	Present Pay			Gross	Net
				PB	GP	Total		
1.	2.	3.	4.	5.	6.	7.	8.	9.
1.	HC.Lallianzuala	DCSO	15600-34800+5400	23060	5400	28460	67273	42382
2.	CC.Sakhawliana	IFCS	9300-34800+4400	20750	4600	25350	59252	30700
3.	PC.Lalhmachhuani	UDC	9300-34800+4200	23260	4800	28060	68141	10955
4.	Rohnuna	SIFCS	9300-34800+4201	16460	4400	20860	50221	28651
5.	Lalthanmawia	SIFCS	9300-34800+4202	15360	4400	19760	47636	26924
6.	RS.Vantharnghaka	SIFCS	9300-34800+4203	15300	4200	19500	47025	30015
7.	Vanlalhruaia	SIFCS	9300-34800+4204	15700	4200	19900	47965	30643
8.	Lalbiakkunga	ASA	9300-34800+4400	22070	4800	26870	64345	33086
9.	T.T.Zuali	LDC	5200-20200+2400	15550	4200	19750	47823	26188
10.	Laltanpuii	LDC	5200-20200+2401	15510	4200	19710	47519	29146
11.	Albert Rozuala	Driver	9300-34800+4400	14540	4400	18940	45769	28241
12.	Malsawmdawngzuala	ASA	9300-34800+4800	12920	4400	17320	41902	37705
13.	F.Zirliana	SK	5200-20200+4200	15830	4200	20030	48270	30392
14.	HC.Lalthawmmawia	SK	5200-20200+4201	15550	4200	19750	47554	28609

S/N	Name	Designation	Scale	Present Pay			Gross	Net
				PB	GP	Total		
1.	2.	3.	4.	5.	6.	7.	8.	9.
15.	JH.Neihkima	SK	5200-20200+4 202	15510	4200	19710	47518	30444
16.	Zonuntluanga	SK	5200-20200+4 203	15510	4200	19710	47518	28864
17.	R.Remmawia	SK	5200-20200+4 204	15510	4200	19710	47518	29498
18.	F.Lalhungliana	SK	5200-20200+4 205	15300	4200	19500	47025	30115
19.	C.Ramrinliana	SK	5200-20200+4 206	15300	4200	19500	47025	30115
20.	Lalrinzuala Pachuau	SK	5200-20200+2 800	14510	2800	17310	40147	24995
21.	SN.Lalmuanpuii	SK	5200-20200+2 801	13660	2800	16460	39881	24342
22.	Rozamliani Chawngthu	SK	5200-20200+2 802	13340	2800	16140	39129	11340
23.	lalengliani	SK	5200-20200+2 803	13480	2800	16280	39458	23560
24.	Vanlalveni	SK	5200-20200+2 804	13900	2800	16700	39025	23549
25.	C.Lalrammuanpui	SK	5200-20200+2 400	10500	2400	12900	16125	31515
26.	John Zorammuana	SK	5200-20200+2 401	8722	2400	11122	13902	27336
27.	Zothansanga	G/Ch	5200-20200+2 800	11650	2400	14050	32872	26443
28.	Lalthankima	G/Ch	5200-20200+2 801	11640	2400	14040	34254	27959

S/N	Name	Designation	Scale	Present Pay			Gross	Net
				PB	GP	Total		
1.	2.	3.	4.	5.	6.	7.	8.	9.
29.	PC.Thanglawta	G/Ch	5200-20200+2 802	10790	2000	12790	31316	24214
30.	Thangmuana	G/Ch	5200-20200+2 803	10590	2000	12590	30846	24088
31.	Lalzuii	G/Ch	5200-20200+2 804	10590	2000	12590	31096	24338
32.	H.Lalremsiama	G/Ch	5200-20200-1800	9930	1900	11830	29060	23583
33.	Lianthuama	G/Ch	5200-20200-1800	9940	1900	11840	29084	23603
34.	H.Laltanpui	G/Ch	5200-20200-1800	9940	1900	11840	29049	23568
35.	Chhawrthangpuii	G/Ch	5200-20200-1800	9310	1800	11110	27368	22157
36.	Thankungi	G/Ch	5200-20200-1800	9040	1800	10840	13550	21123
37.	B,.Lalrinnggheta	G/Ch	5200-20200-1800	8870	1800	10670	13337	21286
38.	Hrangvela	G/Ch	5200-20200-1800	8870	1800	10670	13337	20340
39.	R,Vanlalthanga	G/Ch	5200-20200-1800	8870	1800	10670	13337	20286
40.	Lalthlenga	SM	5200-20200-2000	10970	2000	12970	16212	25840
41.	B.Vanlalhruaia	SM	5200-20200-2000	10400	2000	12400	15500	24712
42.	R.K Rohlua	SM	5200-20200-2000	10780	2000	12780	15975	25464

S/N	Name	Designation	Scale	Present Pay			Gross	Net
				PB	GP	Total		
1.	2.	3.	4.	5.	6.	7.	8.	9.
43.	Laldawnthanga	SM	5200-20200-2000	10590	2000	12590	15737	25088
44.	JH.Lalrinkimi	SM	5200-20200-2000	6470	1650	8120	10150	16238
45.	VM Dawngsanga	SM	4440-7440-1650	6000	1650	7650	9562	17416
46.	Lalrinthang	SM	4440-7440-1650	6000	1650	7650	9562	17416
47.	K.Zoramthanga	SM	4440-7440-1650	6000	1650	7650	9562	17456
48.	T.Thangseia	SM	4440-7440-1650	5130	1650	6780	8475	15567
49.	Zosangkima Renthlei	SK	5200-20200-2400	8770	2400	11170	13962	24736
50.	Lalrinpuia Hualngo	SK	5200-20200-2400	8770	2400	11170	13962	24736
51.	J.Lalramtluanga	SK	5200-20200-2400	8770	2400	11170	13962	24736
52.	Sangnghina	Porter	5200-20200-2000	11800	2400	14200	17750	28276
53.	Lalengmawii	Porter	5200-20200-2000	11800	2400	14200	17750	26726
54.	Vungzasuan	Porter	5200-20200-2000	10970	2000	12970	16212	25840
55.	Zarzoliana	Porter	5200-20200-2000	10370	2000	12370	15462	24652
56.	Lalbiakthanga	Porter	5200-20200-2000	10370	2000	12370	15462	24652

S/N	Name	Designation	Scale	Present Pay			Gross	Net
				PB	GP	Total		
1.	2.	3.	4.	5.	6.	7.	8.	9.
57.	Lalhmunpuia	Porter	5200-20200-2000	10370	2000	12370	15462	23285
58.	Lalchuilova	Porter	5200-20200-1900	9940	1900	11840	14800	22290
59.	Sangliansiama	Porter	5200-20200-1900	9720	1900	11620	14525	23168
60.	Lalbiakzaua	Porter	5200-20200-1900	9940	1900	11840	14800	23525
61.	F.Lalnithanga	Porter	5200-20200-1900	9720	1900	11620	14525	23168
62.	B.Zaliana	Porter	5200-20200-1900	9230	1800	11030	13787	20053
63.	Lalthakima	Porter	5200-20200-1900	9230	1800	11030	13787	21999
64.	Lallawmsanga	Porter	5200-20200-1900	8870	1800	10670	13337	19287
65.	Hrangzuala	Porter	5200-20200-1900	8870	1800	10670	13337	21287
66.	Vanlalduha	Porter	5200-20200-1900	8870	1800	10670	13337	21287
67.	Vanlalrawni	Porter	4440-7440-1650	6720	1650	8370	10462	16733
68.	Zoramthanga	Porter	4440-7440-1650	6720	1650	8370	10462	14733
69.	Zodinsanga	Porter	4440-7440-1650	6720	1650	8370	10462	16233
70.	Lalthlamuana	Porter	4440-7440-1650	6720	1650	8370	10462	14733

S/N	Name	Designation	Scale	Present Pay			Gross	Net
				PB	GP	Total		
1.	2.	3.	4.	5.	6.	7.	8.	9.
71.	Zaithantluanga	Porter	4440- 7440- 1650	6720	1650	8370	10462	16233
72.	F.Zaithana	Porter	4440- 7440- 1650	6720	1650	8370	10462	16233
73.	Lalremsiama	Porter	4440- 7440- 1650	6720	1650	8370	10462	16233
74.	Lalthlanthanga	Porter	4440- 7440- 1650	6000	1650	7650	9562	17416
75.	Lalnginglova	Porter	4440- 7440- 1650	6000	1650	7650	9562	17416
76.	Lallura	Porter	4440- 7440- 1650	6000	1650	7650	9562	17416
77.	R.Vanlalruati	Porter	4440- 7440- 1650	6000	1650	7650	9562	17416
78.	Vanlalnunsanga	Porter	4440- 7440- 1650	6000	1650	7650	9562	17416

(iv) (b) District Civil Supply Office, Saiha

Sl. No	Name	Designation	Scale of Pay	Present Pay			Gross	Net
				PB	GP	TOTAL		
1.	C. Zadailova	DCSO	15600-39100+5400	23060	5400	28460	66635	38468
2.	R. Lalzuiliana	SA	9300-34800+5400	26900	5400	32300	77405	41911
3	HT Philip	HA	9300-34800+4600	22410	4600	27010	65474	36106
4.	N. Paulunglien Gangte	SA	9300-34800+4600	22550	4800	27350	63538	38155
5.	Hlychho Beirapha	SA	9300-34800+4600	19810	4600	24410	59364	35024
6.	Liansanga	SIFCS	933-34800+4400	17070	4400	21470	52455	33408
7.	KH Pawhra	SIFCS	933-34800+4400	16790	4400	21190	51797	33969
8.	V. Sawla	SIFCS	933-34800+4400	16460	4400	20860	51021	27450
9.	VL Mawia Khenglawt	SIFCS	933-34800+4400	15700	4200	19900	48765	27943
10.	Ramhupa	Driver	933-34800+4400	14530	4400	18930	46486	28196
11.	H. Sangkhara	LDC	5200-20200+2400	16540	4200	20740	51489	23129
12.	Roselyn Notlia	LDC	5200-20200+2400	13920	2800	16720	41292	27050
13.	Kaphmingthanga	Peon	4440-7440+1650	12360	2400	14760	35270	24459
14.	K.Sanglawta	Peon	4440-7440+1650	6970	1650	8620	22317	18028
15.	K.Kheihmo	Peon	4440-7440+1650	6270	1650	8370	21730	15533
16.	K. Lalsangluaia	SK	5200-20200+2400	14730	4200	18930	46486	30521
17.	Avijit Chowdhury	SK	5200-20200+2400	15100	4200	19300	47355	29101

Sl. No	Name	Designation	Scale of Pay	Present Pay			Gross	Net
				PB	GP	TOTAL		
18.	Lalramthlenga	SK	5200-20200 +2400	15290	4200	19490	47802	31400
19	JR Thianghlima	SK	5200-20200 +2400	14500	2800	17300	42655	27961
20	Jonesia	SK	5200-20200 +2400	13910	2800	16710	41269	27035
21	Beireisi	SK	5200-20200 +2400	14330	2800	17130	42256	27695
22	Kiran Mala	SK	5200-20200 +2400	13500	2800	16300	40305	20841
23	Lalremliana	SK	5200-20200 +2400	10320	2800	13120	32832	21398
24	Lalrokima	SK	5200-20200 +2400	10940	2400	13340	32015	20160
25	H. Vantuma	SK	5200-20200 +2400	10510	2400	12910	32339	17744
26.	TC Chozah	SK	5200-20200+ 2400	9820	2400	12220	29495	18513
27.	Chiakunga	S/M	4440-7440+ 1650	11820	2400	14220	35477	27909
28.	Laihra	G/Ch	4440-7440+ 1650	10770	2000	12770	32070	22745
29.	K. Lallura	S/M	4440-7440 +1650	10770	2000	12770	32070	21745
30.	Rinsanga	G/Ch	4440-7440+ 1650	10760	2000	12760	32046	20900
31.	Donao Solo	G/Ch	4440-7440+ 1650	9230	2000	11030	27981	20300
32.	Nelson Hlychho	SK	5200-20200 +2400	9110	2400	11510	29049	26259
33.	F. Lalchhuanthanga	G/Ch	4440-7440+ 1650	6230	1650	7880	20578	18745
34.	Zoramthara	G/Ch	4440-7440+ 1650	4440	1650	6090	16372	14902

Sl. No	Name	Designation	Scale of Pay	Present Pay			Gross	Net
				PB	GP	TOTAL		
35.	Suku Hembrom	G/P	4440-7440+1650	11640	2400	14040	35054	28759
36.	Butu Murmu	G/P	4440-7440+1650	11200	2000	13200	33080	24096
37.	Zorammawia	GP	4440-7440+1650	10970	2000	12970	32540	26641
38.	Pahu-a	G/P	4440-7440+1650	10970	2000	12970	32540	23641
39.	Beinua	GP	4440-7440+1650	10970	2000	12970	32540	26641
40.	Boro Mardi	GP	4440-7440+1650	11230	2000	13230	33151	27156
41.	Karu Mardi	GP	4440-7440+1650	10810	2000	12810	32164	22824
42.	Lawmkima	GP	4440-7440-1650	10590	2000	12590	30388	20880
43.	Sunilal Hebrom	G/P	4440-7440+1650	10590	2000	12590	31647	25889
44.	Gubin Hasdah	GP	4440-7440+1650	10600	2000	12600	31670	25908
45.	Vanlalpeka	G/P	4440-7440+1650	9860	2000	11860	29931	22473
46.	Vanlalliana	GP	4440-7440+1650	9670	1900	11570	28093	19462
47.	Mahadev Hasdah	G/P	4440-7440+1650	10300	1900	12200	29720	23859
48.	Sanghulha	GP	4440-7440+1650	9940	1900	11840	28700	19969
49.	Tialhluna	G/P	4440-7440+1650	9720	1900	11620	29367	22641
50.	Badurai Hebrom	GP	4440-7440+1650	9240	1800	11040	28004	20819
51.	S. Ngokhu	GP	4440-7440+1650	9040	1800	10840	26450	15889

Sl. No	Name	Designation	Scale of Pay	Present Pay			Gross	Net
				PB	GP	TOTAL		
52.	C. Zamau	G/P	4440-7440+1650	9040	1800	10840	26450	21089
53.	A. Khaichho	GP	4440-7440+1650	9040	1800	10840	27534	22432
54.	Sangcheuva	G/P	4440-7440+1650	8860	1800	10660	27111	19467
55.	Ng. Beicho	G/P	4440-7440+1650	7790	1800	9590	24597	16949
56.	Ramhlunmawii	G/P	4440-7440+1650	6720	1650	8370	21940	17743
57.	C. Hrangtinthanga	GP	4440-7440+1650	6720	1650	8370	21730	16533
58.	F. Biekhu	GP	4440-7440+1650	6720	1650	8370	21730	17533
59.	Pawha	G/P	4440-7440+1650	6720	1650	8370	21730	17533
60.	S. Lalropuii	GP	4440-7440+1650	6720	1650	8370	21730	17533
61.	S. Lalenpuia	G/P	4440-7440+1650	6720	1650	8370	21730	15033
62.	N. Lalroenga	GP	4440-7440+1650	5550	1650	7200	18980	17260
63.	Lalthlamuana	GP	4440-7440+1650	5550	1650	7200	18980	17260
64.	HC Laili	GP	4440-7440+1650	5550	1650	7200	18980	17260
65.	R. Lianchungnung	G/P	4440-7440+1650	5550	1650	7200	18980	17260
66	K. Laltanpuui	M/R	FIXED Rs. 270/- per day					8370
67	HC Euredice	M/R	FIXED Rs. 270/- per day					8370
68	Beiraduakhei	M/R	FIXED Rs. 270/- per day					8370
69	V. Chhachhai	M/R	FIXED Rs. 270/- per day					8370
70	Joseph Lalawmpuia	M/R	FIXED Rs. 270/- per day					8370
71	B. Lalremruata	M/R	FIXED Rs. 270/- per day					8370
72	Rochama	M/R	FIXED Rs. 270/- per day					8370
73	Lalnunsanga	M/R	FIXED Rs. 270/- per day					8370

(iii) District Civil Supply Office, Lunglei

S/N	Name	Designation	Scale	Present Pay			Gross	Net
				PB	GP	Total		
1.	2.	3.	4.	5.	6.	7.	8.	9.
1.	H. Lalrinpuia	DCSO	15600-39100 +6600	19680	6600	26280	61230	54917
2.	B. Liansiama	ADCSD	15600-39100 +5400	23580	5400	28980	70203	45198
3.	P. Lalengmawii	HA	15600-39100 -6600	21150	4600	25750	62513	31338
4.	Lalduhawmi	UDC	9300-34800 -4600	21100	4600	25700	62745	32399
5.	Lalramliani Ralte	UDC	9300-34800 -4600	18700	4600	23300	56355	35881
6.	Vanhlpuii	LDC	9300-34000 -4600	16420	4200	20620	50057	25638
7.	Laltanpuia	Driver	9300-34000 -4600	14540	4400	18940	46109	21136
8.	R. Lalbiakliana	ASA	9300-34800 -4800	22560	4800	27360	65896	41283
9.	Lalbiaksanga Pachuau	ASA	9300-34800 -4800	22030	4800	26830	64651	33514
10.	Lalneihkima	IFCS	9300-34800 -4600	19820	4600	24420	58987	32639
11.	A. Lalsanglura	SIFCS	9300-34800 -4200	16730	4400	21130	51656	33375
12.	HP Lalrammawia	SIFCS	9300-34800 -4200	16740	4400	21140	51279	32990
13.	H. Lalbanga	SIFCS	9300-34800 -4200	17070	4400	21470	52455	33408
14.	R. Zirliana	SIFCS	9300-34800 -4200	19180	4600	23780	57883	34035
15.	S.R. Lalramzauva	SIFCS	9300-34800 -4200	15820	4200	20020	49047	31231
16.	C.T. Biakthansanga	SIFCS	9300-34800 -4200	15820	4200	20020	49047	28231

S/N	Name	Designation	Scale	Present Pay			Gross	Net
				PB	GP	Total		
1.	2.	3.	4.	5.	6.	7.	8.	9.
17.	KV Liana	SK	5200-20200-4200	12930	2400	15330	38026	23869
18.	Lalruatfeli	SK	5200-20200-4200	13650	2800	16450	40658	25627
19.	H. Aingengi	SK	5200-20200-4200	13270	2800	16070	39765	25030
20.	K. Zoramchhana	S.K	5200-20200-4200	11290	2400	13690	34172	20294
21.	C. Lalrosanga	S.K	5200-20200-4200	13150	2400	15550	38543	25214
22.	H. Lalruata	S.K	5200-20200-4200	12190	2400	14590	35887	23307
23	L. Mahu	SK	5200-20200-4200	14760	2800	17560	43266	26369
24	Saimawia	SK	5200-20200-4200	12950	2800	15750	39013	24192
25	Lalawmpuia	SK	5200-20200-4200	10110	2400	12510	31399	17886
26	Dominic Rosiamliana	SK	5200-20200-4200	13640	4200	17840	43924	26409
27	C. Vanlala	IFCS	9300-34806-4600	21230	4600	25830	62301	39854
28	Chuaautuahlala	Peon	5200-20200-2000	10530	2000	12530	31506	25770
29	H. Vanlalruati	Peon	5200-20200-2000	7790	1800	9590	24207	18559
30	Lalrinmawii	Peon	5200-20200-2000	7790	1800	9590	24607	19954
31	C. Rohlira	G/Ch	5200-20200-2400	11630	2400	14030	35031	28740
32	C. Rodinga	G/Ch	5200-20200-2400	9850	1900	11750	29273	21825
33	PC. Kapthianga	G/Ch	5200-20200-2400	10600	2000	12600	31270	25508

S/N	Name	Designation	Scale	Present Pay			Gross	Net
				PB	GP	Total		
1.	2.	3.	4.	5.	6.	7.	8.	9.
34	Lalzamliana	G/Ch	5200- 20200- 2400	10590	2000	12590	31247	22989
35	Kapthangpuia	G/Ch	5200- 20200- 2400	10590	2000	12590	31247	25489
36	Zohmingthanga	G/Ch	5200- 20200- 2400	11270	2400	13670	33785	27627
37	Lawmzama	G/Ch	5200- 20200- 2400	10590	2000	12590	31647	25889
38	Malsawmzuala	G/Ch	5200- 20200- 2400	9940	1900	11840	29484	22057
39	Lalmangaihzuala	G/Ch	5200- 20200- 2400	10100	1900	12000	29860	22374
40	Thanmawii	G/Ch	5200- 20200- 2400	9380	1800	11180	27933	21696
41	Zadingi	G/Ch	5200- 20200- 2400	9570	1800	11370	28380	23073
42	Lalengzaua	G/Ch	5200- 20200- 2400	6460	1650	8110	20719	16618
43	Sangtlunga	G/Ch	5200- 20200- 2400	9960	2000	11960	30166	24641
44	Rinawma	GP	5200- 20200- 2400	9540	1800	11340	28309	19851
45.	Biakkima	GP	5200- 20200 -2400	12960	2800	15760	39096	38996
46.	Vanlalhluna	GP	5200- 20200 -2400	12730	2800	15530	38556	31710
47.	Rokima	GP	5200- 20200 -2400	11850	2400	14250	35148	27448
48.	Zohmingmawia	GP	5200- 20200 -2400	11800	2400	14200	35430	27751
49.	K. Lalsanga	GP	5200- 20200 -2400	10970	2000	12970	32140	26240
50.	Liantluanga	GP	5200- 20200 -2400	10970	2000	12970	32140	24553

S/N	Name	Designation	Scale	Present Pay			Gross	Net
				PB	GP	Total		
1.	2.	3.	4.	5.	6.	7.	8.	9.
51.	Chawngdingliana	GP	5200- 20200 -2400	10970	2000	12970	32540	23585
52.	Malsawma	GP	5200- 20200 -2400	11230	2000	13230	32751	25429
53.	Zothanga	GP	5200- 20200 -2400	10970	2000	12970	32140	26240
54.	Lalramzauva	GP	5200- 20200 -2400	10770	2000	12770	32070	26245
55.	Rosanga	GP	5200- 20200 -2400	10760	2000	12760	31646	25825
56.	Lalchhuma	GP	5200- 20200 -2400	10770	2000	12770	31670	22290
57.	Tlanlawma	GP	5200- 20200 -2400	10760	2000	12760	31646	25825
58.	Dokapa	GP	5200- 20200 -2400	10760	2000	12760	32046	26225
59.	C. Biakchhunga	GP	5200- 20200 -2400	10760	2000	12760	32046	26225
60.	Vanlalngura	GP	5200- 20200 -2400	10370	2000	12370	30730	25053
61.	Rammawia	GP	5200- 20200 -2400	9940	2000	11840	29884	24403
62.	Rohmingthanga	GP	5200- 20200 -2400	10370	2000	12370	30730	25053
63.	Lalremruata	GP	5200- 20200 -2400	9860	2000	11860	29531	21043
64.	Lalramthanga	GP	5200- 20200 -2400	9570	1800	11370	28380	23073
65.	C. Lalthanzuala	GP	5200- 20200 -2400	9360	1800	11160	27886	20998
66.	Thanchungnunga	GP	5200- 20200 -2400	6720	1650	8370	21330	17133
67.	Zodingliana	GP	5200- 20200 -2400	6720	1650	8370	21730	17533

S/N	Name	Designation	Scale	Present Pay			Gross	Net
				PB	GP	Total		
1.	2.	3.	4.	5.	6.	7.	8.	9.
68.	Tlanghmingthanga	GP	5200- 20200 -2400	6720	1650	8370	21730	17533
69.	Lalremruati	GP	5200- 20200 -2400	6460	1650	8110	20719	16618
70.	T. Biakzama	GP	5200- 20200 -2400	10450	2000	12450	31554	25847
71.	Lalhmunsanga	GP(NPS)	4440- 7440 +1650	4440	1650	6090	16007	14573
72.	Laldingliana	G/Ch(NPS)	4440- 7440 +1650	4440	1650	6090	16007	14573
1.	H. Lalramthanga	SK	5200- 20200 -4200	15330	4200	19530	47896	19434
2.	Promot Kumar	G/Ch	4400- 7440 -2000	10380	2000	12380	31153	22327
3.	Singkamlova	G/Ch	4400- 7440 -2000	6460	1650	8110	21119	16268
4.	Chhimthangpuia	G/P	5200- 2000 -1650	10860	2000	12860	32281	26423
5.	Lalremruati	G/P	5200- 2000 -1650	6460	1650	8110	21119	17018

(iv) District Civil Supply Office, Lawngtlai

SI. No	Name	Designation	Scale of pay	Present pay				
				PB	GP	TOTAL	Gross	Net
1	2	3	5	6	7	8	9	10
1	Spencer Vanlalchhuanga	DCSO	(15600-39100)	23060	5400	23550	66635	33636
2	Laithangpuia	IFCS	(9300-34800)	21710	4600	26310	63829	37707
3	T. Lalduhkima	IFCS	(9300-34800)	20280	4600	24880	60468	37762
4	Lianchhuma Chinzah	IFCS	(9300-34800)	19150	4400	23550	57743	34074
5	C. Vanlalhluna	SIFCS	(9300-34800)	16450	4400	20850	49123	27260
6	J. Lalduhawma	ASA	(9300-34800)	19830	4600	24430	56968	30341
7	C. Roliana	SK	(5200-20200)	12670	2400	15070	37415	37415
8	J.H. Lalrawngbawla	SK	(5200-20200)	15780	4200	19980	46955	25971
9	Rohlua	SK	(5200-20200)	15300	4200	19500	45875	23265
10	TC. Lalsiammawii	SK	(5200-20200)	13500	4200	17700	43595	26089
11	Lalhmingthanga I	SK	(5200-20200)	14210	2400	16610	41034	21878
12	S. Zoramsanga	SK	(5200-20200)	13850	2400	16250	40398	18523
13	Biaksiami	LDC	(5200-20200)	11990	2800	14790	37357	21621
14	T. Zasangi	LDC	(5200-20200)	9820	2400	12220	30717	19985
15	B.K. Rai	S/M	(5200-20200)	13210	2800	16010	39684	30572
16	Laltlana	S/M	(5200-20200)	10770	2000	12770	32070	25245
17	Alpha Omega	G/Ch	(4440-7440)	6000	1650	7650	20038	18217
18	Lalkhawngaiha	G/Ch	(4440-7440)	6000	1650	7650	20038	18217
19	C. Lawmsanga	G/Ch	(4440-7440)	6000	1650	7650	20038	18217
20	Zonunthara	G/Ch	(4440-7440)	9940	1900	11840	29884	22848
21	Vanlalchhuana	G/P	(4440-7440)	8860	1800	10660	27321	19277
22	Hrakhy	G/P	(4440-7440)	9580	1800	11380	28803	22492
23	N. Lalpianmawia	G/P	(4440-7440)	11840	1900	13740	34349	25165
24	Lalmangaihawia	G/P	(4440-7440)	8860	1800	10660	27111	21067
25	A.S. Barbhuiya	G/P	(4440-7440)	9380	1800	11180	28333	18150
26	R.T Sawma	G/P	(5200-20200)	11200	2000	13200	33080	26096

SI. No	Name	Designation	Scale of pay	Present pay				
				PB	GP	TOTAL	Gross	Net
1	2	3	5	6	7	8	9	10
27	Vanhnuaitanga	G/P	(5200-20200)	10970	2000	13200	33080	22641
28	Sungtlingliani	G/P	(5200-20200)	10590	2000	12590	31647	24889
29	Lalmachhuana	G/P	(5200-20200)	10810	2000	12810	32164	25324
30	Lalfela	G/P	(5200-20200)	10770	2000	12770	32070	20245
31	Tumsanga	G/P	(5200-20200)	10970	2000	12970	32540	23641
32	B. Vanlalmazlova	G/P	(5200-20200)	10700	2000	12700	31905	25106
33	R. Vanlalpeka	G/P	(4440-7440)	9230	1800	11030	27981	19800
34	Sangthangpuia Chinzah	G/P	(4440-7440)	9030	1800	10830	27511	18404
35	Vanlaldiki Chinzah	Gr 'D' (MR)		370 daily			11100	11100
36	T. Lalhriatpuia	Gr 'D' (MR)		270 daily			8100	8100
37	H. Lianchungnunga	Gr 'D' (MR)		270 daily			8100	8100
38	Ramdinthara	Gr 'D' (MR)		270 daily			8100	8100
39	Zonunsanga	Gr 'D' (MR)		270 daily			8100	8100
40	Laldinpuia	Gr 'D' (MR)		270 daily			8100	8100
41	C. Lalrinawma	T/A					10000	10000
42	Lalengruali	T/A					10000	10000
43	H. Lalrinmawii	T/A					10000	10000

(v) District Civil Supply Office, Mamit

Sl. No	Name	Designation	Scale of Pay	Present Pay			Gross	Net
				PB	GP	Total		
1.	Pu K.Hlimthanga	DCSO	15600-39100+6600	24260	6600	30860	70935	44164
2.	Pc. Lawmkima	ADCSD	15600-39100+5400	23540	5400	28940	69509	44036
3.	Laldawngzela	ASA	9300-34800+4600	19390	4600	23990	57577	34742
4.	Joseph Vanlalzawma Ralte	ASA	9300-34800+4400	12920	4400	17320	42652	38455
5.	Michael Zothantluanga	LDC	5200-20200+2400	10190	2400	12590	30787	17767
6.	R.Zadingluaia	SIFCS&CA	9300-34800+4400	16380	4400	20780	50033	28525
7.	Pc.Lahmachhuan i	S.K.	5200-20200+2800	14420	2800	17220	41667	26535
8.	Laura Lalthanzuali	LDC	5200-20200+2400	9110	2400	11510	28249	25459
9.	Zonunsanga	LDC	5200-20200+2400	9600	2400	12000	27400	18083
10.	Parmawia	Porter	5200-20200+2000	11630	2000	13630	31928	20097
11.	Lalthankhuma	M.R.Driver	31x370=11470	-	-	-	11470	11470
12.	Malsawmdawngzela	MR	31x270=8370	-	-	-	8370	8370
13.	Lalthanfala	S/M	5200-20200+2400	11360	2400	13760	33596	19347
14.	Pc.Lalremmawia	MR	31x270=8370	-	-	-	8370	8370
15.	Chuauhmingliana	S.K.	5200-20200+4200	15420	4200	19620	47307	30603
16.	Phirhmingthanga	G/CH	4440-7440+1650	6230	1650	7880	19778	17905
17.	Lallawmawma	MR	31x270=8370	-	-	-	8370	8370

Sl. No	Name	Designation	Scale of Pay	Present Pay			Gross	Net
				PB	GP	TOTAL		
18	Lallianpuia	MR	31x270 =8370	-	-	-	8370	8370
19	J.C.Vanlalhriata	S.K	5200- 20200+ 4200	15550	4200	19750	47613	29508
20	Bidhu Nath	Porter	5200- 20200+ 1900	9860	1900	11760	28896	17623
21	Lalchhandama	MR	31x270 =8370	-	-	-	8370	8370
22	Lalthlengliana	SIFCS&CA	9300- 34800+ 4400	16380	4400	20780	50033	23525
23	Zoramnunthara	SM	5200- 20200+ 2000	11630	2000	13630	33291	21560
24	Lalnunsanga	G/CH	5200- 20200+ 2000	10590	2000	12590	30847	19927
25	A.I.Laskar	Porter	4440- 7440+1 650	6720	1650	8370	20093	11364
26	Lalhmingthanga	S.K	5200- 20200+ 2800	13950	2800	16750	40563	25298
27	Lalmuana	SM	4440- 7440+ 1650	5340	1650	6990	17687	16014
28	Laltlankima	MR	31x270 =8370	-	-	-	8370	8370
29	Lalsangzuala	S.K.	5200- 20200+ 2800	11150	2800	13950	32588	18880
30	Lalbiakzama	Porter	5200- 20200+ 1800	9230	1800	11030	27181	17478
31	Zomuankima	Porter	4440- 7440+ 1650	5550	1650	7200	18180	16460
32	C.Lalngaihawma	MR	31x270 =8370	-	-	-	8370	8370
33	P.Lalroenga	S.K.	5200- 20200+ 4200	9110	2400	11510	28249	25459
34	Ajoy Kumar Dey	Porter	5200- 20200+ 1900	9750	1900	11650	28638	17451

Sl No.	Name	Designation	Scale of Pay	Present Pay			Gross	Net
				PB	GP	Total		
35	Lalnunsanga	MR	31x270 =8370	-	-	-	8370	8370
36	R.Rotluanga	S.K.	5200- 20200+ 4200	15500	4200	19700	47495	30729
37	Laldinmawia	MR	31x270 =8370	-	-	-	8370	8370
38	Lalnunhlana	G/CH	5200- 20200+ 2000	10370	2000	12370	30330	18581
39	Hrangthangvela	SIFCS&CA	9300- 34800+ 4200	15550	4200	19750	47613	26908
40	Dohmingthanga	Porter	5200- 20200+ 2000	10970	2000	12970	31740	20523
41	Laltlanzova	MR	31x270 =8370	-	-	-	8370	8370
42	C.Lalrinliana	MR	31x270 =8370	-	-	-	8370	8370
43	J.Malsawmthanga	S.K.	5200- 20200+ 2800	10580	2800	13380	32643	19447
44	C.Sangkhuma	Porter	4440- 7440+ 1650	6720	1650	8370	20930	12301
45	Rozamlia	Porter	4440- 7440+ 1650	6720	1650	8370	20930	11301
46	Lalfakawma Ralte	S.K.	5200- 20200+ 4200	15550	4200	19750	45638	28733
47	Boloram Shah	Porter	5200- 20200+ 2400	11820	2400	14220	34677	22485
48	K.I.Laskar	Porter	5200- 20200+ 1800	9390	1800	11190	27557	16729
49	Zoramthangi	G/CH	4440- 7440+ 1800	9230	1800	11030	27181	17478
50	Vanlalnghaka	G/CH	5200- 20200+ 2000	11630	2000	13630	33291	21560

(vi) Mizoram House, Guwahati

Sl. No	Name	Designation	Scale of Pay	Present Pay			Gross	Net
				PB	GP	Total		
1.	Lalzidingi	Assistant	9300-34800+4400	18090	4400	22490	48224	25981
2.	Bhoben Roy	Cook	4440+7440+2400	11400	2400	13800	32474	27096
3.	Mahesh Nath	Room Bearer	4440+7440+2400	11100	2400	13500	29075	22540
4.	Tilak Barman	Sweeper	4440+7440+1900	9590	1900	11490	27092	22430

PART - IX
DEMAND NO- 17
FOOD, CIVIL SUPPLIES AND CONSUMERS' AFFAIRS
Abstract Schedule for Object Headwise Expenditure

(Rupees in lakh)

Actuals 2013-14			Budget Estimates 2014-15			Revised Estimates 2014-15			Head of Account	Budget Estimates 2015-16			
Non Plan	Plan	CSS	Non Plan	Plan	Others	Non Plan	Plan	Others		Non Plan	Plan	Others	Total
2958.57	113.67		4636.35	117.09		4636.35	117.09		(01) – Salaries	4342.09	125.37		4467.46
114.86	14.12	4.97	132.54	16.22		132.54	16.22	71.28	(02) – Wages	132.54	16.41	71.91	220.86
									(04) – Pensionary Charges				
216.62	9.05		92.50	7.00		209.70	7.00		(06) – Medical Treatment	100.71	5.00		105.71
18.88	8.67		21.00	6.23		21.00	6.23		(11) – Domestic Travel Expenses	21.00	3.76		24.76
									(12) – Forehn Travel Expenses				
22.85	28.21	26.37	22.80	21.00		22.80	21.00	204.17	(13) – Office Expenses	22.80	16.49	140.94	180.23
8.71	2.19		13.75	3.00		13.75	3.00		(14) – Rents, Rates & Taxes	13.75	2.00		15.75
									(16) – Publications				
									(20) – Other Administrative Expenses				
11437.42	12.50		17828.10	7.10		27537.05	7.10		(21) – Supplies and Materials	17828.10	5.00		17833.10
									(24) – POL				
0.99	1.82		1.00	1.10						1.00			1.00
13.00	22.03	1.00	1.00		(26) – Advertising and Publicity					13.00	55.00		68.00
		13.00	23.16		(27) – Minor Works			37.88	(28) – Professional Services			54.45	54.45
									(31) – Grants in aid - General (Salary)				
1.50			1.50			1.50		20.00	(32) – Grants in aid – General (Non-Salary)	1.50		20.00	21.50
									(33) – Subsidies				
									(34) – Scholarships/Stipend				
									(35) – Grants for Creation of Capital Assets				
									(41) – Secret Service Expenditure				
									(43) – Suspenses				
									(45) – Interest				
4260.30	47.76	31.87	2001.50	48.67		3397.50	48.67	384.94	(50) – Other Charges	2001.50	35.10	179.43	2216.03
0.45	47.43		0.45	20.53		0.45	20.53		(51) – Motor Vehicles	0.45			0.45
1.00			1.00			1.00			(52) – Machinery and Equipment	1.00			1.00
				1500.00			1500.00		(53) – Major Works		2759.00	200.00	2959.00
									(54) – Investment				
									(55) – Loans & Advances				
									(56) – Repayment of Borrowing				
									(64) – Write off				
19055.15	307.45	127.84	24765.49	1771.00		35987.64	1771.00	718.27	TOTAL OF DEMAND NO. 17 (VOTED)	24479.44	3023.13	666.73	28169.30
14486.31			17826.60			18000.00			Deduct recoveries	17826.60			17826.60
									Works transferred to P.W.D			200.00	200.00
4568.84	307.45	127.84	6938.89	1771.00		17987.64	1771.00	718.27	NET TOTAL OF DEMAND NO. 17	6652.84	3023.13	466.73	10142.70

PART – X

The names of DAA, SPIO and SAPIO with contact number.

Sl. No	Name	Designation	Contact Number	Designation as per RTI Act '05
1	Abhijit Vijay Choudhuri	Director	8956844125	Appelate Authority in respect of Directorate of Food, Civil Supplies & Consumer Affairs Department.
2	H.C. Zonunthara	DD(Admin.)	9436152482	State Public Information Officer
3	V.L. Biakhnuna	Suptd. (Admn.)	9436152883	State Asst. Public Information Officer, Directorate.
4	Lalkunga Sailo	DCSO 'W'	9862214248	State Asst. Public Information Officer, Aizawl West
5	Malsawmtluanga	DCSO 'E'	9862689748	State Asst. Public Information Officer, Aizawl East
6	H. Lalrinpuia	DCSO , Lunglei	9436597898	State Asst. Public Information Officer, Lunglei
7	C. Zadailova	DCSO, Saiha	8974777999	State Asst. Public Information Officer, Saiha
8	Lalthanmawia	DCSO, Champhai	9436159263	State Asst. Public Information Officer, Champhai
9	Spencer Vanlalchhhuanga	DCSO, Lawngtlai	9436147492	State Asst. Public Information Officer, Lawngtlai
10	Biakthansanga Sailo	DCSO, Kolasib	9436156125	State Asst. Public Information Officer, Kolasib
11	Rosangmawia	DCSO, Serchhip	9436158549	State Asst. Public Information Officer, Serchhip
12	Pu K.Hlimthanga	DCSO, Mamit	9863362883/ 7085417350	State Asst. Public Information Officer, Mamit